



Appendix I: Additional Information by Analysis District

Asheville

In the three-county Asheville analysis district, there are four transit providers. Of these, three agencies operate a fixed route system: Asheville Redefines Transit (ART), Apple Country Public Transit, and Mountain Mobility (Buncombe County). Overall, ART provided the most fixed route passenger trips in 2015, with nearly 1.5 million passenger trips served. Transfer points between the systems allow for travel between the fixed route systems in rural Buncombe County and Henderson County into the City of Asheville, and vice versa.

These fixed route services are complemented by federally-mandated complimentary paratransit service within a ¾ mile zone around fixed route services in Buncombe and Henderson counties, as well as by additional services for eligible residents of these counties. For example, Haywood Public Transit provides connections to the Mountain Mobility Enka-Candler Trailblazer route and demand response service for medical appointments in Sylva (Jackson County). However, both Haywood Public Transit and Apple Country Public Transit report that Asheville is the primary destination for any out-of-county travel. Of demand response services, Buncombe County served the most trips in 2015 (136,910 passenger trips).

The following sections, tables, and maps summarize transit services and major destinations in the Asheville analysis district.

Existing Service Information

Table A-1: Selected National Transit Database (NTD) Statistics for Asheville Analysis District Providers, 2015

Provider	Service Area Population	Mode	Ridership ¹		Revenue Hours		Revenue Miles
			Total	Per Capita	Total	Per Capita	Total
Apple Country Public Transit	109,719	Demand Response	3,280	0.03	1,309	0.01	23,682
		Fixed Route	107,331	0.98	8,964	0.08	169,256
Asheville Redefines Transit (ART)	86,789	Fixed Route	1,458,306	16.80	64,345	0.74	949,550
Haywood Public Transit	59,170	Demand Response	39,992	0.68	14,864	0.25	283,820
Mountain Mobility	247,336	Demand Response	136,910	0.55	56,089	0.23	1,079,909
		Fixed Route	28,472	0.12	7,407	0.03	138,739

Sources: Population: American Community Survey, 2011-2015, 5-Year Estimates. Transit Service Data: National Transit Database, Service table, 2015.

¹ Ridership figures are in terms of unlinked passenger trips.



Table A-2: Service Information for Demand Response Providers in the Asheville Analysis District, 2017

Provider	Service Area	Eligibility	Other Available Services
Apple Country Public Transit	In-County - Within ¾ Mile of Fixed Routes	Disabled residents only	Henderson County DSS Medicaid Transportation Services
	In-County – Other Henderson County areas	All residents	
	Out-of-County - Asheville	Medical appointments, elderly, and disabled residents	
Haywood Public Transit	In-County	All residents	
	Out-of-County – Asheville, Buncombe County, Sylva	Medical appointments, elderly, and disabled residents	
Mountain Mobility	In-County – Within ¾ Mile of Fixed Routes	Disabled residents only	
	In-County – Buncombe County Outside of Asheville	All residents	Additional out-of-county Medicaid services coordinated through Land-of-Sky Transportation Resources

Sources: Provider websites, Coordinated Transportation Plans, interviews with provider representatives.

Table A-3: Service Information for Fixed-Route Providers in the Asheville Analysis District, 2017

Provider	Fixed-Routes	Deviated Fixed-Routes
Apple Country Public Transit	3	1
Asheville Redefines Transit	18	0
Mountain Mobility	0	3

Sources: Provider websites and interviews with provider representatives.



Major Destinations

Table A-4: Degree Granting Junior Colleges, Colleges, Universities and Professional Schools in Asheville Analysis District, 2016

Name	City	County	Type	Total Enrolled	Total Employed
Asheville-Buncombe Technical Community College	Asheville	Buncombe	Junior College	8,009	1,011
Daoist Traditions College of Chinese Medical Arts	Asheville	Buncombe	College	77	43
Montreat College	Montreat	Buncombe	College	827	141
South College-Asheville	Asheville	Buncombe	Junior College	257	64
University of North Carolina at Asheville	Asheville	Buncombe	University	3,751	706
Warren Wilson College	Swannanoa	Buncombe	College	924	258
Haywood Community College	Clyde	Haywood	Junior College	2,226	1,320
Blue Ridge Community College	Flat Rock	Henderson	Junior College	2,270	410

Source: National Center for Education Statistics, via Department of Homeland Security Homeland Infrastructure Foundation-Level Data.

Table A-5: Hospitals in Asheville Analysis District, 2017

Name	City	County	Beds
Asheville Specialty Hospital	Asheville	Buncombe	34
Carepartners Rehabilitation Hospital	Asheville	Buncombe	80
Charles George VA Medical Center	Asheville	Buncombe	N/A
Memorial Mission Hospital and Asheville Surgery Center	Asheville	Buncombe	763
Medwest – Haywood	Clyde	Haywood	190
Margaret R. Pardee Memorial Hospital	Hendersonville	Henderson	222
Park Ridge Hospital	Hendersonville	Henderson	103

Source: Department of Homeland Security Homeland Infrastructure Foundation-Level Data portal.

Table A-6: Correctional Facilities in Asheville Analysis District, 2017

Name	Facility Type	City	County	Population
Craggy Correctional Center	State	Asheville	Buncombe	582
Swannanoa Correctional Center for Women	State	Swannanoa	Buncombe	337

Source: Department of Homeland Security Homeland Infrastructure Foundation-Level Data portal.



Table A-7: County Seats in Asheville Analysis District

County Seat	County
Asheville	Buncombe
Hendersonville	Henderson
Waynesville	Haywood

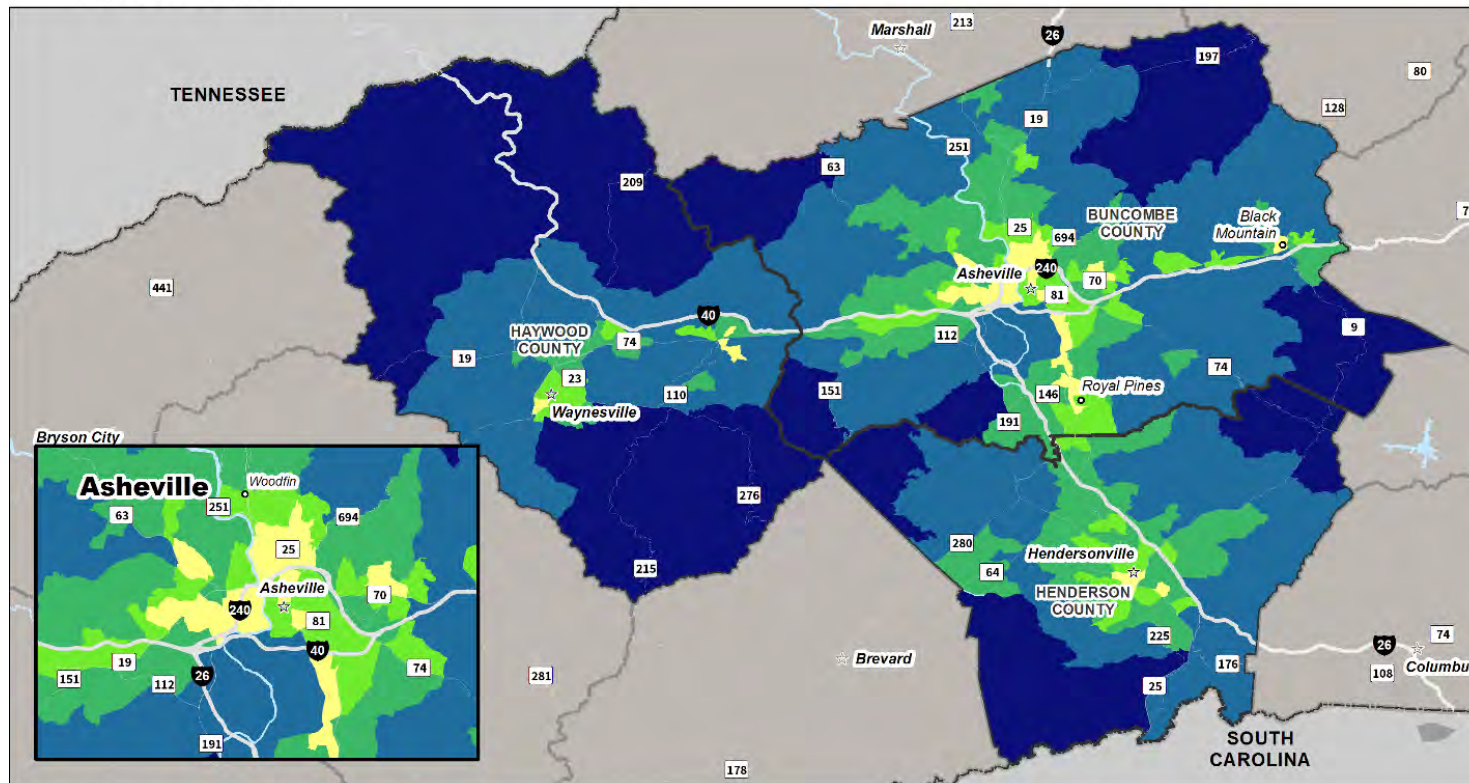
Table A-8: Social Security Offices in Asheville Analysis District

Location	County
Asheville	Buncombe
Hendersonville	Henderson

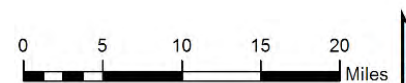


Figure A-1: Map of Population Density of Asheville Analysis District, American Community Survey, 2015

Asheville
Population Density



Population per Square Mile





Charlotte

The twelve providers in the Charlotte analysis district operate a range of transit options. Charlotte Area Transit System (CATS) provides fixed-route bus, express bus, vanpool, paratransit, and light rail to Charlotte and neighboring areas. The cities of Gastonia, Salisbury, Concord, and Kannapolis provide fixed-route bus service within their cities, and provide connections to CATS and Amtrak.

Mecklenburg Transportation System (MTS) provides demand response taxi service, which connects residents to the closest CATS bus stop. In 2015, MTS provided almost 270,000 trips via demand response taxi, or 1.67 trips per capita. This service may be replicable in other analysis districts for counties that are near urban centers.

Seven providers in the Charlotte analysis district provide demand response service that does not act as paratransit for a fixed-route system. In 2015, these seven systems provided on average 0.51 trips per capita. SCUSA Transportation in Stanly County provided the largest number of trips per capita (0.79).

The following sections, tables, and maps summarize transit services and major destinations in the Charlotte analysis district.

Existing Service Information



Table A-9: Selected NTD Statistics for Charlotte Analysis District Providers, 2015

Provider	Service Area Population	Mode	Ridership ²		Revenue Hours		Revenue Miles
			Total	Per Capita	Total	Per Capita	Total
Cabarrus County Transportation Services	188,375	Demand Response	86,926	0.46	31,857	0.17	639,457
Charlotte Area Transit System (CATS)	2,338,792	Fixed-Route Bus	20,574,218	8.80	778,994	0.33	10,391,250
		Vanpool	240,310	0.10	36,259	0.02	1,889,272
		Demand Response	252,690	0.11	137,706	0.06	2,449,001
		Commuter Bus	1,080,304	0.46	52,877	0.02	1,186,408
		Light Rail	5,018,421	2.15	66,612	0.03	1,018,935
City of Salisbury	33,653	Fixed-Route Bus	161,048	4.79	10,049	0.3	115,613
Concord Kannapolis Area Transit	128,423	Fixed-Route Bus	472,561	3.68	35,336	0.28	634,188
Gaston County ACCESS Central Transportation	209,807	Demand Response	124,128	0.59	26,800	0.13	498,170
		Fixed-Route Bus	9,842	0.05	1,734	0.01	37,497
Gastonia Transit	73,211	Fixed-Route Bus	278,998	3.81	20,838	0.28	287,552
		Demand Response	8,102	0.11	1,809	0.02	73,126
Iredell County Area Transportation Services (ICATS)	165,066	Demand Response	75,307	0.46	43,012	0.26	694,840
		Fixed-Route Bus	7,202	0.04	5,566	0.03	90,304
Mecklenburg Transportation System	160,733	Demand Response	70,967	0.44	31,103	0.19	501,273
		Demand Response Taxi	269,134	1.67	124,412	0.77	1,984,360

² Ridership figures are in terms of unlinked passenger trips.



Provider	Service Area Population	Mode	Ridership ²		Revenue Hours		Revenue Miles
			Total	Per Capita	Total	Per Capita	Total
Rowan Transit System	138,361	Demand Response	68,467	0.49	29,673	0.21	555,151
		Fixed-Route Bus	21,279	0.15	6,130	0.04	98,852
SCUSA Transportation	60,586	Demand Response	48,074	0.79	18,114	0.3	311,083
Transportation Lincoln County (TLC)	79,578	Demand Response	38,816	0.49	30,074	0.38	496,433
		Fixed-Route Bus	25,392	0.32	2,306	0.03	24,693
Union County Transportation	213,422	Demand Response (Directly Operated)	77,690	0.36	37,927	0.18	629,346
		Demand Response (Purchased)	48	0	66	0	1,393

Sources: Population: American Community Survey, 2011-2015, 5-Year Estimates. Transit Service Data: National Transit Database, Service table, 2015.

Table A-10: Service Information for Demand Response Providers in the Charlotte Analysis District, 2017

Provider	Service Area	Eligibility	Other Available Services
Cabarrus County Transportation Services (CCTS)	In-county	All residents	Human Services; Adult and Aging Services
	Out-of-county – destinations unknown	DSS Medicaid clients with pre-approved appointments	
CATS Special Transportation Service	Charlotte, Matthews, and Pineville	Certified disabled residents	
CATS Special Transportation Service II	Cornelius, Davidson, Huntersville, Mint Hill and the unincorporated areas of Mecklenburg County	Certified disabled residents	
City of Salisbury	Within service area of fixed route bus (Salisbury, Spencer, East Spencer)	Certified disabled residents	
Concord Kannapolis Area Transit	Destinations within 3/4 miles from fixed-routes	Certified disabled residents	
Gaston County ACCESS Central Transportation	In-county	All residents	



Provider	Service Area	Eligibility	Other Available Services
	Out-of-county – Charlotte, Salisbury	DSS Medicaid clients with pre-approved appointments, Veterans	
Gastonia Transit	City of Gastonia	Certified disabled residents	
Iredell County Area Transportation System (ICATS)	In-county	Disabled residents, senior citizens	DSS provides services for Medicaid clients
Mecklenburg Transportation System (MTS)	In-county - Origin or destination of the trip in the non-urbanized area of Mecklenburg County. Door to door service is provided or passengers may choose to be taken from the non-urbanized location to a local CATS bus stop location.	All residents	
	Out-of-county - approved destinations, including VA hospitals in NC	Medicaid clients, disabled residents, senior citizen, veterans	
Rowan Transit System	In-County	All residents	
SCUSA Transportation	In-County	All residents	Older Adult Services in Stanly (OASIS)
	Out-of-County - Charlotte, Concord, Monroe, Pinehurst, Salisbury	Medical appointments	
Transportation Lincoln County (TLC)	In-county	All residents	
	Out-of-county - Charlotte, Gastonia, Hickory, Huntersville, Mooresville	All residents, but primarily medical appointments trips	
Union County Transportation	In-County	Medicaid clients, disabled residents, senior citizens, veterans	
	Out-of-county - Charlotte, Durham, Matthews, Pineville, Salisbury, Winston-Salem	Medicaid clients, disabled residents, senior citizens, veterans	

Sources: Provider websites, Coordinated Transportation Plans, interviews with provider representatives.



Table A-11: Service Information for Fixed-Route Bus Providers in the Charlotte Analysis District, 2017

Provider	Fixed-Routes	Deviated Fixed-Routes
Charlotte Area Transit System (CATS)	72	0
City of Salisbury	5	0
Concord Kannapolis Area Transit	7	0
Gaston County	0	1
Gastonia Transit	7	0
Iredell County Area Transportation System (ICATS)	2	2

Sources: Provider websites and interviews with provider representatives.

Table A-12: Service Information for Rail Providers in the Charlotte Analysis District, 2017

Provider	Rail Lines
Charlotte Area Transit System (CATS)	2

Source: Provider website.



Major Destinations

Table A-13: Degree Granting Junior Colleges, Universities and Professional Schools in the Charlotte Analysis District, 2016

Name	City	County	Type	Total Enrolled	Total Employed
Cabarrus College of Health Sciences	Concord	Cabarrus	College	484	88
Gaston College	Dallas	Gaston	Junior College	6,002	871
Belmont Abbey College	Belmont	Gaston	College	1,706	331
Mitchell Community College	Statesville	Iredell	Junior College	3,439	518
University of North Carolina At Charlotte	Charlotte	Mecklenburg	University	26,232	3,697
Charlotte School of Law	Charlotte	Mecklenburg	Professional School	1,392	171
ITT Technical Institute - Charlotte North	Charlotte	Mecklenburg	Junior College	435	58
Davidson College	Davidson	Mecklenburg	College	1,791	840
Johnson C. Smith University	Charlotte	Mecklenburg	University	1,669	414
King's College	Charlotte	Mecklenburg	Junior College	502	96
Devry University's Keller Graduate School of Management-North Carolina	Charlotte	Mecklenburg	Professional School	400	N/A
Kaplan College-Charlotte	Charlotte	Mecklenburg	Junior College	380	50
Devry University-North Carolina	Charlotte	Mecklenburg	University	737	132
Devry University-North Carolina	Charlotte	Mecklenburg	University	760	126
Carolinas College of Health Sciences	Charlotte	Mecklenburg	Junior College	445	79
University of Phoenix-Charlotte Campus	Charlotte	Mecklenburg	University	995	159
Johnson & Wales University-Charlotte	Charlotte	Mecklenburg	University	2,401	251
ITT Technical Institute-Charlotte South	Charlotte	Mecklenburg	Junior College	517	76
New Life Theological Seminary	Charlotte	Mecklenburg	Professional School	145	44
Queens University of Charlotte	Charlotte	Mecklenburg	University	2,386	520
The Art Institute of Charlotte	Charlotte	Mecklenburg	Professional School	1,253	160
Central Piedmont Community College	Charlotte	Mecklenburg	Junior College	17,850	2,560
Catawba College	Salisbury	Rowan	College	1,293	271
Livingstone College	Salisbury	Rowan	College	1,111	233



Name	City	County	Type	Total Enrolled	Total Employed
Hood Theological Seminary	Salisbury	Rowan	Professional School	209	45
Rowan-Cabarrus Community College	Salisbury	Rowan	Junior College	7,379	1,005
Stanly Community College	Albemarle	Stanly	Junior College	2,989	469
Pfeiffer University	Misenheimer	Stanly	University	2,046	261
Wingate University	Wingate	Union	University	2,648	500

Source: National Center for Education Statistics, via Department of Homeland Security Homeland Infrastructure Foundation-Level Data portal.

Table A-14: Hospitals in the Charlotte Analysis District, 2017

Name	City	County	Beds
Carolinas Healthcare System Northeast	Concord	Cabarrus	457
Caromont Regional Medical Center	Gastonia	Gaston	435
Carolinas Rehabilitation - Mount Holly	Belmont	Gaston	40
Davis Regional Medical Center	Statesville	Iredell	149
Iredell Memorial Hospital	Statesville	Iredell	247
Lake Norman Regional Medical Center	Mooresville	Iredell	105
Carolinas Medical Center-Lincoln	Lincolnton	Lincoln	101
Carolinas Healthcare System Northeast	Concord	Cabarrus	457
Caromont Regional Medical Center	Gastonia	Gaston	435
Carolinas Rehabilitation - Mount Holly	Belmont	Gaston	40
Davis Regional Medical Center	Statesville	Iredell	149
Iredell Memorial Hospital	Statesville	Iredell	247
Lake Norman Regional Medical Center	Mooresville	Iredell	105
Carolinas Medical Center-Lincoln	Lincolnton	Lincoln	101
Carolinas Medical Center	Charlotte	Mecklenburg	1,132
Carolinas Rehabilitation	Charlotte	Mecklenburg	70
Novant Health Huntersville Medical Center	Huntersville	Mecklenburg	91
Carolinas Medical Center-Pineville	Charlotte	Mecklenburg	206
Novant Health Presbyterian Medical Center	Charlotte	Mecklenburg	661



Name	City	County	Beds
Novant Health Matthews Medical Center	Matthews	Mecklenburg	146
Carolinas Medical Center-Mercy	Charlotte	Mecklenburg	305
Carolinas Medical Center-University	Charlotte	Mecklenburg	100
Novant Hospital Charlotte Orthopedic Hospital	Charlotte	Mecklenburg	80
W. G. (Bill) Hefner VA Medical Center	Salisbury	Rowan	N/A
Novant Health Rowan Medical Center	Salisbury	Rowan	268
Stanly Regional Medical Center	Albemarle	Stanly	109
Carolinas Medical Center-Union	Monroe	Union	227

Source: Department of Homeland Security Homeland Infrastructure Foundation-Level Data portal.

Table A-15: Correctional Facilities in the Charlotte Analysis District, 2017

Name	Facility Type	City	County	Population
Stonewall Jackson Youth Development Center	State	Concord	Cabarrus	N/A
Gaston Correctional Center	State	Dallas	Gaston	239
Gaston Regional Juvenile Detention Center	State	Dallas	Gaston	N/A
Lincoln Correctional Center	State	Lincolnton	Lincoln	227
Piedmont Correctional Institution	State	Salisbury	Rowan	992
Piedmont Correctional Institution-Minimum Sec Unit	State	Salisbury	Rowan	N/A
Albemarle Correctional Institution	State	New London	Stanly	849

Source: Department of Homeland Security Homeland Infrastructure Foundation-Level Data portal



Table A-16: County Seats in the Charlotte Analysis District

County Seat	County
Albemarle	Stanly
Charlotte	Mecklenburg
Concord	Cabarrus
Gastonia	Gaston
Lincolnton	Lincoln
Monroe	Union
Salisbury	Rowan
Statesville	Iredell

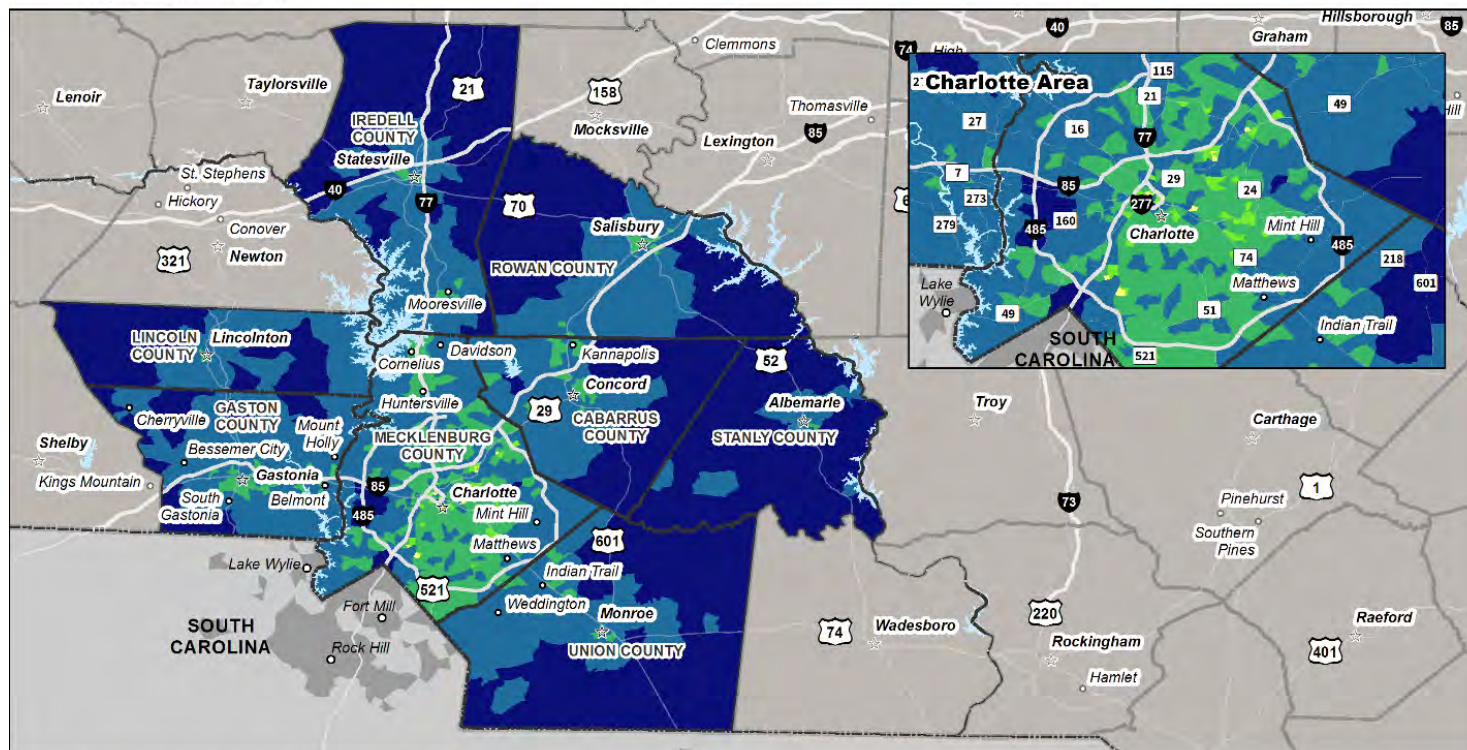
Table A-17: Social Security Offices in the Charlotte Analysis District

City	County
Albemarle	Stanly
Charlotte	Mecklenburg
Concord	Cabarrus
Gastonia	Gaston
Salisbury	Rowan
Statesville	Iredell

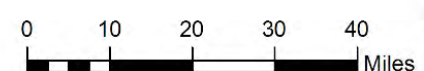
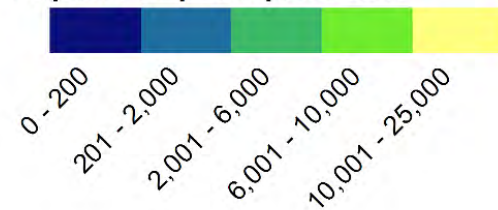


Figure A-2: Map of Population Density of Charlotte Analysis District, American Community Survey, 2015

Charlotte Population Density



Population per Square Mile





Eastern Northern

The providers in the Eastern-Northern analysis district exclusively provide demand response transit service. Two providers, Choanoke Public Transportation Authority (CPTA) and Inter-County Public Transportation Authority (ICPTA), provide demand response transit to multiple counties. For that reason, CPTA and ICPTA provided the highest number of trips in the Eastern-Northern analysis district in 2015, with about 92,000 and 97,000 trips, respectively. Gates County Inter-Regional Transportation System and Hyde County Transit both delivered over two rides for each resident in their service area despite their smaller populations in comparison to other providers in the region (about 12,000 and 6,000, respectively).

Every provider in the Eastern-Northern analysis district provides trips to Greenville, which has a veterans' hospital, other medical facilities, East Carolina University, shopping, and entertainment. As demand for service to Greenville is strongest, coordinating service among multiple providers traveling to Greenville may be feasible.

The following sections, tables, and maps summarize transit services and major destinations in the Eastern-Northern analysis district.



Existing Service Information

Table A-18: Selected NTD Statistics for Eastern-Northern Analysis District Providers, 2015

Provider	Service Area Population	Mode	Ridership ³		Revenue Hours		Revenue Miles Total
			Total	Per Capita	Total	Per Capita	
Beaufort Area Transit System (BATS)	47,561	Demand Response	38,987	0.82	29,994	0.63	330,991
Choanoke Public Transportation Authority (CPTA)	119,304	Demand Response	91,750	0.77	38,250	0.32	826,199
Dare County Transportation System	34,863	Demand Response	19,816	0.57	16,224	0.47	284,806
		Demand Response Taxi	2	0.00	6	0.00	192
Gates County Inter-Regional Transportation System	11,724	Demand Response	25,016	2.13	12,864	1.10	321,005
Hyde County Transit	5,693	Demand Response	13,309	2.34	3,955	0.69	103,565
Inter-County Public Transportation Authority (ICPTA)	102,825	Demand Response	96,626	0.94	46,833	0.46	869,313
Martin County Transit (MCT)	23,729	Demand Response	28,151	1.19	14,939	0.63	248,924
Riverlight Transit	12,668	Demand Response	16,267	1.28	6,032	0.48	143,422
Tyrrell County Senior and Disabled Transportation System	4,152	Does not report to the National Transit Database					

Sources: Population: American Community Survey, 2011-2015 5-Year Estimates. Transit Service Data: National Transit Database, Service table, 2015. All transit providers listed reported data to the NTD, except Tyrrell County Senior and Disabled Transportation System.

Table A-19: Service Information for Demand Response Providers in the Eastern-Northern Analysis District, 2017

Provider	Service Area	Eligibility
Beaufort Area Transit System (BATS)	In-County	All residents
	Out-of-County - Chapel Hill, Durham, Greenville, New Bern	All residents
	In-Area	All residents

³ Ridership figures are in terms of unlinked passenger trips.



Provider	Service Area	Eligibility
Choanoke Public Transportation Authority	Out-of-Area – Rocky Mount, Greenville	All residents
Dare County Transportation System	In-County	All residents and visitors
	Out-of-County - Chapel Hill, Durham, Elizabeth City, Greenville, Chesapeake, Norfolk, Virginia Beach, Veterans' Hospital in Hampton	All residents and visitors
Gates County Inter-Regional Transportation System	In-County	All residents
	Out-of-County - Greenville, Ahoskie, Elizabeth City, Edenton, Duke University Hospital, Suffolk, Smithfield, Norfolk, Hampton	All residents
Hyde County Transit	In-County	All residents
	Out-of-County - Belhaven, Plymouth, Washington, and Greenville	All residents
Inter-County Public Transportation Authority (ICPTA)	In-Area	All residents
	Out-of-Area - Virginia, Greenville	Medical appointments
Martin County Transit (MCT)	In-County	All residents
	Out-of-County - Ahoskie, Belhaven, Bethel, Chapel Hill, Duke, Durham, Edenton, Greenville, Plymouth, Raleigh, Tarboro, Washington, Windsor, Wilson	All residents
Riverlight Transit	In-County	All residents
	Out-of-County - Williamston, Edenton, Elizabeth City, Greenville, Washington, Chapel Hill, Durham	All residents
Tyrrell County Senior and Disabled Transportation System	In-County	Senior and disabled residents
	Out-of-County - Edenton, Elizabeth City, Plymouth, Williamston, Washington, Greenville, Raleigh/Durham, Manteo, Nags Head, and Chesapeake	Senior and disabled residents

Sources: Provider websites, Coordinated Transportation Plans, interviews with provider representatives



Major Destinations

Table A-20: Degree Granting Junior Colleges, Colleges, Universities and Professional Schools in the Eastern-Northern Analysis District, 2016

Name	City	County	Type	Total Enrolled	Total Employed
Beaufort County Community College	Washington	Beaufort	Junior College	1,910	337
Halifax Community College	Weldon	Halifax	Junior College	1,510	324
Chowan University	Murfreesboro	Hertford	University	1,316	249
Roanoke-Chowan Community College	Ahoskie	Hertford	Junior College	898	200
Martin Community College	Williamston	Martin	Junior College	786	85
College of The Albemarle	Elizabeth City	Pasquotank	Junior College	2,607	464
Elizabeth City State University	Elizabeth City	Pasquotank	University	2,930	609
Mid-Atlantic Christian University	Elizabeth City	Pasquotank	University	164	34

Source: National Center for Education Statistics, via Department of Homeland Security Homeland Infrastructure Foundation-Level Data.

Table A-21: Hospitals in the Eastern-Northern Analysis District, 2017

Name	City	County	Beds
Vidant Beaufort Hospital	Washington	Beaufort	142
Vidant Bertie Hospital	Windsor	Bertie	N/A
Vidant Chowan Hospital	Edenton	Chowan	89
The Outer Banks Hospital	Nags Head	Dare	21
Halifax Regional Medical Center	Roanoke Rapids	Halifax	206
Our Community Hospital	Scotland Neck	Halifax	100
Vidant Roanoke-Chowan Hospital	Ahoskie	Hertford	114
Martin General Hospital	Williamston	Martin	49
Sentara Albemarle Medical Center	Elizabeth City	Pasquotank	182
Washington County Hospital	Plymouth	Washington	49



Source: Department of Homeland Security Homeland Infrastructure Foundation-Level Data portal.

Table A-22: Correctional Facilities in the Eastern-Northern Analysis District, 2017

Name	Facility Type	City	County	Population
Bertie Correctional Institution	State	Windsor	Bertie	1,126
Caledonia Correctional Institution	State	Tillery	Halifax	912
Tillery Correctional Center	State	Tillery	Halifax	500
Ci Rivers	Federal	Winton	Hertford	1,328
Hyde Correctional Institution	State	Fairfield	Hyde	646
Odom Correctional Institution	State	Jackson	Northampton	502
Pasquotank C.I. Minimum Security Unit	State	Elizabeth City	Pasquotank	N/A
Pasquotank Correctional Institution	State	Elizabeth City	Pasquotank	805
Tyrrell Prison Work Farm	State	Columbia	Tyrrell	438

Source: Department of Homeland Security Homeland Infrastructure Foundation-Level Data portal.



Table A-23: County Seats in the Eastern-Northern Analysis District

County Seat	County
Camden	Camden
Columbia	Tyrrell
Currituck	Currituck
Edenton	Chowan
Elizabeth City	Pasquotank
Gatesville	Gates
Halifax	Halifax
Hertford	Perquimans
Jackson	Northampton
Manteo	Dare
Plymouth	Washington
Swan Quarter	Hyde
Washington	Beaufort
Williamston	Martin
Windsor	Bertie
Winton	Hertford

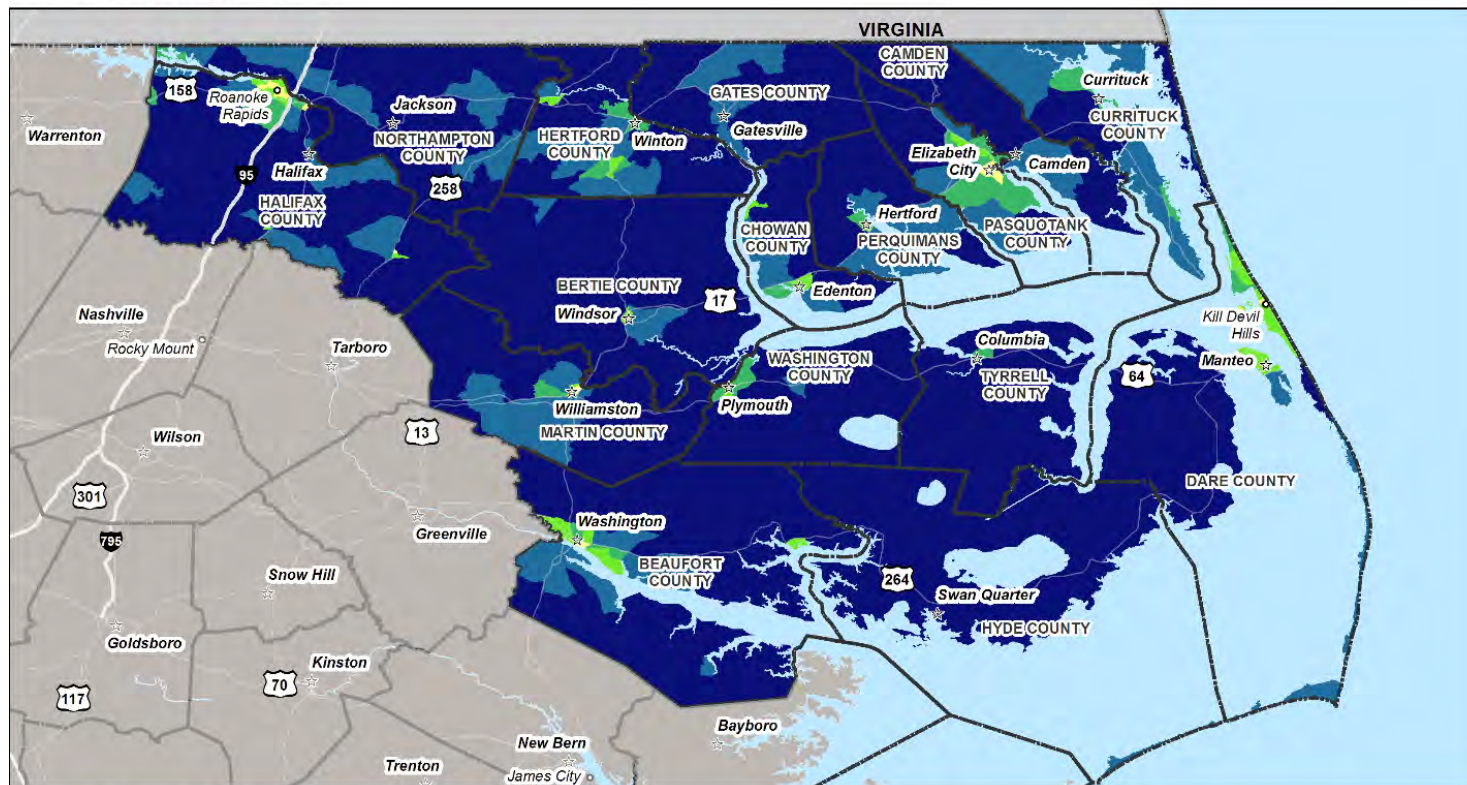
Table A-24: Social Security Offices in the Eastern-Northern Analysis District

Location	County
Ahoskie	Hertford
Elizabeth City	Pasquotank
Roanoke Rapids	Halifax
Washington	Beaufort

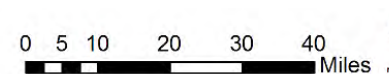
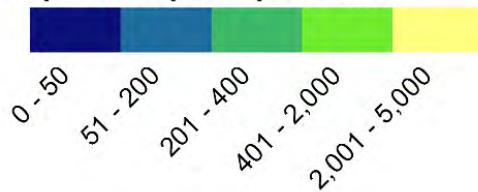


Figure A-3: Map of Population Density in Eastern-Northern Analysis District, American Community Survey, 2015

Eastern-Northern Population Density



Population per Square Mile





Eastern-South

Demand response transit service is provided by county governments in all five counties that comprise the Eastern-South analysis district. Out-of-county trips in this analysis district are typically to Fayetteville, Wilmington, and Durham. For four out of five providers, out-of-county trips are only for medical or Veterans Affairs hospital and services trips. Duplin County Transportation Department is the only provider that allows out-of-county trips for all purposes.

In 2015, Bladen Area Rural Transportation System (BARTS) provided the highest number of trips per resident (0.81) and over 28,000 trips, while the South East Area Transit System (SEATS) provided the lowest number of trips per resident (0.40), but the highest number of trips (over 54,000). A relatively small percentage of trips in this analysis district are funded through Medicaid. Medicaid funded trips ranged from just three percent of BARTS trips to 38 percent of Columbus County Transportation trips.

The following sections, tables, and maps summarize transit services and major destinations in the Eastern-South analysis district.

Existing Service Information

Table A-25: Selected NTD Statistics for Eastern-South Analysis District Providers, 2015

Provider	Service Area Population	Mode	Ridership ⁴		Revenue Hours		Revenue Miles Total
			Total	Per Capita	Total	Per Capita	
Bladen Area Rural Transportation System (BARTS)	34,720	Demand Response	28,174	0.81	4,713	0.14	123,389
Columbus County Transportation	57,230	Demand Response	35,070	0.61	22,395	0.39	541,289
Duplin County Transportation Department	59,453	Demand Response	38,318	0.64	18,315	0.31	490,644
Sampson Area Transportation (SAT)	63,873	Demand Response	30,532	0.48	10,671	0.17	212,745
South East Area Transit System (SEATS)	134,871	Demand Response	54,445	0.40	16,081	0.12	339,428

Sources: Population: American Community Survey, 2011-2015, 5-Year Estimates. Transit Service Data: National Transit Database, Service table, 2015.

⁴ Ridership figures are in terms of unlinked passenger trips.



Table A-26: Service Information for Demand Response Providers in the Eastern-South Analysis District, 2017

Provider	Service Area	Eligibility
Bladen Area Rural Transportation System (BARTS)	In-County	All residents
	Out-of-county - Lumberton, Chapel Hill and Durham, Fayetteville, Wilmington and Whiteville	Medical trips
Columbus County Transportation	In-County	All residents
	Out-of-county - Eastern North Carolina, Fayetteville, Wilmington	Trips funded by human service agency, VA clinic trips
Duplin County Transportation Department	In-County	Residents and visitors
	Out-of-county - Raleigh, Durham, Chapel Hill, Greenville, Wilmington	Residents and visitors
Sampson Area Transportation (SAT)	In-County	All residents
	Out-of-County - Fayetteville and Durham	Veterans Affairs trips
South East Area Transit System (SEATS)	In-County (Lumberton-only trips on Saturdays)	All residents
	Out-of-County – Durham, Raleigh, Chapel Hill, Fayetteville, Laurinburg and Pinehurst	Medical trips

Sources: Provider websites, Coordinated Transportation Plans, interviews with provider representatives.



Major Destinations

Table A-27: Degree Granting Junior Colleges, Colleges, Universities and Professional Schools in the Eastern-South Analysis District, 2016

Name	City	County	Type	Total Enrolled	Total Employed
Bladen Community College	Dublin	Bladen	Junior College	1,392	237
Southeastern Community College	Whiteville	Columbus	Junior College	1,747	500
James Sprunt Community College	Kenansville	Duplin	Junior College	1,546	284
Robeson Community College	Lumberton	Robeson	Junior College	2,787	512
University of North Carolina At Pembroke	Pembroke	Robeson	University	6,269	922
Sampson Community College	Clinton	Sampson	Junior College	1,515	264

Source: National Center for Education Statistics, via Department of Homeland Security Homeland Infrastructure Foundation-Level Data.

Table A-28: Hospitals in the Eastern-South Analysis District, 2017

Name	City	County	Beds
Cape Fear Valley - Bladen County Hospital	Elizabethtown	Bladen	58
Columbus Regional Healthcare System	Whiteville	Columbus	154
Vidant Duplin Hospital	Kenansville	Duplin	101
Southeastern Regional Medical Center	Lumberton	Robeson	452
Sampson Regional Medical Center	Clinton	Sampson	146

Source: Department of Homeland Security Homeland Infrastructure Foundation-Level Data portal.

Table A-29: Correctional Facilities in the Eastern-South Analysis District, 2017

Name	Facility Type	City	County	Population
Columbus Correctional Institution	State	Brunswick	Columbus	688
Tabor Correctional Institution	State	Tabor City	Columbus	1,468
Lumberton Correctional Institution	State	Lumberton	Robeson	766
Robeson CRV Center	State	Lumberton	Robeson	184
Sampson Correctional Institution	State	Clinton	Sampson	455

Source: Department of Homeland Security Homeland Infrastructure Foundation-Level Data portal.



Table A-30: County Seats in the Eastern-South Analysis District

County Seat	County
Clinton	Sampson
Elizabethtown	Bladen
Kenansville	Duplin
Lumberton	Robeson
Whiteville	Columbus

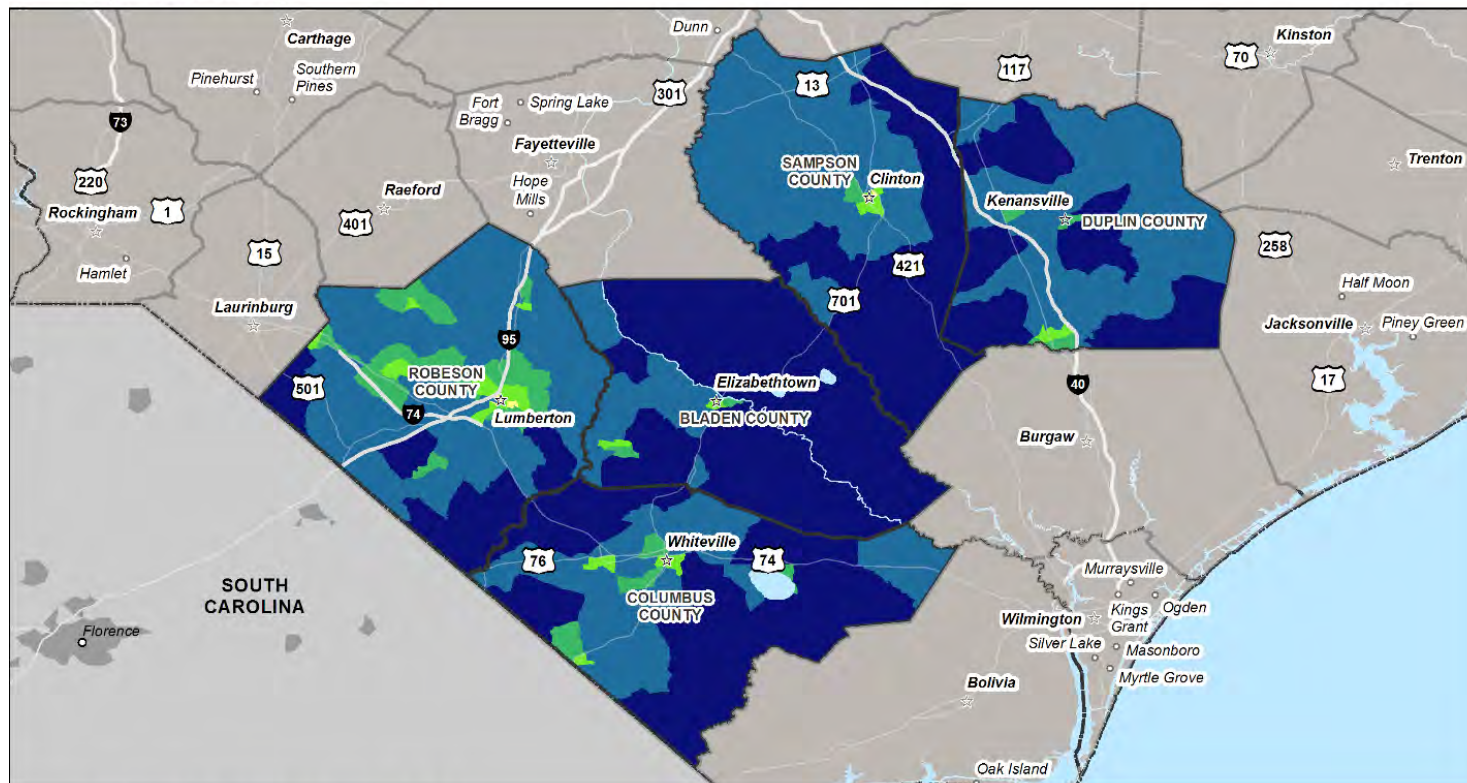
Table A-31: Social Security Offices in the Eastern-South Analysis District

Location	County
Lumberton	Robeson
Whiteville	Columbus

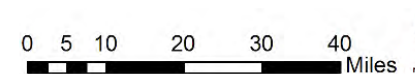
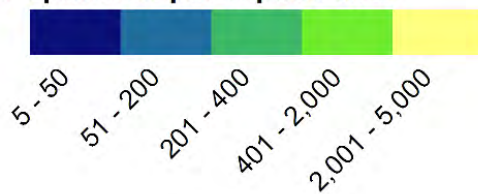


Figure A-4: Map of Population Density of Eastern-South Analysis District, American Community Survey, 2015

Eastern-South Population Density



Population per Square Mile





Eastern Urban

The 12 providers of the Eastern Urban analysis district provide diverse transit options in both rural and urban areas. Half of the providers are associated with a county, while the other six are either city, transit agency, or non-profit providers. Much of the demand response service is paratransit that supports fixed-route bus service, but there are multiple services that serve rural areas where fixed-route service does not operate.

Lenoir County Transit provided the most demand response service per capita, with 1.14 trips per resident in 2015. On average, demand response providers that serve all residents without regard to age or disability provided 0.86 trips per resident. This ratio suggests that there is a strong ridership base that can be expanded further.

In 2015, Greenville Area Transit provided the most fixed-route trips in the Eastern Urban analysis district, with over 510,000 trips for its six routes. Tar River Transit in Rocky Mount has 12 routes, the most in this analysis district, and provided almost 300,000 trips per year. On average, fixed route systems in this analysis district provided 2.87 trips per resident in 2015. The number of trips in this analysis district has the potential to grow if the need for new and expanded routes documented in existing local plans is fulfilled.

The following sections, tables, and maps summarize transit services and major destinations in the Eastern Urban analysis district.



Existing Service Information

Table A-32: Selected NTD Statistics for Eastern Urban Analysis District Providers, 2015

Provider	Service Area Population	Mode	Ridership ⁵		Revenue Hours		Revenue Miles
			Total	Per Capita	Total	Per Capita	Total
Carteret County Area Transportation System	68,228	Demand Response	57,505	0.84	28,378	0.42	492,868
		Fixed-Route Bus	4,079	0.06	2,863	0.04	46,960
Craven Area Rural Transit System (CARTS)	127,598	Demand Response	86,927	0.68	42,624	0.33	708,841
Goldsboro-Wayne Transportation Authority	124,355	Demand Response	53,507	0.43	25,881	0.21	415,410
	35,952 ⁶	Fixed-Route Bus	213,265	5.93	18,987	0.53	307,478
Greene County Transportation	21,328	Demand Response	18,399	0.86	6,122	0.29	164,340
Greenville Area Transit (GREAT)	88,598	Demand Response	11,999	0.14	5,999	0.07	53,777
		Fixed-Route Bus	513,655	5.80	21,233	0.24	299,001
Jacksonville Transit	68,315	Demand Response	4,113	0.06	1,871	0.03	31,072
		Fixed-Route Bus	110,496	1.62	17,719	0.26	301,708
Lenoir County Transit	58,782	Demand Response	67,090	1.14	29,131	0.50	532,836
Onslow United Transit System	183,753	Demand Response	85,054	0.46	40,569	0.22	748,666
Pitt Area Transit System	85,200	Demand Response	37,641	0.44	23,666	0.28	331,510
Tar River Transit	150,002	Demand Response	92,203	0.61	53,970	0.36	1,190,971
		Fixed-Route Bus	297,844	1.99	21,414	0.14	329,369
Wilson County Transportation Services (WCTS)	81,581	Demand Response	57,764	0.71	36,538	0.45	557,976
Wilson Transit System	49,478	Fixed-Route Bus	89,707	1.81	12,540	0.25	186,594

⁵ Ridership figures are in terms of unlinked passenger trips.

⁶ Fixed-route bus only operates in Goldsboro.



Sources: Population: American Community Survey, 2011-2015 5-Year Estimates. Transit Service Data: National Transit Database, Service table, 2015. All transit providers listed reported data to the NTD.

Table A-33: Service Information for Demand Response Providers in the Eastern Urban Analysis District, 2017

Provider	Service Area	Eligibility	Other Available Services
Carteret County Area Transportation System	In-County	All residents	Friendly Medical Transportation, a non-emergency medical transportation provider
	Out-of-County - Havelock, New Bern, Maysville, Jacksonville, Greenville, Kinston, Wilmington, Raleigh, Durham, Chapel Hill	All residents	
Craven Area Rural Transit System (CARTS)	In-Area	All residents	
	Out-of-Area - Greenville, Morehead City, Kinston, Durham, Chapel Hill	All residents	
Goldsboro-Wayne Transportation Authority	In-Area	All residents	
	Out-of-Area - Chapel Hill, Durham, Raleigh, Greenville	All residents	
Greene County Transportation	In-Area	Medical appointments, community college, job sites	
	Out-of-County - Greenville, Farmville, Kinston	Medicaid recipients	
Greenville Area Transit	In-Area - 3/4 mile of fixed-route	Disabled residents only	
Jacksonville Transit	In-Area - 3/4 mile of fixed-route for ADA services	Disabled residents only	Other dial-a-ride services provided by Onslow United Transit System; Friendly Medical Transportation, a non-emergency medical transportation provider
Lenoir County Transit	In-County	Medical appointments, work, community college, job sites	
	Out-of-Area – destinations unknown	Medical appointments, job interviews	
Onslow United Transit System	In-Area	All residents	



Provider	Service Area	Eligibility	Other Available Services
	Out-of-Area - Wilmington, Chapel Hill, Durham, Morehead City	All residents	Friendly Medical Transportation, a non-emergency medical transportation provider
Pitt Area Transit System	In-County	All residents living outside of Greenville	Mary's Care Transportation
	Out-of-County - Chapel Hill, Durham	Medical appointments	
Tar River Transit	In-Area	Disabled residents	K&L Transport Service
	Out-of-Area – Wilson County, Raleigh, Greenville	Medical appointments	
Wilson County Transportation Services (WCTS)	In-County - must be farther than 1/4 mile away from Wilson Transit System bus	All residents	
	Unknown if out-of-county service is provided		
Wilson Transit System	In-Area - must be within 1/4 mile of fixed-route bus	Disabled residents	

Sources: Provider websites, Coordinated Transportation Plans, interviews with provider representatives.

Table A-34: Service Information for Fixed-Route Providers in the Eastern Urban Analysis District, 2017

Provider	Fixed-Routes	Deviated Fixed-Routes
Carteret County Area Transportation System	0	1
Craven Area Rural Transit System (CARTS)	2	0
Goldsboro-Wayne Transportation Authority	5	0
Greenville Area Transit	6	0
Jacksonville Transit⁷	6	0
Tar River Transit	12	0
Wilson Transit System	1	5

Sources: Provider websites and interviews with provider representatives.

⁷ Jacksonville Transit operates two late-night weekend routes that travel to Camp Lejeune and other Marine Corps bases.



Major Destinations

Table A-35: Major Degree Granting Junior Colleges, Colleges, Universities and Professional Schools in the Eastern Urban Analysis District, 2016

Name	City	County	Type	Total Enrolled	Total Employed
Carteret Community College	Morehead City	Carteret	Junior College	1,706	193
Craven Community College	New Bern	Craven	Junior College	3,029	756
Edgecombe Community College	Tarboro	Edgecombe	Junior College	3,025	399
Lenoir Community College	Kinston	Lenoir	Junior College	2,993	558
Nash Community College	Rocky Mount	Nash	Junior College	3,222	435
North Carolina Wesleyan College	Rocky Mount	Nash	College	1,463	329
Coastal Carolina Community College	Jacksonville	Onslow	Junior College	4,442	752
Miller-Motte College	Jacksonville	Onslow	Junior College	447	63
Pamlico Community College	Grantsboro	Pamlico	Junior College	570	127
East Carolina University	Greenville	Pitt	University	26,947	5,646
Miller-Motte College-Greenville	Greenville	Pitt	Junior College	446	83
Pitt Community College	Winterville	Pitt	Junior College	8,908	927
Mount Olive College	Mount Olive	Wayne	College	3,690	408
Wayne Community College	Goldsboro	Wayne	Junior College	3,358	518
Barton College	Wilson	Wilson	College	1,130	195

Source: National Center for Education Statistics, via Department of Homeland Security Homeland Infrastructure Foundation-Level Data portal.



Table A-36: Hospitals in the Eastern Urban Analysis District, 2017

Name	City	County	Beds
Carteret General Hospital	Morehead City	Carteret	135
Carolina East Health System	New Bern	Craven	350
Naval Health Clinic Cherry Point	Cherry Point	Craven	N/A
Vidante Edgecombe Hospital	Tarboro	Edgecombe	117
Lenoir Memorial Hospital	Kinston	Lenoir	261
Lifecare Hospitals of North Carolina	Rocky Mount	Nash	50
Nash General Hospital	Rocky Mount	Nash	353
Naval Hospital Camp Lejeune	Camp Lejeune	Onslow	N/A
Onslow Memorial Hospital	Jacksonville	Onslow	162
Vidant Medical Center	Greenville	Pitt	909
Wayne Memorial Hospital	Goldsboro	Wayne	316

Source: Department of Homeland Security Homeland Infrastructure Foundation-Level Data portal.

Table A-37: Correctional Facilities in the Eastern Urban Analysis District, 2017

Name	Facility Type	City	County	Population
Carteret Correctional Center	State	Newport	Carteret	286
Craven Correctional Institution	State	Vanceboro	Craven	733
Eastern Correctional Institution	State	Maury	Greene	391
Greene Correctional Institution	State	Maury	Greene	643
Maury Correctional Institution	State	Hookerton	Greene	1,148
Dobbs Youth Development Center	State	Kinston	Lenoir	N/A
Nash Correctional Institution	State	Nashville	Nash	646
Pamlico Correctional Institution	State	Bayboro	Pamlico	562
Pitt Regional Juvenile Detention Center	State	Greenville	Pitt	N/A
Neuse Correctional Institution	State	Goldsboro	Wayne	777

Source: Department of Homeland Security Homeland Infrastructure Foundation-Level Data portal.



Table A-38: County Seats in the Eastern Urban Analysis District

County Seat	County
Bayboro	Pamlico
Beaufort	Carteret
Goldsboro	Wayne
Greenville	Pitt
Jacksonville	Onslow
Kinston	Lenoir
Nashville	Nash
New Bern	Craven
Snow Hill	Greene
Tarboro	Edgecombe
Trenton	Jones
Wilson	Wilson

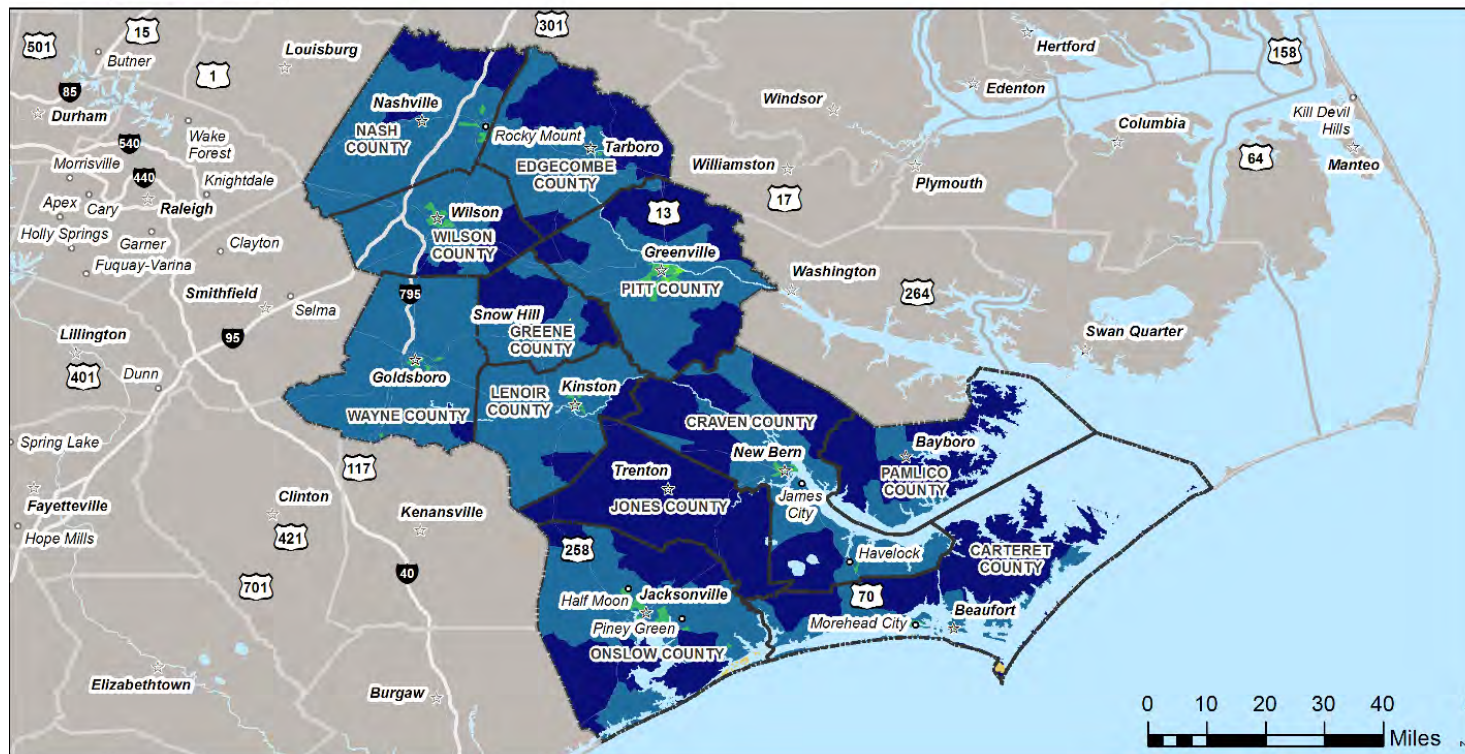
Table A-39: Social Security Offices in the Eastern Urban Analysis District

Location	County
Goldsboro	Wayne
Greenville	Pitt
Kinston	Lenoir
New Bern	Craven
Rocky Mount	Nash
Wilson	Wilson



Figure A-5: Map of Population Density of Eastern Urban Analysis District, American Community Survey, 2015

Eastern Urban Population Density



Population per Square Mile





Foothills

Three counties provide demand response transit service in the Foothills analysis district. In 2015, Polk County Transportation Authority provided the largest number of trips per capita (1.94), of which the majority were out-of-county trips. Rutherford County Transit and Transportation Administration of Cleveland County (TACC) provided 0.65 and 0.59 trips per capita, respectively.

Rutherford County Transit and TACC also provide deviated fixed-route bus service, in addition to demand response. Each service has headways of 90 to 105 minutes, and operate from the morning peak period to mid-day or early evening. In 2015, Rutherford County Transit and TACC provided about 4,700 and 5,800 trips on deviated fixed route services, respectively.

The following sections, tables, and maps summarize transit services and major destinations in the Foothills analysis district.

Existing Service Information

Table A-40: Selected NT) Statistics for Foothills Analysis District Providers, 2015

Provider	Service Area Population	Mode	Ridership ⁸		Revenue Hours		Revenue Miles
			Total	Per Capita	Total	Per Capita	Total
Polk County Transportation Authority	20,327	Demand Response	39,520	1.94	19,305	0.95	356,307
Rutherford County Transit	66,865	Demand Response	43,131	0.65	23,899	0.36	461,973
		Fixed-Route Bus	4,667	0.07	2,576	0.04	36,660
Transportation Administration of Cleveland County (TACC)	97,178	Demand Response	57,670	0.59	39,654	0.41	599,394
		Fixed-Route Bus	5,827	0.06	2,345	0.02	27,243

Sources: Population: American Community Survey, 2011-2015 5-Year Estimates. Transit Service Data: National Transit Database, Service table, 2015. All transit providers listed reported data to the NTD.

⁸ Ridership figures are in terms of unlinked passenger trips.



Table A-41: Service Information for Demand Response Providers in the Foothills Analysis District, 2017

Provider	Service Area	Eligibility	Other Available Services
Polk County Transportation Authority	In-County	All residents	Retirement community shuttles
	Out-of-county - Hendersonville	All residents	
Rutherford County Transit	In-County	Medicaid clients, senior citizens, disabled residents	
	Out-of-county - Shelby, Asheville, Hendersonville, Columbus, Charlotte, Gastonia, Mooresville, Kings Mountain, Spartanburg, Hickory, Morganton, Winston-Salem, Durham, Chapel Hill	Medical appointment trips only for Medicaid clients, senior citizens, disabled residents	
Transportation Administration of Cleveland County (TACC)	Service area unknown	Eligibility unknown	

Sources: Provider websites, Coordinated Transportation Plans, interviews with provider representatives.

Table A-42: Service Information for Fixed-Route Providers in the Foothills Analysis District, 2017

Provider	Fixed-Routes	Deviated Fixed-Routes
Rutherford County Transit	0	1
Transportation Administration of Cleveland County (TACC)	0	1

Sources: Provider websites and interviews with provider representatives.



Major Destinations

Table A-43: Degree Granting Junior Colleges, Colleges, Universities and Professional Schools in the Foothills Analysis District, 2016

Name	City	County	Type	Total Enrolled	Total Employed
Cleveland Community College	Shelby	Cleveland	Junior College	3,398	528
Gardner-Webb University	Boiling Springs	Cleveland	University	4,933	957
Isothermal Community College	Spindale	Rutherford	Junior College	2,457	504

Source: National Center for Education Statistics, via Department of Homeland Security Homeland Infrastructure Foundation-Level Data portal.

Table A-44: Hospitals in the Foothills Analysis District, 2017

Name	City	County	Beds
Carolinas Healthcare System Cleveland	Shelby	Cleveland	241
Carolinas Healthcare System Kings Mountain	Kings Mountain	Cleveland	102
St. Luke's Hospital	Columbus	Polk	35
Rutherford Hospital	Rutherfordton	Rutherford	143

Source: Department of Homeland Security Homeland Infrastructure Foundation-Level Data portal.

Table A-45: Correctional Facilities in the Foothills Analysis District, 2017

Name	Facility Type	City	County	Population
Rutherford Correctional Center	State	Spindale	Rutherford	230

Source: Department of Homeland Security Homeland Infrastructure Foundation-Level Data portal



Table A-46: County Seats in the Foothills Analysis District

County Seat	County
Columbus	Polk
Rutherfordton	Rutherford
Shelby	Cleveland

Table A-47: Social Security Offices in the Foothills Analysis District

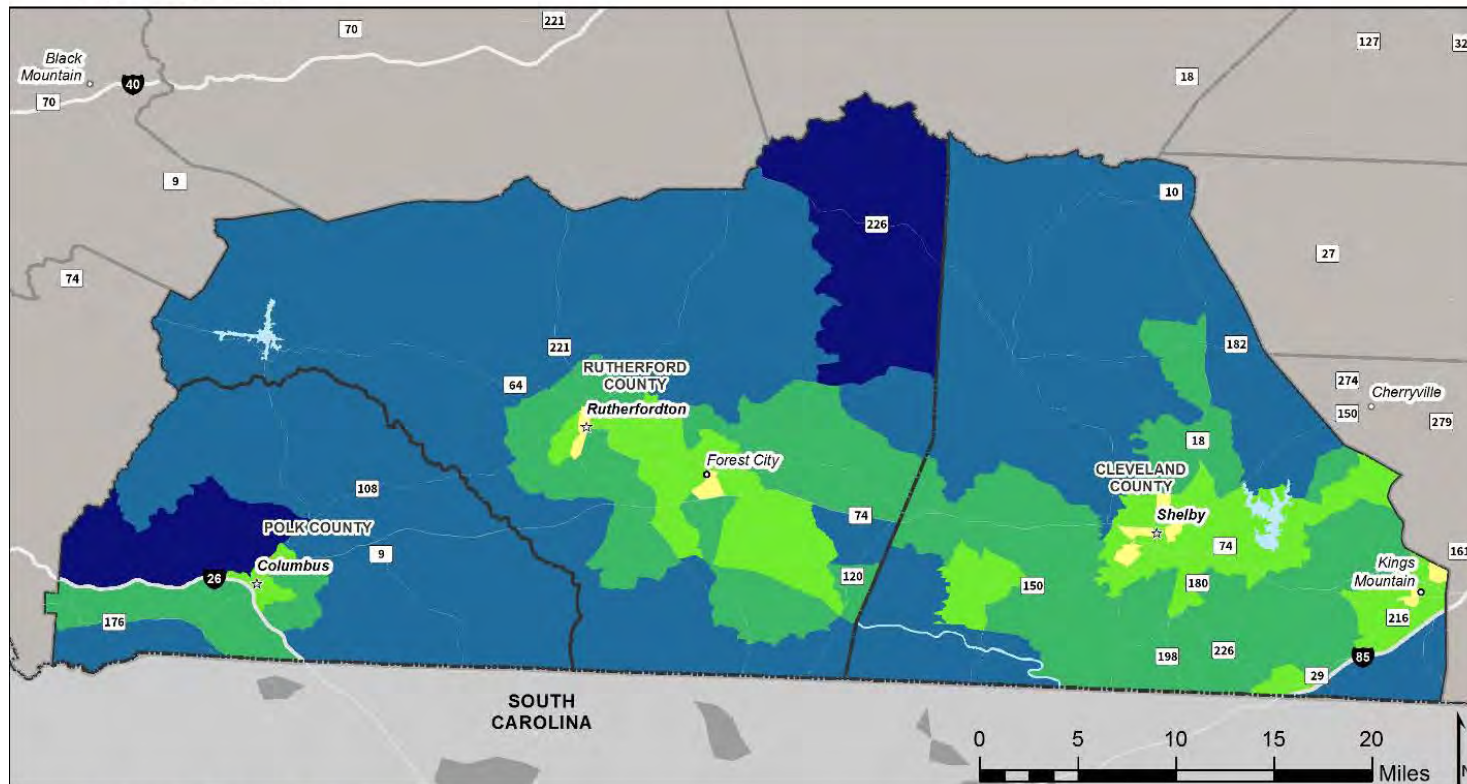
Location	County
Shelby	Cleveland



Figure A-6: Map of Population Density of Foothills Analysis District, American Community Survey, 2015

Foothills

Population Density



Population per Square Mile





Hickory

The Hickory analysis district has two providers: Greenway Public Transportation, a regional transit agency that serves Alexander, Burke, Caldwell, and Catawba counties, and McDowell Department of Social Services that serves only McDowell County. McDowell DSS did not report to the National Transit Database in 2015, and thus data on service delivery is not available.

Greenway Public Transportation provides six fixed-routes and one deviated fixed-route in the cities of Conover, Hickory, Newton, and Taylorville. Most routes have one-hour headways; however, Routes 5 and 6 to the Conover Walmart has two-hour headways and the Taylorsville Flex Route has half-hour headways. Greenway Public Transportation also provides two types of demand response: paratransit and rural general public transit. In 2015, these services provided 0.28 trips per capita.

The following sections, tables, and maps summarize transit services and major destinations in the Hickory analysis district.

Existing Service Information

Table A-48: Selected NTD Statistics for Hickory Analysis District Providers, 2015

Provider	Service Area Population	Mode	Ridership ⁹		Revenue Hours		Revenue Miles
			Total	Per Capita	Total	Per Capita	Total
Greenway Public Transportation	363,074	Demand Response	100,198	0.28	51,991	0.14	779,569
		Fixed-Route Bus	124,344	0.34	13,936	0.04	251,424
McDowell Department of Social Services	44,961	Did not report to NTD in 2015					

Sources: Population: American Community Survey, 2011-2015 5-Year Estimates. Transit Service Data: National Transit Database, Service table, 2015. Only Greenway Public Transportation reported to NTD.

⁹ Ridership figures are in terms of unlinked passenger trips.



Table A-49: Service Information for Demand Response Providers in the Hickory Analysis District, 2017

Provider	Service Area	Eligibility
Greenway Public Transportation	Paratransit - ¾ mile from fixed-route for paratransit	Certified disabled passengers (includes visitors)
	Rural General Public Transit - Alexander, Burke, Caldwell, and Catawba counties; other pre-determined destinations	All residents
McDowell Department of Social Services	In-County - either gas vouchers or DSS staff drives to appointments	Medicaid recipients ¹⁰
	Out-of-County - Buncombe and Burke counties	Medicaid recipients

Sources: Provider websites, Coordinated Transportation Plans, interviews with provider representatives.

Table A-50: Service Information for Fixed-Route Providers in the Hickory Analysis District, 2017

Provider	Fixed-Routes	Deviated Fixed-Routes
Greenway Public Transportation	6	1

Sources: Provider websites and interviews with provider representatives.

Major Destinations

Table A-511: Degree Granting Junior Colleges, Colleges, Universities and Professional Schools in the Hickory Analysis District, 2016

Name	City	County	Type	Total Enrolled	Total Employed
Western Piedmont Community College	Morganton	Burke	Junior College	2,529	573
Caldwell Community College and Technical Institute	Hudson	Caldwell	Junior College	4,486	668
Catawba Valley Community College	Hickory	Catawba	Junior College	3,990	760
Lenoir-Rhyne University	Hickory	Catawba	University	1,764	384
McDowell Technical Community College	Marion	McDowell	Junior College	1,373	254

¹⁰ McDowell does not provide transportation for recipients of limited Medicare-Aid (MQB) or North Carolina Health Choice.



Source: National Center for Education Statistics, via Department of Homeland Security Homeland Infrastructure Foundation-Level Data portal.

Table A-52: Hospitals in the Hickory Analysis District, 2017

Name	City	County	Beds
Carolinas Healthcare System Blue Ridge	Morganton	Burke	315
Caldwell Memorial Hospital	Lenoir	Caldwell	110
Catawba Valley Medical Center	Hickory	Catawba	258
Frye Regional Medical Center	Hickory	Catawba	355
McDowell Hospital	Marion	McDowell	65

Source: Department of Homeland Security Homeland Infrastructure Foundation-Level Data portal.

Table A-53: Correctional Facilities in the Hickory Analysis District, 2017

Name	Facility Type	City	County	Population
Alexander Correctional Institution	State	Taylorsville	Alexander	1,205
Alexander Juvenile Detention Center	State	Taylorsville	Alexander	N/A
Burke CRV Center	State	Morganton	Burke	192
Foothills Correctional Institution	State	Morganton	Burke	748
Caldwell Correctional Center	State	Lenoir	Caldwell	270
Catawba Correctional Center	State	Newton	Catawba	244
Marion Correctional Institution	State	Marion	McDowell	564
Marion Minimum Security Unit	State	Marion	McDowell	N/A

Source: Department of Homeland Security Homeland Infrastructure Foundation-Level Data portal.



Table A-542: County Seats in the Hickory Analysis District

County Seat	County
Lenoir	Caldwell
Marion	McDowell
Morganton	Burke
Newton	Catawba
Taylorsville	Alexander

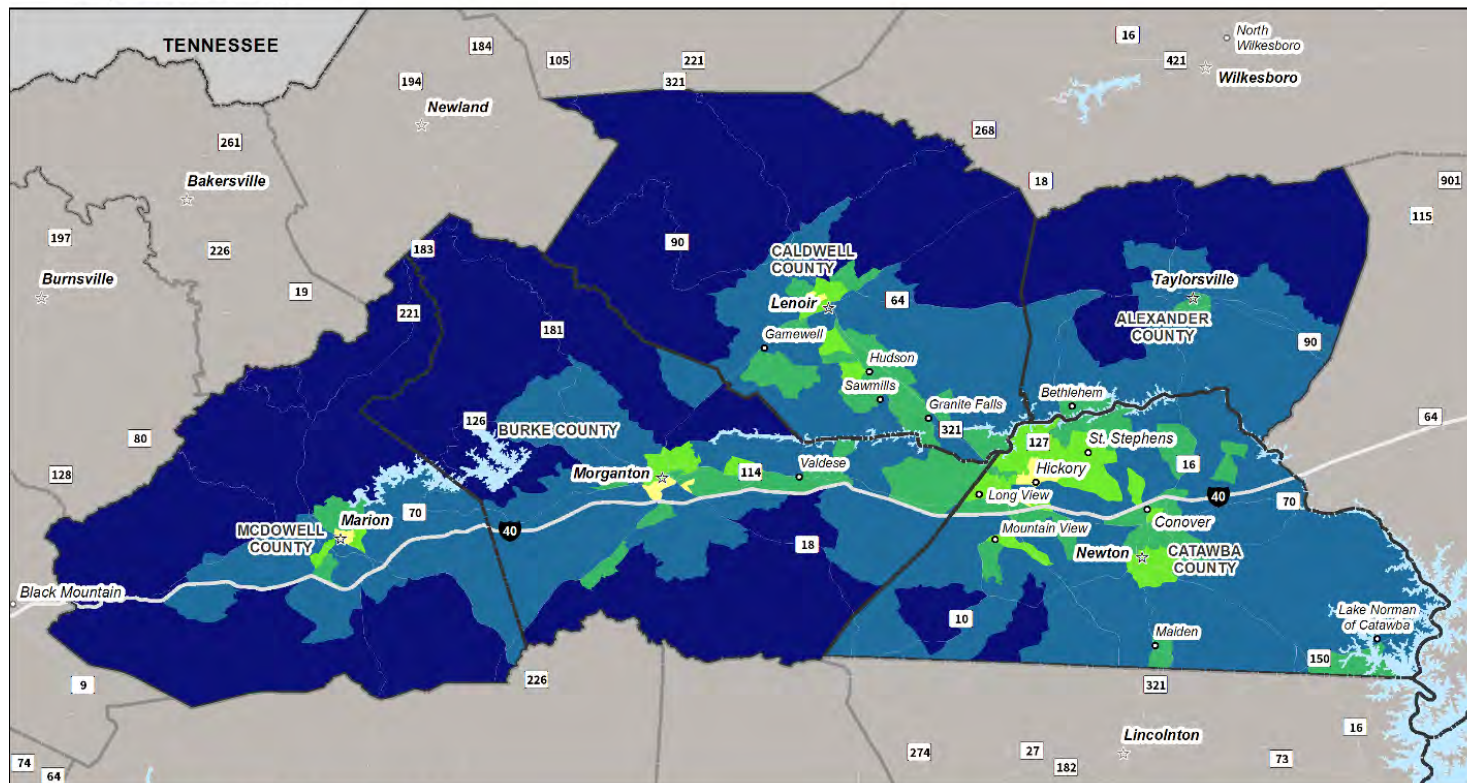
Table A-55: Social Security Offices in the Hickory Analysis District

Location	County
Hickory	Catawba

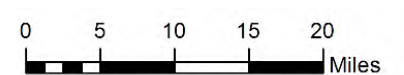
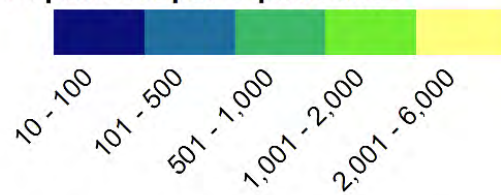


Figure A-7: Map of Population Density of Hickory Analysis District, American Community Survey, 2015

Hickory Population Density



Population per Square Mile





Kerr

The Kerr analysis district has two transit providers. Person Area Transportation System (PATS) serves Person County and Kerr-Area Transportation Authority (KARTS) serves Franklin, Granville, Vance, and Warren counties. Both providers primarily deliver demand response service to destinations in-area and out-of-area to major cities in the Research Triangle. Unlike other analysis districts, PATS and KARTS do not provide service to destinations inside of the other's service area.

Both Kerr transit providers each have one fixed bus route that operate in town centers. PATS' Roxboro Uptown shuttle is relatively new and has recently begun to experience growth in ridership as residents become more familiar with fixed-route transit service. PATS has received requests to expand the shuttle's route to serve more employment destinations. KARTS' Around Town shuttle, which connects Henderson and Oxford, provided almost 30,000 trips in 2015.

The following sections, tables, and maps summarize transit services and major destinations in the Kerr analysis district.

Existing Service Information

Table A-56: Selected NTJ Statistics for Kerr Analysis District Providers, 2015

Provider	Service Area Population	Mode	Ridership ¹¹		Revenue Hours		Revenue Miles Total
			Total	Per Capita	Total	Per Capita	
Kerr-Area Transportation Authority (KARTS)	185,702	Demand Response	159,001	0.86	112,603	0.61	2,115,527
		Fixed-Route	29,230	0.16	9,350	0.05	124,253
Person Area Transportation System (PATS)	39,262	Demand Response	46,076	1.17	13,977	0.36	305,908
		Fixed-Route	1,422	0.04	85	0.00	418

Sources: Population: American Community Survey, 2011-2015 5-Year Estimates. Transit Service Data: National Transit Database, Service table, 2015. All transit providers listed reported data to the NTD.

¹¹ Ridership figures are in terms of unlinked passenger trips.



Table A-57: Service Information for Demand Response Providers in the Kerr Analysis District, 2017

Provider	Service Area	Eligibility
Kerr-Area Transportation Authority (KARTS)	In-Area	
	Out-of-Area - Wake Forest, Raleigh, Durham, Chapel Hill	
Person Area Transportation System (PATS)	In-County	All residents
	Out-of-County - Prospect Hill, Durham, Duke, Chapel Hill	Medical appointments only

Sources: Provider websites, Coordinated Transportation Plans, interviews with provider representatives.

Table A-58: Service Information for Fixed-Route Providers in the Kerr Analysis District, 2017

Provider	Fixed-Routes	Deviated Fixed-Routes
Kerr-Area Transportation Authority (KARTS)	1	0
Person Area Transportation System (PATS)	1	0

Sources: Provider websites.

Major Destinations

Table A-59: Degree Granting Junior Colleges, Colleges, Universities and Professional Schools in the Kerr Analysis District, 2016

Name	City	County	Type	Total Enrolled	Total Employed
Louisburg College	Louisburg	Franklin	Junior College	707	153
Piedmont Community College	Roxboro	Person	Junior College	1,805	354
Vance-Granville Community College	Henderson	Vance	Junior College	4,075	586

Source: National Center for Education Statistics, via Department of Homeland Security Homeland Infrastructure Foundation-Level Data portal.



Table A-60: Hospitals in the Kerr Analysis District, 2017

Name	City	County	Beds
Granville Health System	Oxford	Granville	142
Person Memorial Hospital	Roxboro	Person	110
Maria Parham Medical Center	Henderson	Vance	102

Source: Department of Homeland Security Homeland Infrastructure Foundation-Level Data portal.

Table A-61: Correctional Facilities in the Kerr Analysis District, 2017

Name	Facility Type	City	County	Population
Franklin Correctional Center	State	Bunn	Franklin	472
Charles A Dillon Youth Development Center	State	Butner	Granville	N/A
FCI Butner Low	Federal	Butner	Granville	1,281
Polk Correctional Institution	State	Butner	Granville	800
Warren Correctional Institution	State	Manson	Warren	767

Source: Department of Homeland Security Homeland Infrastructure Foundation-Level Data portal.

Table A-62: County Seats in the Kerr Analysis District

County Seat	County
Henderson	Vance
Louisburg	Franklin
Oxford	Granville
Roxboro	Person
Warrenton	Warren

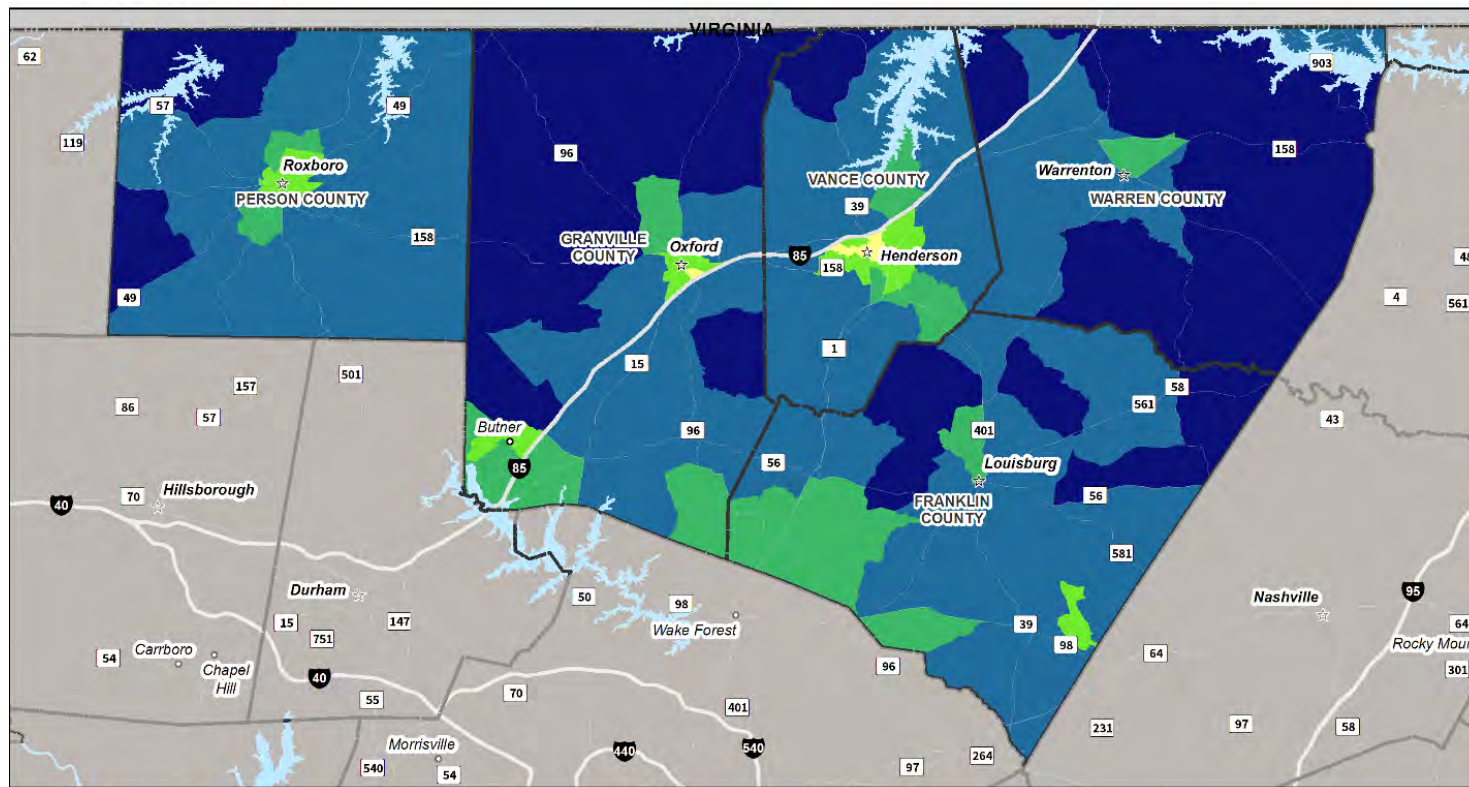
Table A-63: Social Security Offices in the Kerr Analysis District

Location	County
Henderson	Vance

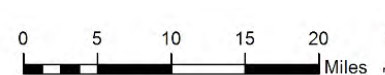


Figure A-8: Map of Population Density of Kerr Analysis District, American Community Survey, 2015

Kerr
Population Density



Population per Square Mile





Mountain Central

All four providers in the Mountain Central analysis district are county-based demand response transit that provide trips in- and out-of-county. All providers connect to Asheville as their major out-of-county destination, but other out-of-county destinations vary based on the geography and location of the counties. As key destinations, such as medical care, education, and government services, are spread out in this analysis district, these strong out-of-county connections are vital to provide residents access to essential services.

In 2015, trips per capita ranged from 1.14 to 2.80. Mitchell County Transportation Authority provided the highest number of annual trips (almost 43,000) and highest trip per capita number of trips (2.80) even though it has the smallest population in the analysis district (approximately 15,000 residents).

The following sections, tables, and maps summarize transit services and major destinations in the Mountain Central analysis district.

Existing Service Information

Table A-64: Selected NTD Statistics for Mountain Central Analysis District Providers, 2015

Provider	Service Area Population	Mode	Ridership ¹²		Revenue Hours		Revenue Miles
			Total	Per Capita	Total	Per Capita	Total
Avery County Transportation	17,695	Demand Response	23,014	1.30	15,598	0.88	256,811
Madison County Transportation Authority	21,027	Demand Response	23,892	1.14	11,600	0.55	218,727
Mitchell County Transportation Authority	15,330	Demand Response	42,928	2.80	14,415	0.94	336,877
Yancey County Transportation Authority	17,604	Demand Response	27,629	1.57	12,060	0.69	227,832

Sources: Population: American Community Survey, 2011-2015 5-Year Estimates. Transit Service Data: National Transit Database, Service table, 2015. All transit providers listed reported data to the NTD.

¹² Ridership figures are in terms of unlinked passenger trips.



Table A-65: Service Information for Demand Response Providers in the Mountain Central Analysis District, 2017

Provider	Service Area	Eligibility	Other Available Services
Avery County Transportation	In-County	All residents	
	Out-of-County - Asheville, Bakersville, Blowing Rock, Boone, Bristol, TN, Burnsville, Chapel Hill, Charlotte, Durham, Elizabethton, TN, Hickory, Johnson City, TN, Lenoir, Marion, Morganton, Raleigh, Roan Mountain, TN, Spruce Pine, Valdese, West Jefferson, Winston-Salem	Medical appointments	
Madison County Transportation Authority	In-County	All residents	DSS for Medicaid appointments
	Out-of-County - Asheville, Buncombe, Greenville, TN, Haywood, Newport, TN, Weaverville, Yancey,	All residents	DSS, Brian Center
Mitchell County Transportation Authority	In-County	All residents	
	Out-of-County - Asheville, Boone, Charlotte, Durham, Hickory, Kingsport, TN, Johnson City, TN, McDowell County, Raleigh, Winston-Salem	All residents	
Yancey County Transportation Authority	In-County	All residents	Division of Veteran Affairs
	Out-of-County - Asheville, Hendersonville, Madison County, Mitchell County	All residents	

Sources: Provider websites, Coordinated Transportation Plans, interviews with provider representatives.

Major Destinations

Table A-66: Degree Granting Junior Colleges, Colleges, Universities and Professional Schools in the Mountain Central Analysis District, 2016

Name	City	County	Type	Total Enrolled	Total Employed
Lees-McRae College	Banner Elk	Avery	College	837	194
Mars Hill College	Mars Hill	Madison	College	1,370	321
Mayland Community College	Spruce Pine	Mitchell	Junior College	1,294	261

Source: National Center for Education Statistics, via Department of Homeland Security Homeland Infrastructure Foundation-Level Data portal.



Table A-67: Hospitals in the Mountain Central Analysis District, 2017

Name	City	County	Beds
Charles A. Cannon, Jr. Memorial Hospital	Linville	Avery	50
Blue Ridge Regional Hospital	Spruce Pine	Mitchell	46

Source: Department of Homeland Security Homeland Infrastructure Foundation-Level Data portal.

Table A-68: Correctional Facilities in the Mountain Central Analysis District, 2017

Name	Facility Type	City	County	Population
Avery / Mitchell Correctional Institution	State	Spruce Pine	Avery	851
Mountain View Correctional Institution	State	Spruce Pine	Avery	895

Source: Department of Homeland Security Homeland Infrastructure Foundation-Level Data portal.

Table A-69: County Seats in the Mountain Central Analysis District

County Seat	County
Bakersville	Mitchell
Burnsville	Yancey
Marshall	Madison
Newland	Avery

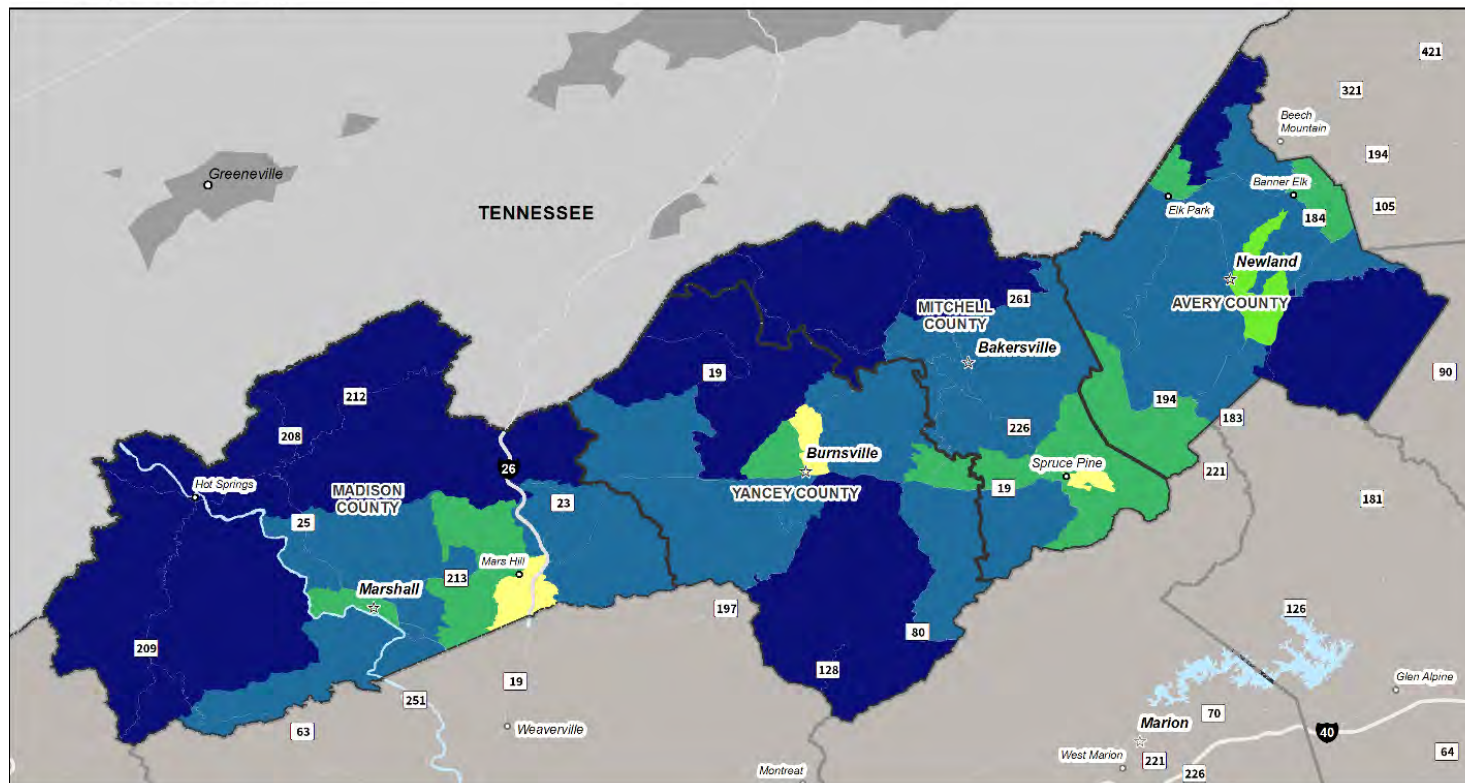
There are no Social Security Offices in the Mountain Central analysis district.



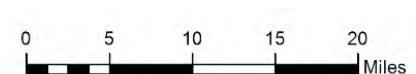
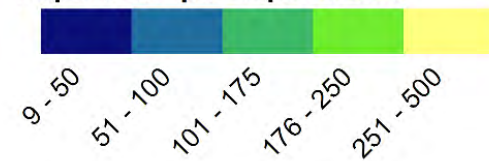
Figure A-9: Map of Population Density of Mountain Central Analysis District, American Community Survey, 2015

Mountain Central

Population Density



Population per Square Mile





Mountain North

All four transit providers in the Mountain North analysis district, Alleghany In Motion (AIM), AppalCart, Ashe County Transportation Authority, and Wilkes Transportation Authority, provide demand response service for all residents for in-county and out-of-county trips. AppalCart also provides paratransit service within three-quarters of a mile of a fixed-route and out-of-county demand response transportation for Medicaid clients.

Three Mountain North systems also provide fixed-route bus transit. AppalCart's fixed-route buses serve over 20,000 students and employees of Appalachian State University in Boone. The routes have different school-year and summer schedules to correspond to demand. Additionally, AppalCart provides ten Dial-A-Ride routes that connect Boone to other destinations in Watauga County. Together, these services provided over 1.8 million trips in 2015. Ashe County Transportation Authority and Wilkes Transportation Authority each provide one deviated fixed-route.

The following sections, tables, and maps summarize transit services and major destinations in the Mountain North analysis district.

Existing Service Information

Table A-70: Selected NTD Statistics for Mountain North Analysis District Providers, 2015

Provider	Service Area Population	Mode	Ridership ¹³		Revenue Hours		Revenue Miles
			Total	Per Capita	Total	Per Capita	Total
Alleghany In Motion (AIM)	10,911	Demand Response	17,117	1.57	11,422	1.05	302,730
AppalCart	52,240	Fixed-Route Bus	1,801,015	34.48	56,212	1.08	707,403
		Demand Response	28,247	0.54	10,244	0.20	193,305
Ashe County Transportation Authority	27,114	Demand Response	44,029	1.62	33,234	1.23	741,849
		Fixed-Route Bus	13,075	0.48	2,478	0.09	33,184
Wilkes Transportation Authority	68,946	Demand Response	44,386	0.64	30,029	0.44	514,062
		Fixed-Route Bus	14,526	0.21	3,567	0.05	47,497

Sources: Population: American Community Survey, 2011-2015 5-Year Estimates. Transit Service Data: National Transit Database, Service table, 2015. All transit providers listed reported data to the NTD.

¹³ Ridership figures are in terms of unlinked passenger trips.



Table A-71: Service Information for Demand Response Providers in the Mountain North Analysis District, 2017

Provider	Service Area	Eligibility
Alleghany In Motion (AIM)	In-county	All residents
	Out-of-county – destinations unknown	All residents
AppalCart	3/4 mile from in-town routes	Disabled residents
	Out-of-county – Charlotte, Hickory, Wilkesboro, Winston-Salem	Medicaid clients
Ashe County Transportation Authority	In-county	All residents
	Out-of-county – Asheville, Charlotte, Durham, Greensboro, Johnson City, TN, Abington, VA, other destinations	All residents
Wilkes Transportation Authority	In-county	All residents
	Out-of-county – Charlotte, Greensboro, Winston-Salem	All residents

Sources: Provider websites, Coordinated Transportation Plans, interviews with provider representatives.

Table A-72: Service Information for Fixed-Route Providers in the Mountain North Analysis District, 2017

Provider	Fixed-Routes	Deviated Fixed-Routes
AppalCart	22	0
Ashe County Transportation Authority	0	1
Wilkes Transportation Authority	0	1

Sources: Provider websites and interviews with provider representatives.

Major Destinations

Table A-73: Degree Granting Junior Colleges, Colleges, Universities and Professional Schools in the Mountain North Analysis District, 2016

Name	City	County	Type	Total Enrolled	Total Employed
Appalachian State University	Boone	Watauga	University	17,621	2,878
Jung Tao School of Classical Chinese Medicine	Sugar Grove	Watauga	Professional School	71	20
Wilkes Community College	Wilkesboro	Wilkes	Junior College	2,660	569

Source: National Center for Education Statistics, via Department of Homeland Security Homeland Infrastructure Foundation-Level Data.



Table A-74: Hospitals in the Mountain North Analysis District, 2017

Name	City	County	Beds
Alleghany Memorial Hospital	Sparta	Alleghany	41
Ashe Memorial Hospital	Jefferson	Ashe	76
Watauga Medical Center	Boone	Watauga	117
Wilkes Regional Medical Center	North Wilkesboro	Wilkes	130

Source: Department of Homeland Security Homeland Infrastructure Foundation-Level Data portal.

Table A-75: Correctional Facilities in the Mountain North Analysis District, 2017

Name	Facility Type	City	County	Population
Craggy Correctional Center	State	Asheville	Buncombe	582
Swannanoa Correctional Center for Women	State	Swannanoa	Buncombe	337

Source: Department of Homeland Security Homeland Infrastructure Foundation-Level Data portal

Table A-76: County Seats in the Mountain North Analysis District

County Seat	County
Boone	Watauga
Jefferson	Ashe
Sparta	Alleghany
Wilkesboro	Wilkes

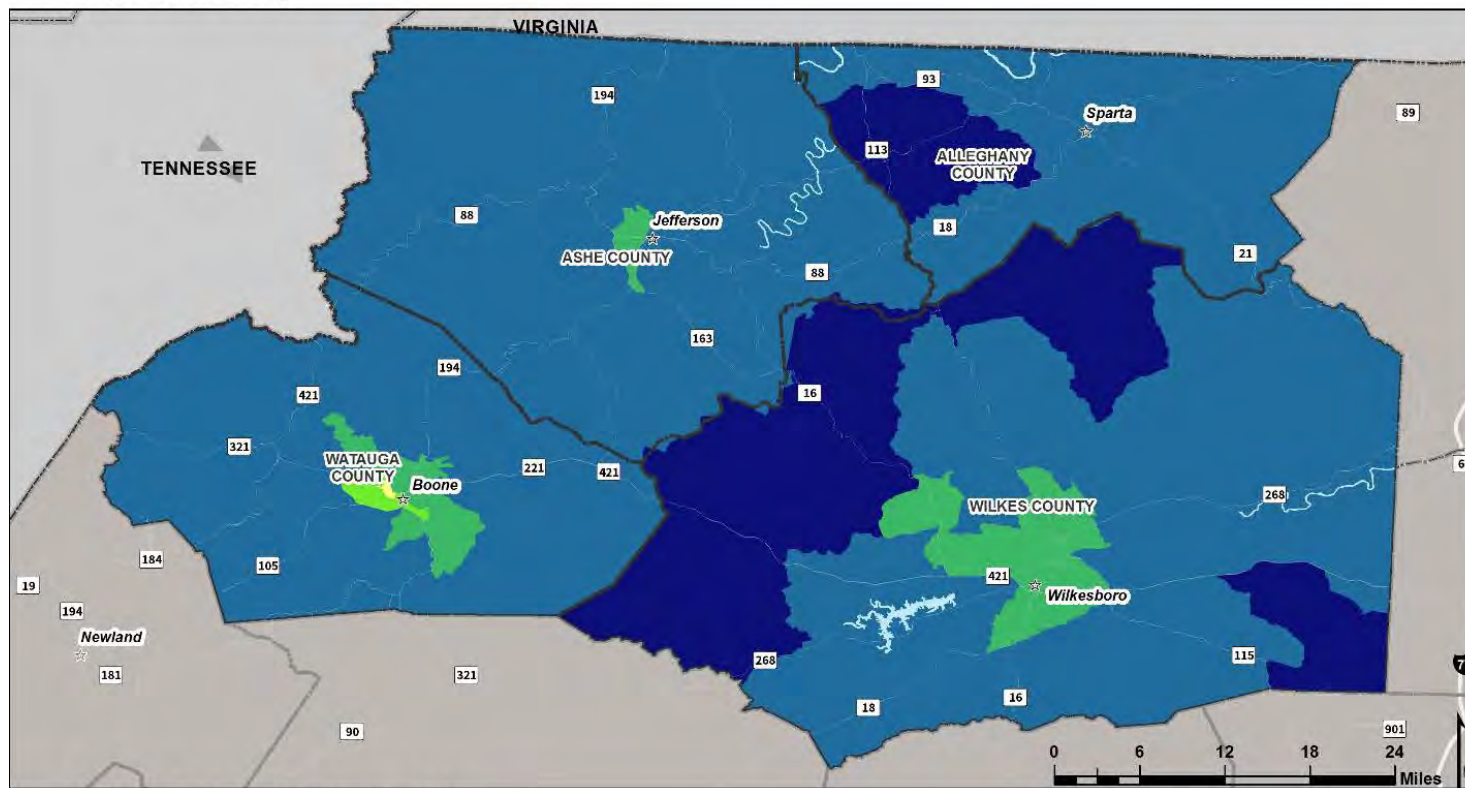
Table A-77: Social Security Offices in the Mountain North Analysis District

Location	County
Wilkesboro	Wilkes



Figure A-10: Map of Population Density of Mountain North Analysis District, American Community Survey, 2015

Mountain North Population Density



Population per Square Mile





Mountain South

The eight providers in the seven-county Mountain South analysis group primarily operate demand response transit. In addition to providing trips within their jurisdiction, all providers also serve destinations outside their jurisdiction with demand response services. However, some providers will only make such trips for medical appointments. Cherokee County reported the highest ridership of any Mountain South demand response service, more than 34,000 passenger trips in 2015, which may be due in part to the high number of out-of-county destinations it serves relative to other jurisdictions.

Fixed route services are operated by four providers: Cherokee County, Jackson County, the Eastern Band of Cherokee Indians (EBCI), and Macon County (see Table 3). In most cases, these fixed routes will deviate to specific stops or within a zone around the route alignment. The three fixed route services of the Eastern Band of Cherokee Indians generate the highest ridership of any transit service in the Mountain South analysis group, serving more than 70,000 passenger trips in 2015. For other agencies with both demand response and fixed route service, ridership and service levels on fixed route transit are below that of the agency's demand response service.

The following sections, tables, and maps summarize transit services and major destinations in the Mountain South analysis district.



Existing Service Information

Table A-78: Selected NTD Statistics for Mountain South Analysis District Providers, 2015

Provider	Service Area Population	Mode	Ridership ¹⁴		Revenue Hours		Revenue Miles
			Total	Per Capita	Total	Per Capita	Total
Cherokee County Transit	27,092	Demand Response	34,168	1.26	12,383	0.46	302,308
		Fixed Route	3,788	0.14	1,554	0.06	17,480
Cherokee Transit	9,796	Fixed Route ¹⁵	73,887	7.54	66,171	6.75	493,486
Clay County Transportation	10,656	Demand Response	16,052	1.51	12,626	1.18	227,561
Graham County Transit	8,700	Demand Response	25,161	2.89	6,923	0.80	196,582
Jackson County Transit	40,812	Demand Response	21,468	0.53	11,018	0.27	220,481
		Fixed Route	7,271	0.18	2,418	0.06	38,456
Macon County Transit	33,919	Demand Response	27,781	0.82	18,040	0.53	333,612
		Fixed Route	9,301	0.27	3,702	0.11	56,153
Swain Public Transit	14,163	Demand Response	26,325	1.86	9,121	0.64	160,749
Transylvania County Transportation System	32,928	Demand Response	25,122	0.76	8,420	0.26	112,371

Sources: Population: American Community Survey, 2011-2015 5-Year Estimates. Transit Service Data: National Transit Database, Service table, 2015. All transit providers listed reported data to the NTD.

¹⁴ Ridership figures are in terms of unlinked passenger trips.

¹⁵ The Eastern Band of Cherokee Indians also provides demand response service for medical appointments.



Table A-79: Service Information for Demand Response Providers in the Mountain South Analysis District, 2017

Provider	Service Area	Eligibility
Cherokee County Transit	In-County	All residents
	Out-of-County – Asheville, Clyde, Franklin, Hayesville, Hendersonville, Robbinsville, Sylva, and Waynesville; Atlanta and Blairsville in Georgia; Chattanooga, Gainesville, Knoxville, Turtletown	Medical appointment trips
Cherokee Transit	In-Area	All residents
	Out-of-Area – Asheville, Buncombe County, Winston-Salem, Chapel Hill, Charlotte, Georgia	Medical appointment trips
Clay County Transportation	In-County	All residents
	Out-of-County – Andrews, Asheville, Clayton, Clyde, Franklin, Murphy, Sylva; Atlanta, Blairsville, Gainesville, Hiawassee, and Young Harris in Georgia	All residents
Graham County Transit	In-County	All residents
	Out-of-County – Cherokee, Andrews, and counties of Cherokee, Clay, Swain, Jackson, Macon, Haywood, Buncombe and Henderson	All residents
Jackson County Transit	In-County	All residents
	Out-of-County – Asheville Airport and Asheville Greyhound Bus Station, Bryson City, Clyde, Franklin, Waynesville	Medical appointment trips, airport and Greyhound bus station trips
Macon County Transit	In-County	All residents
	Out-of-County – Asheville, Bryson City, Sylva, Waynesville; Dillard and Clayton in Georgia	Medical appointment trips
Swain Public Transit	In-County	All residents
	Out-of-County – Asheville, Franklin, Sylva, Waynesville	All residents



Provider	Service Area	Eligibility
Transylvania County Transportation System	In-County	All residents
	Out-of-County – Asheville, Henderson	Medical appointment trips

Sources: Provider websites, Coordinated Transportation Plans, interviews with provider representatives.

Table A-80: Service Information for Fixed-Route Providers in the Mountain South Analysis District, 2017

Provider	Fixed Routes	Deviated Fixed Routes
Cherokee County Transit	0	1
Cherokee County Transit	2	4
Jackson County Transit	0	1
Macon County Transit	0	1

Sources: Provider websites and interviews with provider representatives.

Major Destinations

Table A-81: Degree Granting Junior Colleges, Colleges, Universities and Professional Schools in the Mountain South Analysis District, 2016

Name	City	County	Type	Total Enrolled	Total Employed
Tri-County Community College	Murphy	Cherokee	Junior College	1,475	280
Western Carolina University	Cullowhee	Jackson	University	9,608	1,537
Southwestern Community College	Sylva	Jackson	Junior College	2,622	457
Brevard College	Brevard	Transylvania	College	633	200

Source: National Center for Education Statistics, via Department of Homeland Security Homeland Infrastructure Foundation-Level Data portal.



Table A-82: Hospitals in the Mountain South Analysis District, 2017

Name	City	County	Beds
Murphy Medical Center	Murphy	Cherokee	191
Harris Regional Hospital	Sylva	Jackson	86
Highlands-Cashiers Hospital	Highlands	Macon	24
Angel Medical Center	Franklin	Macon	59
Swain Community Hospital	Bryson City	Swain	48
Cherokee Indian Hospital Authority	Cherokee	Swain	28
Transylvania Community Hospital, Inc. and Bridgeway	Brevard	Transylvania	94

Source: Department of Homeland Security Homeland Infrastructure Foundation-Level Data portal.

There are no correctional facilities in the Mountain South analysis district

Table A-83: County and Governmental Seats in the Mountain South Analysis District

County Seat	County
Brevard	Transylvania County
Bryson City	Swain County
Cherokee	Eastern Band of Cherokee Indians Reservation
Franklin	Macon County
Hayesville	Clay County
Murphy	Cherokee County
Robbinsville	Graham County
Sylva	Jackson County
Brevard	Transylvania County

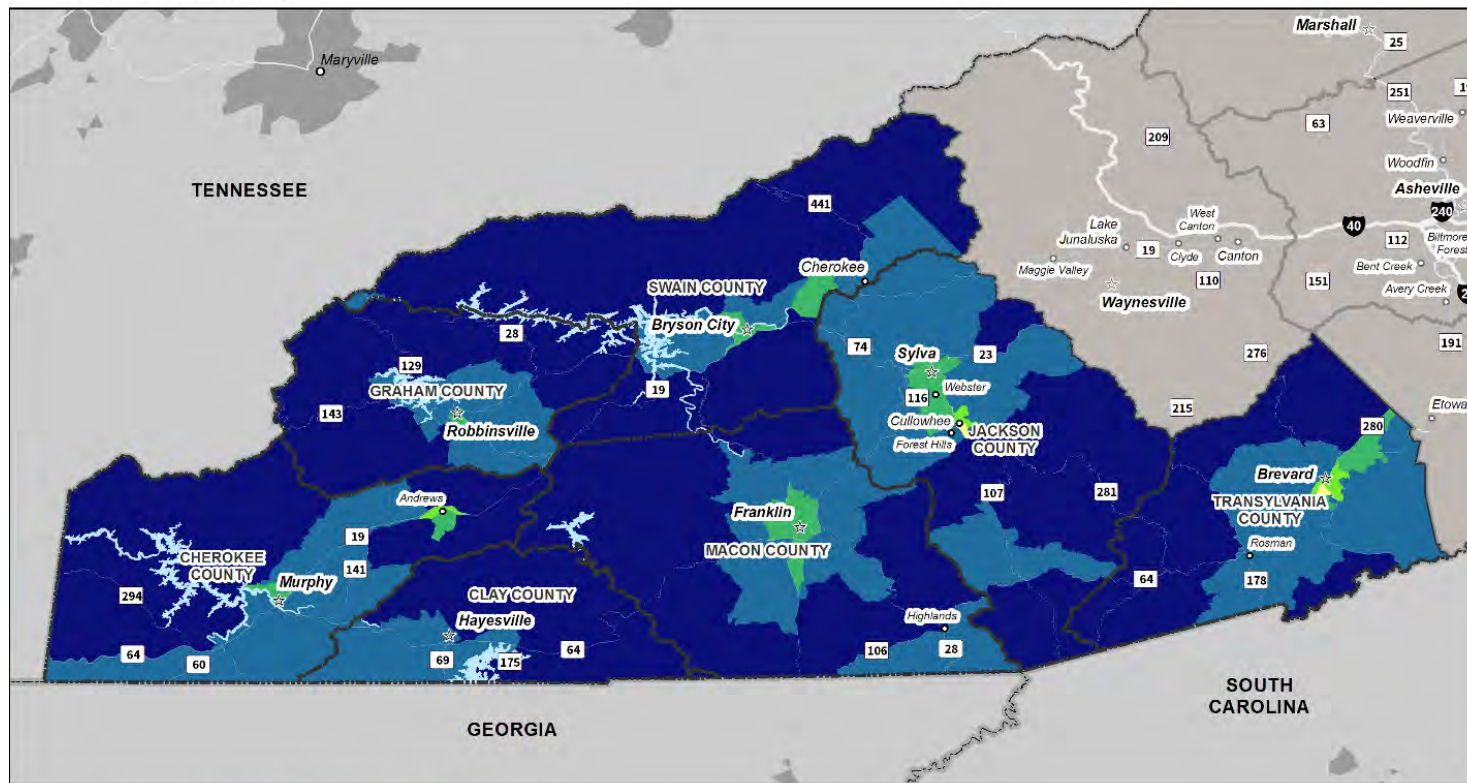
Table A-84: Social Security Offices in the Mountain South Analysis District

Location	County
Franklin	Macon

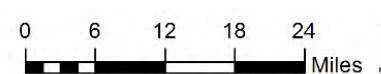


Figure A-11: Map of Population Density of Mountain South Analysis District, American Community Survey, 2015

Mountain South Population Density



Population per Square Mile





Piedmont

The providers in the Piedmont analysis district operate a combination of demand response and fixed-route transit. The two largest providers in the district – Greensboro Transit Authority and Winston-Salem Transit Authority – together comprise 83 percent of the district's fixed-route ridership and 41 percent of demand response ridership. High Point Transit comprises nine percent of fixed-route ridership in the district. Piedmont Authority for Regional Transportation (PART) addresses inter-county transit through commuter buses and vanpools, accounting for 750,000 unlinked passenger trips. The other seven providers fill in county-level service gaps. Demand response transit is universal throughout the analysis district, yet many county-level providers also have fixed-route service that allows for deviations up to a certain distance from the route.

Three providers are non-profits operating transit in one or more counties. Yadkin Valley Economic Development District, Inc. (YVEDDI) operates demand response and two fixed routes for Davie, Stokes, Surry, and Yadkin Counties. Aging, Disability & Transit Services of Rockingham County operates demand response and fixed-route service for Rockingham County. Regional Coordinated Transportation System (RCATS) operates demand response services for Randolph County as well as Montgomery County, which is part of the Sandhills analysis district.

The following sections, tables, and maps summarize transit services and major destinations in the Piedmont analysis group.



Existing Service Information

Table A-85: Selected NTD Statistics for Piedmont Analysis District Providers, 2015

Provider	Service Area Population	Mode	Ridership ¹⁶		Revenue Hours		Revenue Miles
			Total	Per Capita	Total	Per Capita	Total
Alamance County Transportation Authority	155,258	Demand Response	67,690	0.44	45,429	0.29	647,527
Caswell County Area Transportation System (CATS)	23,174	Demand Response	25,800	1.11	11,314	0.49	286,020
Davidson County Transportation	163,867	Demand Response (Purchased)	81,056	0.49	22,101	0.13	378,562
		Demand Response (Operated)	3,010	0.02	1,145	0.01	16,462
		Fixed-Route Bus	146,448	0.89	8,812	0.05	188,389
Greensboro Transit Authority	279,427	Fixed-Route Bus	4,270,997	15.28	159,584	0.57	2,075,635
		Demand Response	223,915	0.80	102,895	0.37	1,644,187
Guilford County Transportation and Mobility Services (TAMS)	119,305	Demand Response	148,338	1.24	22,191	0.19	400,069
High Point Transit	108,031	Fixed-Route Bus	856,257	7.93	33,301	0.31	467,239
		Demand Response	29,734	0.28	10,203	0.09	109,778
Link Transit	52,241	Fixed-Route Bus	No 2015 NTD Data – Service Began July 2016				
		Demand Response					
Piedmont Authority for Regional Transportation	1,055,138	Vanpool	246,229	0.23	23,096	0.02	1,030,105
		Commuter Bus	511,377	0.48	38,784	0.04	967,720
Regional Coordinated Transportation System (RCATS)	142,370	Demand Response	69,922	0.49	37,789	0.27	603,301
Rockingham County Community Access Transit System (RCATS)	92,300	Demand Response	63,022	0.68	43,175	0.47	709,860
		Fixed-Route Bus	21,627	0.23	7,151	0.08	133,410

¹⁶ Ridership figures are in terms of unlinked passenger trips.



Provider	Service Area Population	Mode	Ridership ¹⁶		Revenue Hours		Revenue Miles
			Total	Per Capita	Total	Per Capita	Total
Winston-Salem Transit Authority	236,642	Fixed-Route Bus	3,240,427	13.69	131,946	0.56	1,537,221
		Demand Response	191,825	0.81	63,734	0.27	876,735
YVEDDI Public Transportation	199,249	Demand Response	99,613	0.50	95,867	0.48	1,663,718
		Fixed-Route Bus	4,800	0.02	5,622	0.03	98,907

Sources: Population: American Community Survey, 2011-2015 5-Year Estimates. Transit Service Data: National Transit Database, Service table, 2015. All transit providers listed reported data to the NTD except Link Transit.

Table A-86: Service Information for Demand Response Providers in the Piedmont Analysis District, 2017

Provider	Service Area	Eligibility	Other Available Services
Alamance County Transportation Authority	In-County	All residents	
	Out-of-County	Medical appointment trips	
Caswell County Area Transportation System (CATS)	In-County	Medical appointments	
	Out-of-County - Danville VA, Roxboro (Person), Reidsville (Rockingham), Burlington (Alamance), Greensboro (Guilford), Eden (Rockingham), Winston-Salem (Forsyth), Chapel Hill (Orange) and Durham (Durham)	Medical appointments	
Davidson County Transportation	In-County		
	Out-of-County	Medicaid eligible clients	
Greensboro Transit Authority	City limits of Greensboro	Certified disabled residents (conditional and temporary disabilities accepted)	
Guilford County Transportation and Mobility Services (TAMS)	In-County	Medical appointments, employment, education, senior services, nutrition sites and adult day care.	Shepherd's Center of Greensboro, Senior Resources of Guilford
	Out-of-County – destinations unknown		



Provider	Service Area	Eligibility	Other Available Services
High Point Transit	City limits of High Point	Certified disabled residents and residents over 70 years old	Guilford County serves Medicaid residents who are not eligible for High Point Transit
Link Transit	Only within service area of the fixed route	Certified disabled residents	Veterans' Affairs
Regional Coordinated Transportation System (RCATS)	City limits of Asheboro, Troy, County limits of Randolph and Montgomery	All residents	PART operates limited service into Randolph County
Rockingham County Community Access Transit System (RCATS)	In-County	All residents	
	Out-of-County - provided by Pelham Transportation, A Safe Hands Transportation and CJ Medical Transportation		
Winston-Salem Transit Authority	¾ of a mile outside the entire fixed route area	Elderly, disabled, or Medicaid client residents in Winston-Salem/Forsyth County	
YVEDDI Public Transportation	In-County	All residents	
	Out-of-County	All residents	

Sources: Provider websites, Coordinated Transportation Plans, interviews with provider representatives.

Table A-87: Service Information for Fixed-Route Providers in the Piedmont Analysis District, 2017

Provider	Fixed Routes	Deviated Fixed Routes
Davidson County Transportation	0	3
Greensboro Transit Authority	29	0
High Point Transit	13	0
Link Transit	5	0
Piedmont Authority for Regional	15	0
Rockingham County Community	0	6
Winston-Salem Transit Authority	30	0
YVEDDI Public Transportation	1	1

Sources: Provider websites and interviews with provider representatives.



Major Destinations

Table A-88: Degree Granting Junior Colleges, Colleges, Universities and Professional Schools in the Piedmont Analysis District, 2016

Name	City	County	Type	Total Enrolled	Total Employed
Alamance Community College	Graham, Burlington	Alamance	Junior College	4,666	704
Elon University	Elon	Alamance	University	6,029	1,323
Piedmont Community College – Caswell County Campus	Yanceyville	Caswell	Junior College	1,805	354
Davidson County Community College	Thomasville	Davidson	Junior College	4,159	664
	Mocksville	Davie			
Winston-Salem State University	Winston-Salem	Forsyth	University	5,678	1,052
University of North Carolina School of The Arts	Winston-Salem	Forsyth	University	880	440
Piedmont International University	Winston-Salem	Forsyth	University	372	75
Salem College	Winston-Salem	Forsyth	College	1,167	243
Wake Forest University	Winston-Salem	Forsyth	University	7,426	6,807
Carolina Christian College	Winston-Salem	Forsyth	College	63	16
Forsyth Technical Community College	Winston-Salem, Kernersville	Forsyth	Junior College	9,762	1,564
	King, Walnut Cove	Stokes			
Laurel University	High Point	Guilford	University	344	25
Guilford Technical Community College	Jamestown	Guilford	Junior College	14,290	933
High Point University	High Point	Guilford	University	4,264	713
Virginia College-Greensboro	Greensboro	Guilford	College	468	73
South University-High Point	High Point	Guilford	University	249	49
ITT Technical Institute - High Point	High Point	Guilford	Junior College	456	80
Guilford College	Greensboro	Guilford	College	2,462	458
North Carolina A&T State University	Greensboro	Guilford	University	10,633	2,100
University of North Carolina at Greensboro	Greensboro	Guilford	University	18,175	2,835
Bennett College for Women	Greensboro	Guilford	College	707	231
Greensboro College	Greensboro	Guilford	College	1,119	273



Name	City	County	Type	Total Enrolled	Total Employed
Randolph Community College	Asheboro	Randolph	Junior College	2,990	505
Rockingham Community College	Wentworth	Rockingham	Junior College	2,254	390
Surry Community College	Dobson, Elkin, Pilot Mountain	Surry	Junior College	3,478	944
	Yadkinville	Yadkin			

Source: National Center for Education Statistics, via Department of Homeland Security Homeland Infrastructure Foundation-Level Data portal.

Table A-89: Hospitals in the Piedmont Analysis District, 2017

Name	City	County	Beds
Alamance Regional Medical Center	Burlington	Alamance	238
Lexington Memorial Hospital	Lexington	Davidson	94
Novant Health Thomasville Medical Center	Thomasville	Davidson	149
Davie County Hospital	Mocksville	Davie	81
Novant Health Medical Park Hospital	Winston-Salem	Forsyth	22
North Carolina Baptist Hospital	Winston-Salem	Forsyth	872
Novant Health Forsyth Medical Center	Winston-Salem	Forsyth	919
Kernersville Medical Center-ER	Kernersville	Forsyth	N/A
Moses Cone Memorial Hospital	Greensboro	Guilford	906
High Point Regional Health System	High Point	Guilford	384
Kindred Hospital - Greensboro	Greensboro	Guilford	124
Wesley Long Community Hospital	Greensboro	Guilford	175
Randolph Hospital	Asheboro	Randolph	145
Annie Penn Hospital	Reidsville	Rockingham	110
Morehead Memorial Hospital	Eden	Rockingham	242
Pioneer Community Hospital of Stokes	Danbury	Stokes	93
Northern Hospital of Surry County	Mount Airy	Surry	133
Hugh Chatham Memorial Hospital	Elkin	Surry	93
Yadkin Valley Community Hospital	Yadkinville	Yadkin	22

Source: Department of Homeland Security Homeland Infrastructure Foundation-Level Data portal.



Table A-90: Correctional Facilities in the Piedmont Analysis District, 2017

Name	Facility Type	City	County	Population
Caswell Correctional Center	State	Blanch	Caswell	480
Dan River Prison Work Farm	State	Blanch	Caswell	484
Davidson Correctional Center	State	Lexington	Davidson	256
Forsyth Correctional Center	State	Winston-Salem	Forsyth	244
Randolph Correctional Center	State	Asheboro	Randolph	224

Source: Department of Homeland Security Homeland Infrastructure Foundation-Level Data portal.

Table A-91: County Seats in the Piedmont Analysis District

County Seat	County
Asheboro	Randolph
Danbury	Stokes
Dobson	Surry
Graham	Alamance
Greensboro	Guilford
Lexington	Davidson
Mocksville	Davie
Wentworth	Rockingham
Winston-Salem	Forsyth
Yadkinville	Yadkin
Yanceyville	Caswell

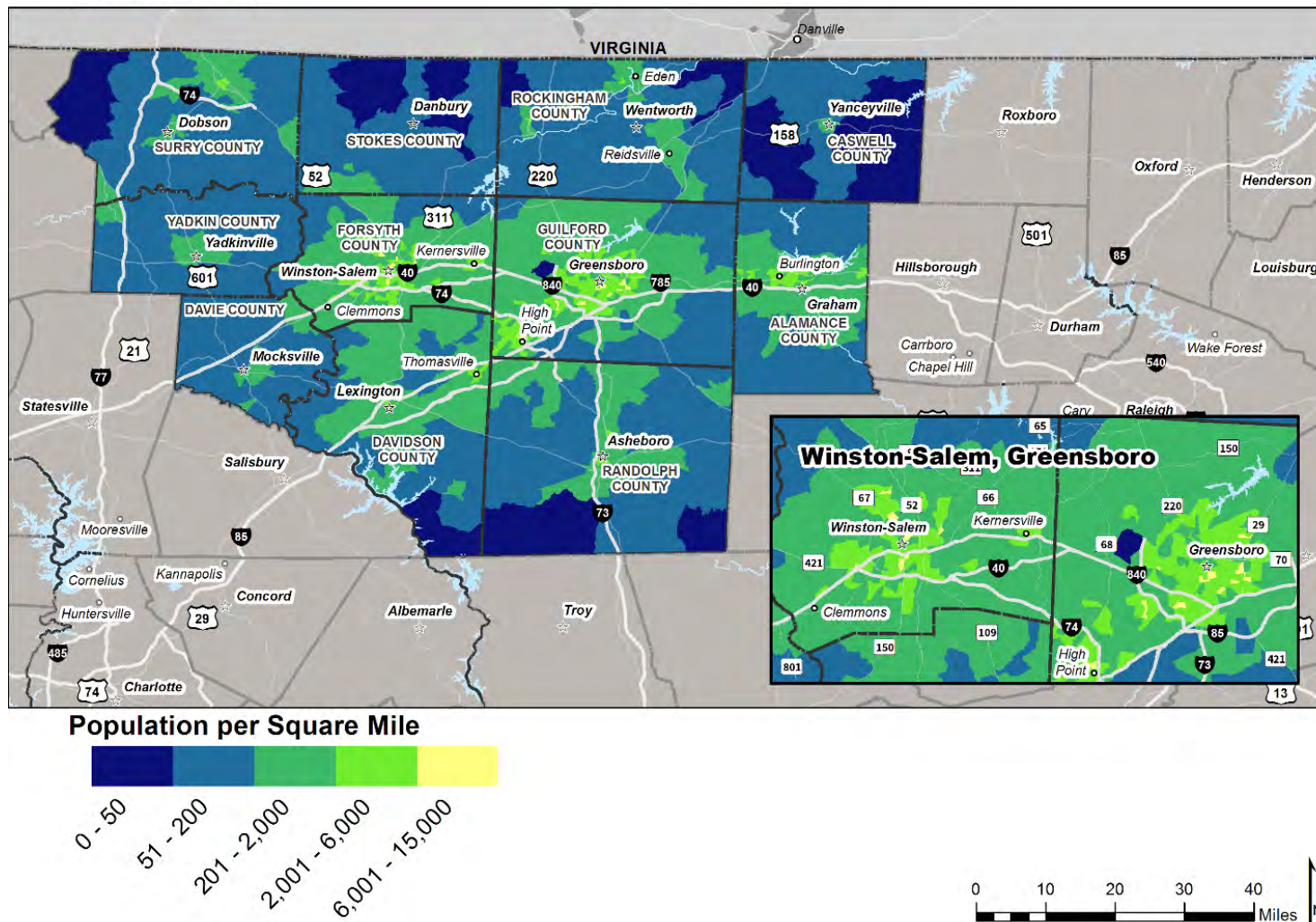
Table A-92: Social Security Offices in the Piedmont Analysis District

Location	County
Asheboro	Randolph
Greensboro	Guilford
Mount Airy	Surry
Reidsville	Rockingham
Winston-Salem	Forsyth



Figure A-12: Map of Population Density of Piedmont Analysis District, American Community Survey, 2015

Piedmont
Population Density





Sandhills

The Sandhills analysis district has six transit providers, all of which provide demand response services. Regional Coordinated Area Transportation System (RCATS) provides demand response service to Montgomery County in the Sandhills analysis district and Randolph County in the Piedmont analysis district. The other five providers each serve one county and provide both in-county and out-of-county trips. Many providers only serve out-of-county trips for medical appointments, and on average, 29 percent of demand response trips in the analysis district are Medicaid-funded.

Only one provider has fixed-route bus service as of 2017. Scotland County Area Transit System has two fixed bus routes in Laurinburg, which together provided almost 9,000 trips in 2015.

The following sections, tables, and maps summarize transit services and major destinations in the Sandhills analysis district.

Existing Service Information

Table A-93: Selected NTD Statistics for Sandhills Analysis District Providers, 2015

Provider	Service Area Population	Mode	Ridership ¹⁷		Revenue Hours		Revenue Miles
			Total	Per Capita	Total	Per Capita	Total
Anson County Transportation System (ACTS)	26,135	Demand Response	34,624	1.32	18,758	0.72	386,588
Area of Richmond Transit (ART)	46,046	Demand Response	39,267	0.85	17,818	0.39	326,648
Hoke Area Transit Service (H.A.T.S.)	51,075	Demand Response	60,230	1.18	20,792	0.41	443,334
		Fixed-Route Bus ¹⁸	28,078	0.55	2,063	0.04	44,066
Moore County Transportation Services	91,743	Demand Response	36,927	0.40	27,620	0.30	544,989
Regional Coordinated Transportation System (RCATS)	142,370	Demand Response	69,922	0.49	37,789	0.27	603,301
Scotland County Area Transit System	35,932	Demand Response	17,978	0.50	8,000	0.22	139,708
		Fixed-Route Bus	8,832	0.25	4,024	0.11	45,661

¹⁷ Ridership figures are in terms of unlinked passenger trips.

¹⁸ Fixed-route bus service has been discontinued per the HATS website.



Sources: Population: American Community Survey, 2011-2015 5-Year Estimates. Transit Service Data: National Transit Database, Service table, 2015. All transit providers listed reported data to the NTD.

Table A-94: Service Information for Demand Response Providers in the Sandhills Analysis District, 2017

Provider	Service Area	Eligibility	Other Available Services
Anson County Transportation System (ACTS)	In-County	All residents	
	Out-of-County – Richmond County	Medical trips	
Area of Richmond Transit (ART)	In-County	All residents	
	Out-of-County - Moore County, Mt. Gilead, Southern Pines, Chapel Hill, Raleigh, Durham, Charlotte, Waynesboro, and Laurinburg.		
Hoke Area Transit Service (H.A.T.S.)	In-County	All residents	
	Out-of-County – destinations unknown		
Moore County Transportation Services	In-County	Medical, Employment, and Education related trips for Moore County citizens	
	Out-of-County - Biscoe, Chapel Hill, Durham, Fayetteville, Raeford, Raleigh, Sanford, Troy	Medical, Employment, and Education related trips for Moore County citizens	
Regional Coordinated Transportation System (RCATS)	City limits of Asheboro, Troy, County limits of Randolph or Montgomery	All residents	
Scotland County Area Transit System	In-County	60 years or older or Medicaid clients	DSS
	Out-of-County - Moore Regional Hospital, UNC Chapel Hill Medical Center, and Duke Medical Center	Medical trips	

Sources: Provider websites, Coordinated Transportation Plans, Interviews with provider representatives.



Table A-95: Service Information for Fixed-Route Providers in the Sandhills Analysis District, 2017

Provider	Fixed Routes	Deviated Fixed Routes
Scotland County Area Transit System	2	0

Sources: Provider website and interviews with provider representatives.

Major Destinations

Table A-96: Degree Granting Junior Colleges, Colleges, Universities and Professional Schools in the Sandhills Analysis District, 2016

Name	City	County	Type	Total Enrolled	Total Employed
South Piedmont Community College	Polkton	Anson	Junior College	2,597	417
Montgomery Community College	Troy	Montgomery	Junior College	837	179
Sandhills Community College	Pinehurst	Moore	Junior College	4,191	699
Richmond Community College	Hamlet	Richmond	Junior College	2,525	329
St. Andrews University	Laurinburg	Scotland	University	489	189

Source: National Center for Education Statistics, via Department of Homeland Security Homeland Infrastructure Foundation-Level Data portal.

Table A-97: Hospitals in the Sandhills Analysis District, 2017

Name	City	County	Beds
Firsthealth Montgomery Memorial Hospital	Troy	Montgomery	37
Firsthealth Moore Reg. Hosp. And Pinehurst Treatment	Pinehurst	Moore	372
Firsthealth Richmond Memorial Hospital	Rockingham	Richmond	99
Sandhills Regional Medical Center	Hamlet	Richmond	64
Scotland Memorial Hospital and Edwin Morgan Center	Laurinburg	Scotland	104

Source: Department of Homeland Security Homeland Infrastructure Foundation-Level Data portal.



Table A-98: Correctional Facilities in the Sandhills Analysis District, 2017

Name	Facility Type	City	County	Population
Brown Creek Correctional Institution	State	Polkton	Anson	1,213
Lanesboro Correctional Institution	State	Polkton	Anson	1,343
Hoke Correctional Institution	State	McCain	Hoke	515
Southern Correctional Institution	State	Troy	Montgomery	628
Morrison Correctional Institution	State	Hoffman	Richmond	689
Scotland Correctional Institution	State	Laurinburg	Scotland	1,609

Source: Department of Homeland Security Homeland Infrastructure Foundation-Level Data portal

Table A-99: County Seats in the Sandhills Analysis District

County Seat	County
Carthage	Moore
Laurinburg	Scotland
Raeford	Hoke
Rockingham	Richmond
Troy	Montgomery
Wadesboro	Anson

Table A-100: Social Security Offices in the Sandhills Analysis District

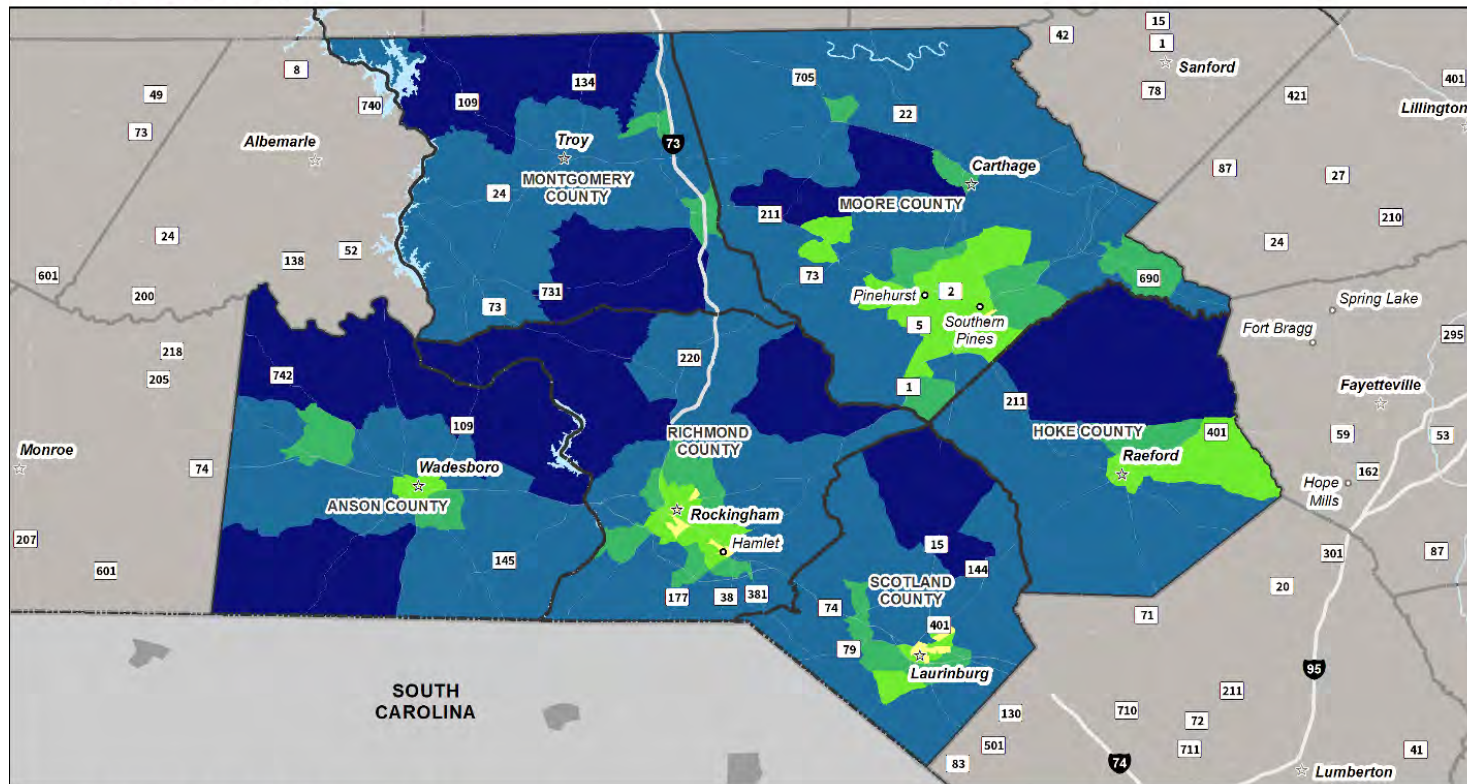
Location	County
Rockingham	Richmond



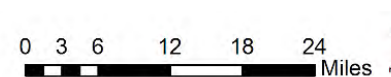
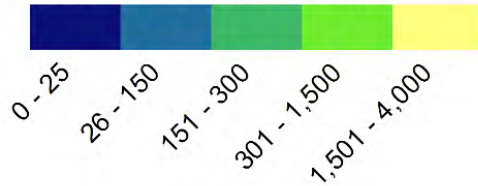
Figure A-13: Map of Population Density of Sandhills Analysis District, American Community Survey, 2015

Sandhills

Population Density



Population per Square Mile





Triangle

The Triangle analysis district includes a mix of urban, suburban, and rural communities that are served by a diverse set of transit options that include fixed-route bus, demand response (paratransit and general population serving), and vanpool services.

GoCary, GoDurham, GoRaleigh, and GoTriangle, are the component agencies that comprise the larger GoTransit system, recently rebranded to share uniform names and similar printed materials. These four systems provide fixed-route bus service and paratransit within $\frac{3}{4}$ of a mile from bus routes, and work together to facilitate easy transfers between services. GoCary also provides a broader demand response transit service that connects senior and disabled residents to larger cities for medical and employment trips. Chapel Hill Transit is also part of the GoTransit system but has not rebranded to match the other providers. These five providers delivered a combined 20 million trips in 2015.

Six demand response providers serve rural residents of the Triangle analysis district. Johnston County Area Transit System (JCATS) provides out-of-county trips to destinations both inside and outside of the Triangle analysis district, which increases access to services and employment for its residents that live closer to cities outside of the Triangle area.

The following sections, tables, and maps summarize transit services and major destinations in the Triangle analysis district.



Existing Service Information

Table A-101: Selected NTD Statistics for Triangle Analysis District Providers, 2015

Provider	Service Area Population	Mode	Ridership ¹⁹		Revenue Hours		Revenue Miles
			Total	Per Capita	Total	Per Capita	Total
Chapel Hill Transit	108,683	Demand Response	53,438	0.49	21,553	0.20	262,353
		Fixed Route	6,531,609	60.10	154,855	1.42	1,775,953
		Fixed Route (Purchased)	2,335	0.02	625	0.01	15,239
Chatham Transit Network	67,431	Demand Response	71,882	1.07	43,519	0.65	986,268
Community Transportation Program (CTP)	324,603	Demand Response	40,019	0.12	15,454	0.05	415,146
County of Lee Transit System (COLTS)	59,418	Demand Response	59,220	1.00	27,760	0.47	439,008
		Fixed Route	4,007	0.07	2,229	0.04	24,717
Fayetteville Area System of Transit (FAST)	202,521	Fixed Route	1,577,718	7.79	85,947	0.42	1,094,136
		Demand Response	59,916	0.30	29,273	0.14	456,482
GoCary	151,186	Demand Response	38,266	0.25	24,509	0.16	369,847
		Fixed Route	278,701	1.84	35,200	0.23	529,617
GoDurham	246,084	Fixed Route	6,157,572	25.02	192,158	0.78	2,537,706
		Demand Response	203,166	0.83	91,916	0.37	1,583,681
GoRaleigh	432,520	Demand Response Taxi	326,801	0.76	248,757	0.58	2,508,226
		Fixed Route	5,667,736	13.10	231,528	0.54	2,992,720
GoTriangle	347,602	Vanpool	310,394	0.89	29,318	0.08	1,050,463
		Fixed Route	1,663,148	4.78	106,687	0.31	2,155,248
		Fixed Route (Purchased)	180,587	0.52	21,795	0.06	476,178
		Demand Response	34,919	0.10	21,901	0.06	498,277
Harnett Area Rural Transit System (HARTS)	124,320	Demand Response	57,397	0.46	48,345	0.39	933,810

¹⁹ Ridership figures are in terms of unlinked passenger trips.



Provider	Service Area Population	Mode	Ridership ¹⁹		Revenue Hours		Revenue Miles
			Total	Per Capita	Total	Per Capita	Total
Johnston County Area Transit System (JCATS)	178,396	Demand Response	101,397	0.57	63,301	0.35	1,199,633
Orange Public Transportation	29,961	Demand Response	40,570	1.35	13,193	0.44	247,565
		Fixed Route	15,935	0.53	2,622	0.09	63,752
Wake Coordinated Transportation Services (WCTS/TRACS)	295,437	Demand Response	178,407	0.60	104,805	0.35	2,341,152
Wolfline Campus Transit	432,520	Fixed Route	3,149,045	7.28	72,237	0.17	728,930

Sources: Population: American Community Survey, 2011-2015 5-Year Estimates. Transit Service Data: National Transit Database, Service table, 2015. All transit providers listed reported data to the NTD.



Table A-102: Service Information for Demand Response Providers in the Triangle Analysis District, 2017

Provider	Service Area	Eligibility	Other Available Services
Chapel Hill Transit	3/4 mile of fixed route	Certified disabled residents	
Chatham Transit Network	In-County	All residents	
	Out-of-County - Chapel Hill	All residents	
Community Transportation Program (CTP)	In-County	All residents	DSS
County of Lee Transit System (COLTS)	In-County	All residents	
	Out-of-county - destinations unknown		
Fayetteville Area System of Transit	3/4 mile from fixed route	Certified disabled residents	
GoCary	In-Area	Over 60 years old or disabled	
	Out-of-Area - Raleigh, Durham, Chapel Hill, Apex, Morrisville	Over 60 years old or disabled - medical or employment trips only	
GoDurham	Durham + 3/4 mile from fixed route	Certified disabled residents	Durham County Access
GoRaleigh	3/4 mile from fixed route	Disabled residents (functional assessment)	
GoTriangle	3/4 mile from all-day fixed route	Certified disabled residents and visitors	
Harnett Area Rural Transit System (HARTS)	In-County	All residents	
	Out-of-county - destinations unknown	Medical appointments	
Johnston County Area Transit System (JCATS)	In-County	All residents	
	Out-of-County - Chapel Hill, Dunn, Durham, Fuquay Varina, Goldsboro, Greenville, Kinston, Newton Grove, Wilson, Raleigh	All residents	
Orange Public Transportation	3/4 mile of fixed route	Certified disabled residents	DSS/Department of Aging
Wake Coordinated Transportation Services (WCTS/TRACS)	Non-urbanized Wake County	Residents of Wake County residing in non-urbanized areas	
	Out-of-county - destinations unknown		

Sources: Provider websites, Coordinated Transportation Plans, Interviews with provider representatives.



Table A-103: Service Information for Fixed-Route Providers in the Triangle Analysis District, 2017

Provider	Fixed Routes	Deviated Fixed Routes
Chapel Hill Transit	31	0
Chatham Transit Network	1	0
Fayetteville Area System of Transit	22	0
GoCary	6	0
GoDurham	16	0
GoRaleigh	28	0
GoTriangle	19	0
Lee County	Reported fixed-route bus to NTD but no information found	
Wolfline Campus Transit	14	0
Orange Public Transportation	2	0
Chapel Hill Transit	31	0

Sources: Provider websites and interviews with provider representatives.

Major Destinations

Table A-104: Degree Granting Junior Colleges, Colleges, Universities and Professional Schools in the Triangle Analysis District, 2016

Name	City	County	Type	Total Enrollment	Total Employment
Apex School of Theology	Durham	Durham	Professional School	766	61
Campbell University	Buies Creek	Harnett	University	5,984	1,266
Carolina College of Biblical Studies	Fayetteville	Cumberland	College	115	24
Central Carolina Community College	Sanford	Lee	Junior College	4,900	1,008
Duke University	Durham	Durham	University	15,386	17,253
Durham Technical Community College	Durham	Durham	Junior College	5,302	816
Fayetteville State University	Fayetteville	Cumberland	University	6,062	901
Fayetteville Technical Community College	Fayetteville	Cumberland	Junior College	10,853	1,412
Grace College of Divinity	Fayetteville	Cumberland	Professional School	132	37
Harrison College-Morrisville	Morrisville	Wake	Junior College	195	33



Name	City	County	Type	Total Enrollment	Total Employment
Heritage Bible College	Dunn	Harnett	College	71	28
ITT Technical Institute-Cary	Cary	Wake	Junior College	350	94
ITT Technical Institute-Durham	Durham	Durham	Professional School	144	34
Johnston Community College	Smithfield	Johnston	Junior College	4,216	697
Living Arts College	Raleigh	Wake	Junior College	618	89
Meredith College	Raleigh	Wake	College	1,947	505
Methodist University	Fayetteville	Cumberland	University	2,313	553
Miller-Motte College-Cary	Cary	Wake	Junior College	393	69
Miller-Motte College-Fayetteville	Fayetteville	Cumberland	Junior College	676	97
Miller-Motte College-Raleigh	Raleigh	Wake	Junior College	529	88
North Carolina Central University	Durham	Durham	University	8,604	1,488
North Carolina State University At Raleigh	Raleigh	Wake	University	34,743	8,392
Saint Augustine's University	Raleigh	Wake	University	1,442	384
Shaw University	Raleigh	Wake	University	2,182	438
Shepherds Theological Seminary	Cary	Wake	Professional School	64	19
Southeastern Baptist Theological Seminary	Wake Forest	Wake	Professional School	2,604	443
Strayer University-North Carolina	Morrisville	Wake	Professional School	3,606	298
The Art Institute of Raleigh-Durham	Durham	Durham	Professional School	762	113
University of North Carolina At Chapel Hill	Chapel Hill	Orange	University	29,278	12,151
University of Phoenix-Raleigh Campus	Raleigh	Wake	University	409	104
Wake Technical Community College	Raleigh	Wake	Junior College	20,340	1,085
William Peace University	Raleigh	Wake	University	630	271

Source: National Center for Education Statistics, via Department of Homeland Security Homeland Infrastructure Foundation-Level Data portal.



Table A-105: Hospitals in the Triangle Analysis District, 2017

Name	City	County	Beds
Betsy Johnson Hospital	Dunn	Harnett	151
Cape Fear Valley Medical Center	Fayetteville	Cumberland	600
Central Carolina Hospital	Sanford	Lee	127
Chatham Hospital, Inc.	Siler City	Chatham	25
Duke Health Raleigh Hospital	Raleigh	Wake	186
Duke Regional Hospital	Durham	Durham	369
Duke University Hospital	Durham	Durham	943
Highsmith-Rainey Memorial Hospital	Fayetteville	Cumberland	66
Johnston Medical Center - Smithfield	Smithfield	Johnston	199
North Carolina Specialty Hospital	Durham	Durham	18
Rex Hospital	Raleigh	Wake	514
University of North Carolina Hospitals	Chapel Hill	Orange	896
VA Medical Center - Durham	Durham	Durham	N/A
VA Medical Center - Fayetteville	Fayetteville	Cumberland	N/A
Wakemed	Raleigh	Wake	870
Wakemed Apex Healthplex	Apex	Wake	N/A
Wakemed Cary Hospital	Cary	Wake	150
Wakemed North Healthplex	Raleigh	Wake	61
Womack Army Medical Center	Fort Bragg	Cumberland	N/A

Source: Department of Homeland Security Homeland Infrastructure Foundation-Level Data portal.



Table A-106: Correctional Facilities in the Triangle Analysis District, 2017

Name	Facility Type	City	County	Population
Chatham Youth Development Center	State	Siler City	Chatham	N/A
Cumberland Regional Juvenile Detention Center	State	Fayetteville	Cumberland	N/A
FCI Butner Medium I	Federal	Butner	Durham	722
FCI Butner Medium I Camp	Federal	Butner	Durham	332
FCI Butner Medium II	Federal	Butner	Durham	1,555
FMC Butner	Federal	Butner	Durham	919
Harnett Correctional Institution	State	Lillington	Harnett	979
Johnston Correctional Institution	State	Smithfield	Johnston	592
Sanford Correctional Center	State	Sanford	Lee	267
Orange Correctional Center	State	Hillsborough	Orange	206
Central Prison	State	Raleigh	Wake	839
North Carolina Correctional Institution for Women	State	Raleigh	Wake	1,612
Wake Correctional Center	State	Raleigh	Wake	401
Wake Regional Juvenile Detention Center	State	Raleigh	Wake	N/A

Source: Department of Homeland Security Homeland Infrastructure Foundation-Level Data portal

Table A-107: County Seats in the Triangle Analysis District

County Seat	County
Durham	Durham
Fayetteville	Cumberland
Hillsborough	Orange
Lillington	Harnett
Pittsboro	Chatham
Raleigh	Wake
Sanford	Lee
Smithfield	Johnston



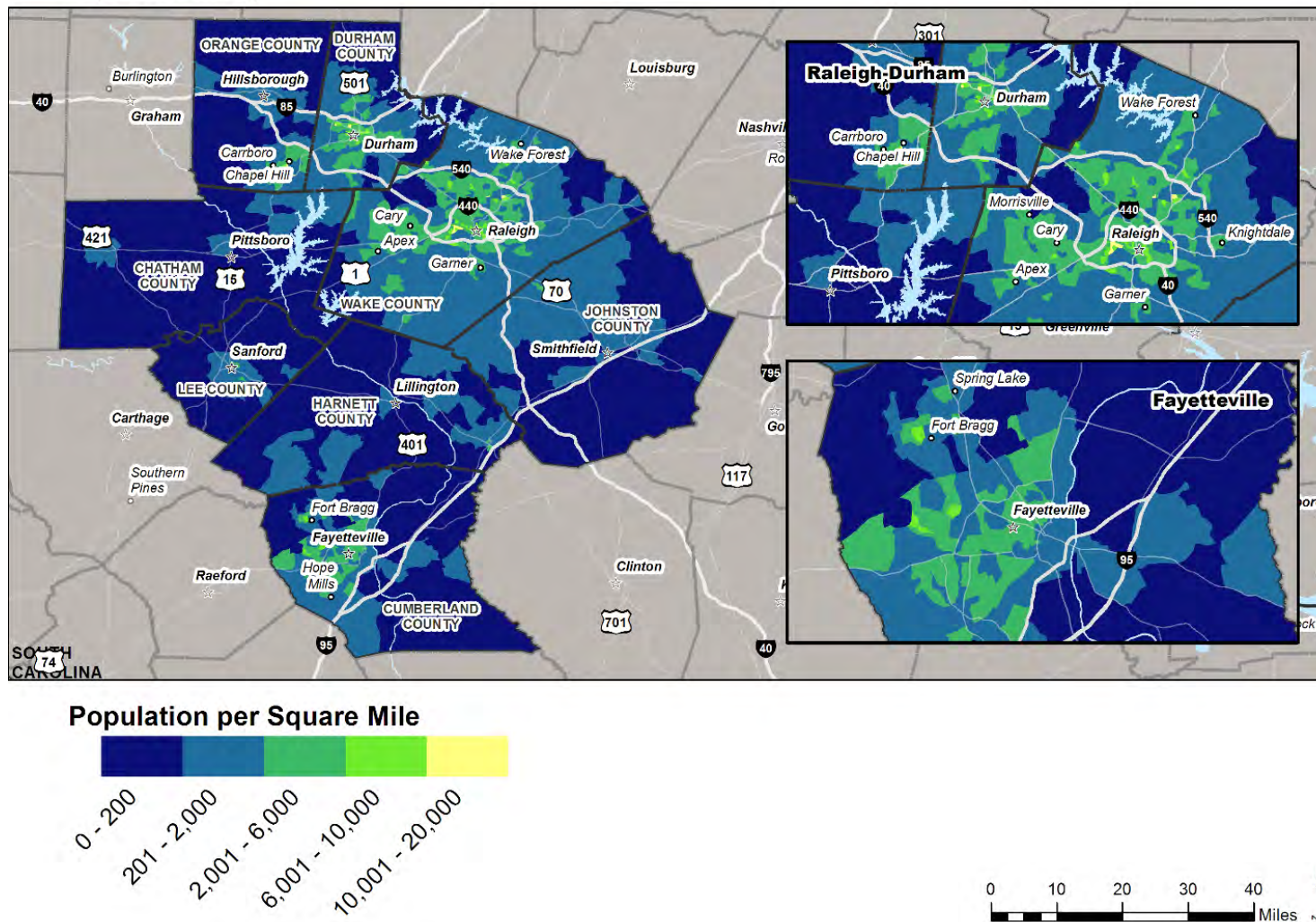
Table A-108: Social Security Offices in the Triangle Analysis District

Location	County
Durham	Durham
Fayetteville	Cumberland
Raleigh	Wake
Sanford	Lee
Smithfield	Johnston



Figure A-14: Map of Population Density of Triangle Analysis District, American Community Survey, 2015

Triangle Population Density





Wilmington

The three providers in the Wilmington analysis district provide demand response, fixed-route bus, and vanpool service. Brunswick Transit System (BTS) and PAS-TRAN provide demand response for all residents and primarily travel to Wilmington for out-of-county trips. Wave Transit provides demand response within its fixed-route bus service area only as paratransit for disabled residents.

Most trips through Brunswick Transit System (BTS) are out-of-county and rider-funded. Among trips paid for by other providers, BTS provides student transportation through a contract with Brunswick Community College. PAS-TRAN provides service for all residents and has a higher percentage of Medicaid-funded trips (40 percent) than BTS (4 percent). Wave Connect Dial-a-Ride Transportation Program (DART), a paratransit service, has the highest percentage of Medicaid-funded trips (87 percent).

Wave Transit fixed-route bus service typically operates on 60-minute headways; however, it does have higher frequency service through its Seahawk Shuttles that serve the University of North Carolina-Wilmington. Wave Transit also provides trips to Pleasure Island on a 3-hour headway. Its vanpool program provides service for 5 to 12 riders per van and delivered almost 7,500 trips in 2015.

The following sections, tables, and maps summarize transit services and major destinations in the Wilmington analysis district.



Existing Service Information

Table A-109: Selected NTD Statistics for Wilmington Analysis District Providers, 2015

Provider	Service Area Population	Mode	Ridership ²⁰		Revenue Hours		Revenue Miles Total
			Total	Per Capita	Total	Per Capita	
Brunswick Transit System (BTS)	115,926	Demand Response	49,363	0.43	14,658	0.13	461,725
Wave Transit	219,957	Fixed Route	1,476,773	6.71	86,981	0.40	1,224,992
		Demand Response	58,253	0.26	22,874	0.10	436,760
		Vanpool	7,468	0.03	1,316	0.01	72,653
PAS-TRAN	55,166	Demand Response	26,845	0.49	17,565	0.32	431,725

Sources: Population: American Community Survey, 2011-2015 5-Year Estimates. Transit Service Data: National Transit Database, Service table, 2015. All transit providers listed reported data to the NTD.

Table A-110: Service Information for Demand Response Providers in the Wilmington Analysis District, 2017

Provider	Service Area	Eligibility	Other Available Services
Brunswick Transit (BTS)	In-area	All residents	Other vendors through DSS
	Out-of-area - New Hanover County	All residents	
PAS-TRAN	In-area	All residents	Kris' Transportation Services, Inc.
	Out-of-area - Wilmington, New Hanover County, Duplin County	All residents	
Wave Connect Dial-a-Ride Transportation Program (DART)	In-area – within ¾ mile of fixed-route bus	Certified disabled residents	Ivory's Accessible Transport Service

Sources: Provider websites, Coordinated Transportation Plans, interviews with provider representatives.

²⁰ Ridership figures are in terms of unlinked passenger trips.



Table A-111: Service Information for Fixed-Route Providers in the Wilmington Analysis District, 2017

Provider	Fixed Routes	Deviated Fixed Routes
Wave Transit	27	0

Source: Provider website.

Major Destinations

Table A-112: Degree Granting Junior Colleges, Colleges, Universities and Professional Schools in the Wilmington Analysis District, 2016

Name	City	County	Type	Total Enrolled	Total Employed
Brunswick Community College	Bolivia	Brunswick	Junior College	1,471	686
Cape Fear Community College	Wilmington	New Hanover	Junior College	9,168	1,212
Miller-Motte College-Wilmington	Wilmington	New Hanover	College	2,232	220
University of North Carolina Wilmington	Wilmington	New Hanover	University	13,733	2,112

Source: National Center for Education Statistics, via Department of Homeland Security Homeland Infrastructure Foundation-Level Data portal.

Table A-113: Hospitals in the Wilmington Analysis District, 2017

Name	City	County	Beds
J. Arthur Doshier Memorial Hospital	Southport	Brunswick	100
Novant Health Brunswick Medical Center	Bolivia	Brunswick	N/A
New Hanover Regional Medical Center	Wilmington	New Hanover	769
New Hanover Regional Medical Center Orthopedic Hospital	Wilmington	New Hanover	N/A
Pender Memorial Hospital	Burgaw	Pender	86

Source: Department of Homeland Security Homeland Infrastructure Foundation-Level Data portal.

Table A-114: Correctional Facilities in the Wilmington Analysis District, 2017

Name	Facility Type	City	County	Population
New Hanover Correctional Center	State	Wilmington	New Hanover	391
New Hanover Regional Juvenile Detention Center	State	Castle Hayne	New Hanover	N/A
Pender Correctional Institution	State	Burgaw	Pender	759

Source: Department of Homeland Security Homeland Infrastructure Foundation-Level Data portal



Table A-115: County Seats in the Wilmington Analysis District

County Seat	County
Bolivia	Brunswick
Burgaw	Pender
Wilmington	New Hanover

Table A-116: Social Security Offices in the Wilmington Analysis District

Location	County
Wilmington	New Hanover



Wilmington





Appendix II – May Geographic Community Workshop Presentation

The following slides were presented to the northeast region of the state during the May workshop series. Presentations given during the May workshop series contained the same selection of slides, except where geographically based information was presented, in which case the slides varied to reflect the local areas participating in the workshop. The localized information can be found in Sections 1 and 2 of the Statewide Public Transportation Strategic Plan Technical Report.

Figure A-16: PowerPoint presentation that were presented to the northeast region of North Carolina during May workshops

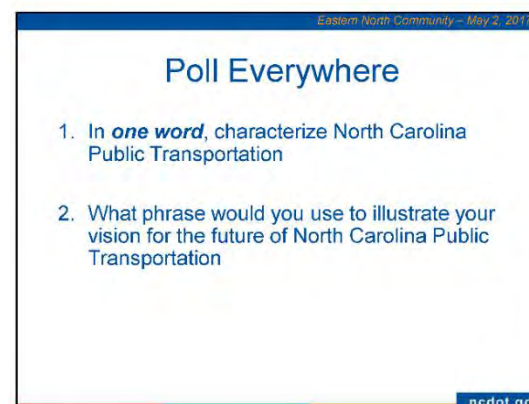
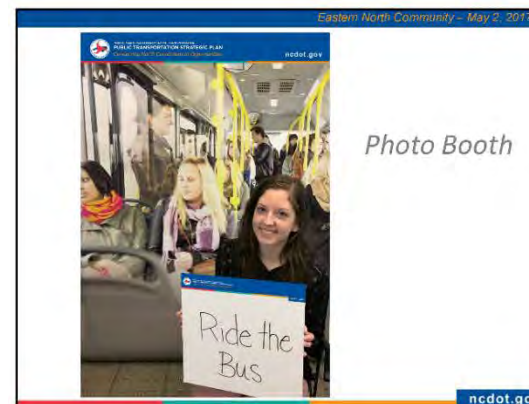




Figure A-16: continued

Eastern North Community – May 2, 2017

Meeting Purpose

- Provide a forum for discussing your ideas and concerns (specific to different geographic areas)
- Discuss a vision and goals for the future of public transportation in North Carolina
- Get a clearer understanding of the current transit situation (overall service, partnerships, etc.)
 - Identify strengths and challenges
 - Identify opportunities/threats
- Identify your priorities

ncdot.gov

Eastern North Community – May 2, 2017

By the end of the meeting we will...

- Have a shared understanding of the challenges and opportunities for North Carolina public transportation
- Discussed vision and goals for the future of public transportation in North Carolina that represents its diverse constituencies
- Considered priorities for the future of transit in North Carolina

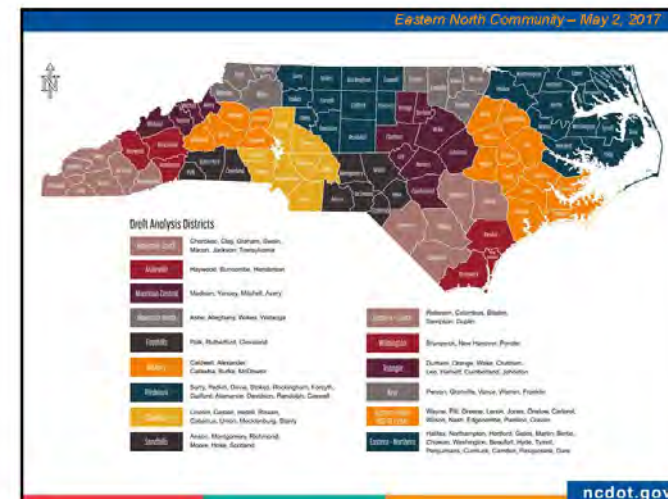
ncdot.gov

Eastern North Community – May 2, 2017

Transit Markets Analysis

- 15 analysis districts for commuting patterns and opportunity analysis
- Work trips are usually the largest trip purpose for most fixed route transit services
- The U.S. Census Longitudinal Employer–Household Dynamics (LEHD) data set can be used to estimate commuting patterns
- High commuting flows within a district may indicate the need for local bus service
- High commuting flows between districts demonstrates the longer distance transit market

7
ncdot.gov





NORTH CAROLINA DEPARTMENT OF TRANSPORTATION
PUBLIC TRANSPORTATION STRATEGIC PLAN
Connecting North Carolinians to Opportunities

Figure A-16: continued

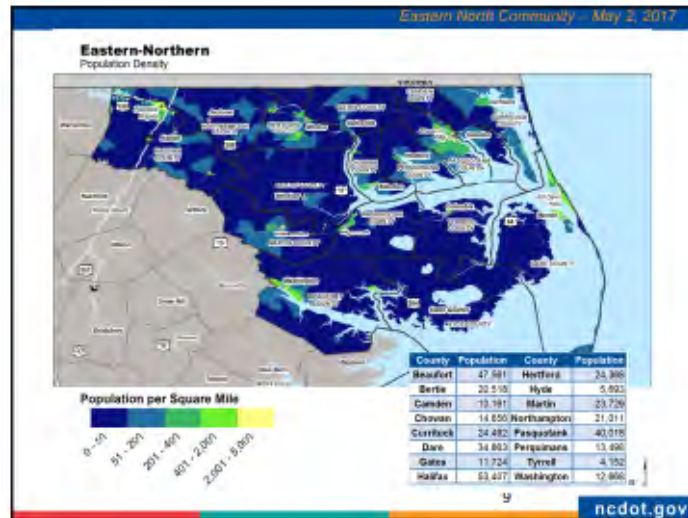




Figure A-16: continued

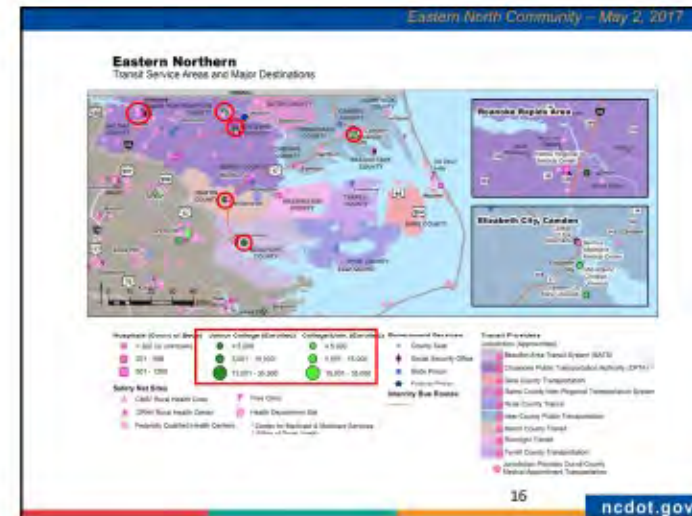
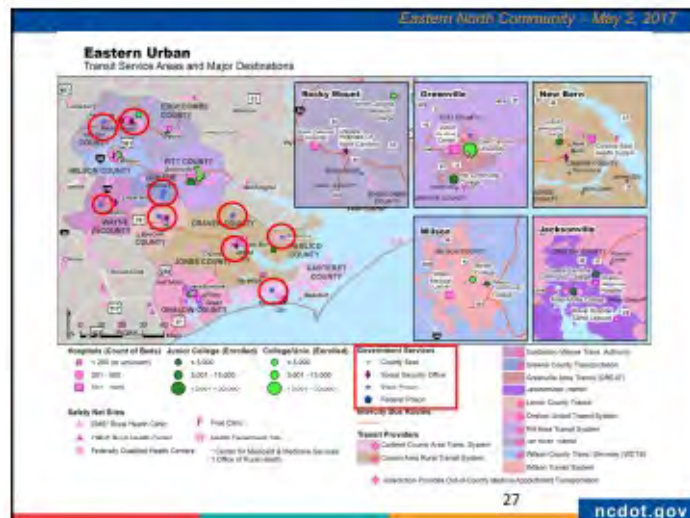
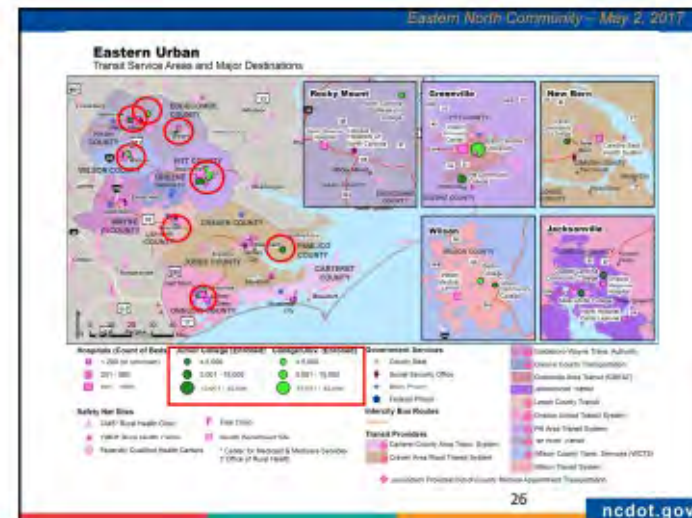
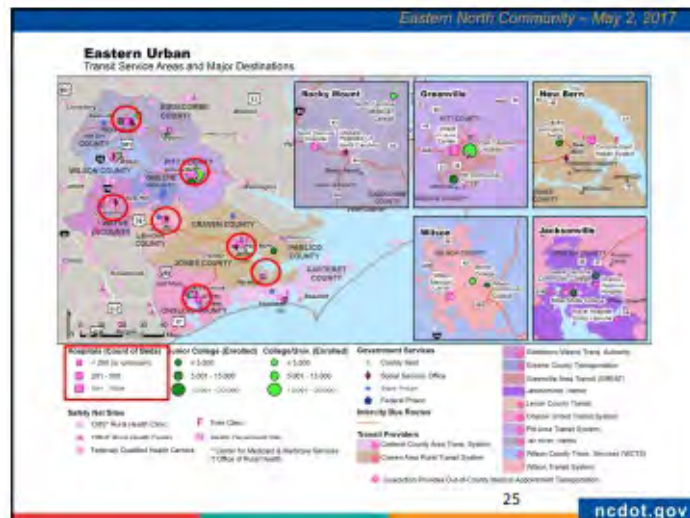




Figure A-16: continued



Eastern North Community – May 2, 2017

Opportunities Analysis – Gap Analysis

- **Potential Opportunities**
 - Expand service between counties
 - Employment trips
 - Education trips
 - Coordinate demand response services
 - Especially in the southern portion of the district
 - Enhance communication strategies for riders
 - Enhance Demand Response services
 - Expand service hours to nights, weekends, holidays
 - Expand eligibility
 - Enhance Fixed-Route services
 - Improve frequency of service
 - Develop marketing and public education tools

28

ncdot.gov



Figure A-16: continued





Figure A-16: continued

Eastern North Community – May 2, 2017

Vision Statement Elements

- Based on feedback at Technical and Executive Committee meetings:
 - Connectivity and freedom
 - Opportunity
 - Quality of life
 - Choices and independence
 - Economic development
 - Community and land use
 - Transportation system capacity
 - Affordable
 - Social justice

33
ncdot.gov

Eastern North Community – May 2, 2017

Missions

- Definition:
 - What are the transit services' fundamental purposes?
 - What is to be accomplished?

34
ncdot.gov

Eastern North Community – May 2, 2017

Potential Missions

- Connect North Carolinians to Opportunities
 - Employment
 - Education
 - Healthcare
 - Recreation
- Improve the State's Quality of Life
 - Support economic development
 - Promote healthy choices
 - Enable independent living
 - Equality of access
- Increase Peak Period Capacity for Major Corridors

35
ncdot.gov

Eastern North Community – May 2, 2017

Potential Markets

- Employment
 - Provide access to both nearby and regional employment centers.
 - Improve citizens' job opportunities and expands employers' access to a skilled workforce.
- Education
 - Expand the reach and effectiveness of the educational system.
 - Provide residents with opportunities for life-long learning
- Medical Services
 - Improve access by patients, employees and visitors to medical facilities and services.
- Recreation / Shopping
 - Improve access to recreation and shopping opportunities.

36
ncdot.gov



Figure A-16: continued

Eastern North Community – May 2, 2017

Potential Markets

- Senior / Paratransit
 - Provide senior citizens and persons with disabilities access to life sustaining activities
 - Access to vital services enabling senior citizens to live at home and avoid expensive long-term skilled medical care facilities.
 - Assist individuals who are unable to drive or use other transit services integrate into the community.

37
ncdot.gov

Eastern North Community – May 2, 2017

Strategies

- What strategies or programs should be considered?

38
ncdot.gov

Eastern North Community – May 2, 2017

Potential Strategies Related to the Division of Highways

- **Intrastate Community Transit Network**
 - Regional and intrastate services across jurisdictional boundaries
 - Connections from rural communities and between urban centers
 - Improved access to jobs, higher education, and medical facilities
- **Safer ADA-Compliant Passenger Crossings**
 - Locate stops where safe crossings can be provided
 - Plan safer crossings with construction projects
 - Transit system, Division of Highways and city traffic staffs must cooperate on identifying and constructing safer crossings
- **Safer ADA-Compliant Transit Stops**
 - Coordinate transit stop improvements with construction projects
 - Improve existing stops with passenger amenities, better lighting and ADA access
- **Integrated Transit, Bicycle and Pedestrian Network**
 - Plan bicycle and pedestrian improvements with a focus on improving transit access
 - Prioritize project selection for joint transit, bicycle and pedestrian projects

39
ncdot.gov

Eastern North Community – May 2, 2017

Potential Strategies Related to the Division of Highways

- **Faster Transit**
 - Bus on Shoulder, Traffic Signal Preemption, Queue Jumper Lanes, HOV / Bus Lanes
 - In the planning process identify corridors where improved transit speeds may increase transit ridership
 - Develop typical transit cross sections
- **Congested Corridor Multimodal Strategies**
 - Corridor plans through MPO planning process
 - Focus on peak period mobility improvements
 - Identify incremental improvements such as park and ride lots and express buses
- **Multimodal Access Plans for New Developments of Statewide Significance**
 - Engage local governments and developers in identifying strategies to reduce single passenger auto use
 - Identify and program transportation network improvements related to new developments
 - Plan for transit, pedestrian and bicycle access to all major developments

40
ncdot.gov



Figure A-16: continued


Eastern North Community - May 2, 2017

Outcomes and Metrics

- How should we measure the effectiveness of the strategies developed through this Plan? Examples:
 - Increase in population and employment accessible by transit
 - Number of communities connected by transit
 - Revenue hours per capita
 - Increase in major medical, educational, employment, and government centers served by transit
 - Dedicated funding
- What data will we need?
- How often should we measure?

41
ncdot.gov

Eastern North Community - May 2, 2017



Break
Photo Booth

ncdot.gov

Eastern North Community - May 2, 2017

Break out session

SWOT Analysis (4 index cards to each participant):

Strengths
The top three services/benefits that NC public transportation provides to me (or the people I serve) are:

Weaknesses
The top three weaknesses of NC public transportation today are:

Challenges (Threats)
What are the organizational / administrative / physical / fiscal challenges for transit today?

Opportunities
What are three areas for improvement in today's transit services?

ncdot.gov

Eastern North Community - May 2, 2017

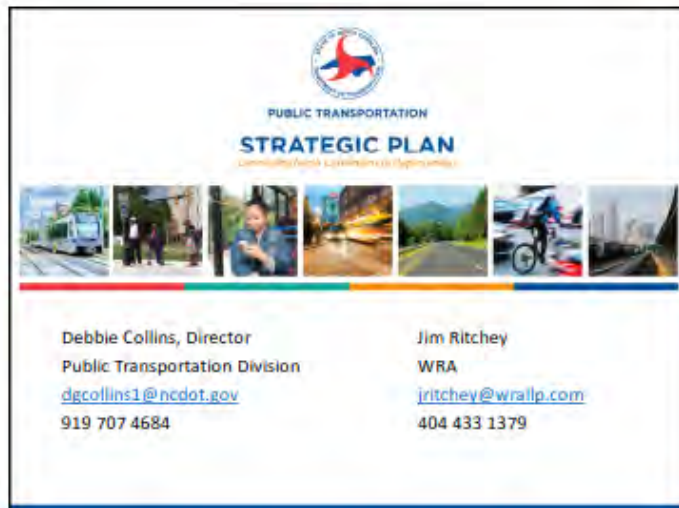
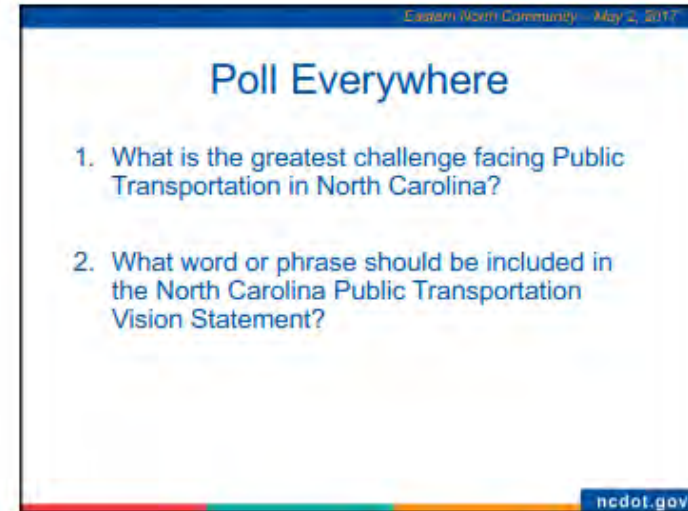
Break out session

- I. Missions – what should the public transportation program provide in your community
- II. Vision – what words that should be part of the vision statement
- III. Strategies – suggest strategies / programs that should be included in the Plan

ncdot.gov



Figure A-16: continued





Appendix III – May Land Use Community Workshop Presentation

Figure A-17: Presentation from May Land Use Community Workshop

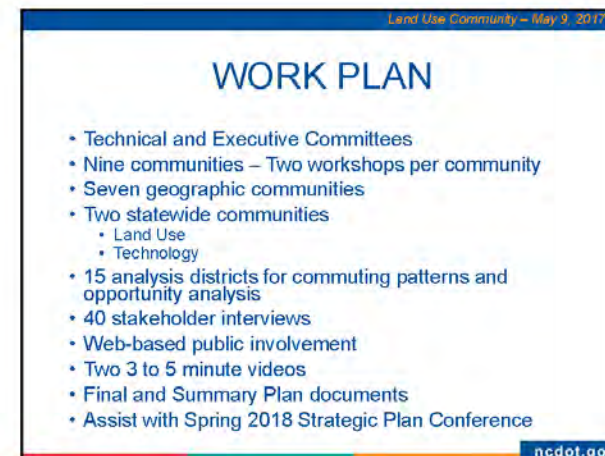
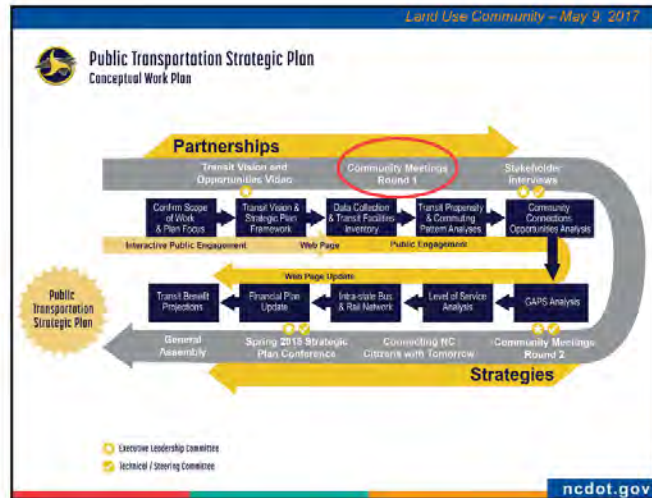




Figure A-17: continued



Land Use Community – May 9, 2017

BIG PICTURE

ISSUES

- Lack of connectedness
- Challenges of serving urban, suburban, and rural areas
- Placemaking and design

OPPORTUNITIES

- Coordination
- Technology and service delivery
- Market for transit-oriented development has not been fully realized in NC

ncdot.gov

Land Use Community – May 9, 2017

TOPICS

- Transit-oriented development through the lens of regional and systems planning
- Supporting transit through placemaking, complete streets, and urban design
- North Carolina land use policy and development regulations

ncdot.gov



Figure A-17: continued

Land Use Community – May 9, 2017



STRATEGIC PLAN MESSAGING |

POLL EVERYWHERE #1

ncdot.gov

Land Use Community – May 9, 2017

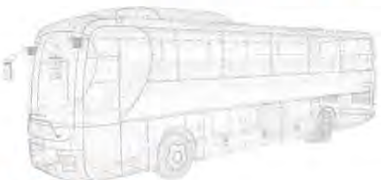
YOUR THOUGHTS

Text One Word:

What word would you use to illustrate your vision for the future of North Carolina Public Transportation

ncdot.gov

Land Use Community – May 9, 2017



PARTICIPANT INTRODUCTIONS |

ncdot.gov

Land Use Community – May 9, 2017

ROLL CALL

- Name
- Affiliation/organization
- What is your group/organization/agency doing with respect to land use and transit issues?



ncdot.gov



Figure A-17: continued

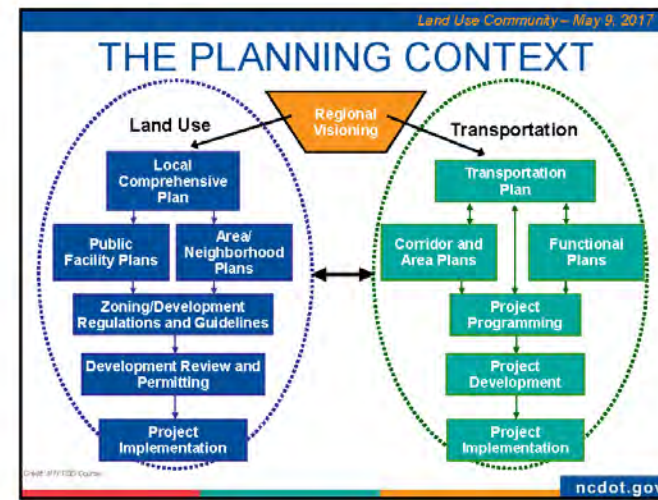
Land Use Community – May 9, 2017



SPEAKERS AND PANEL DISCUSSION |

MODERATED BY JEFF RIEGNER

ncdot.gov



Land Use Community – May 9, 2017

TOPICS

- Transit-oriented development through the lens of regional and systems planning
- Supporting transit through placemaking, complete streets, and urban design
- North Carolina land use policy and development regulations
- *Transit benefits other than increases in ridership*
- *Promoting major transit investments – recent winners and losers*

ncdot.gov

Land Use Community – May 9, 2017

TOPICS

- Transit-oriented development through the lens of regional and systems planning
- Supporting transit through placemaking, complete streets, and urban design
- North Carolina land use policy and development regulations
- *Shouldn't plan in a vacuum*
- *Make the land use-transportation connection*
 - *Interplay between each*
- *Planning systems*
 - *Networks, purpose, outcomes, performance*

ncdot.gov



Figure A-17: continued

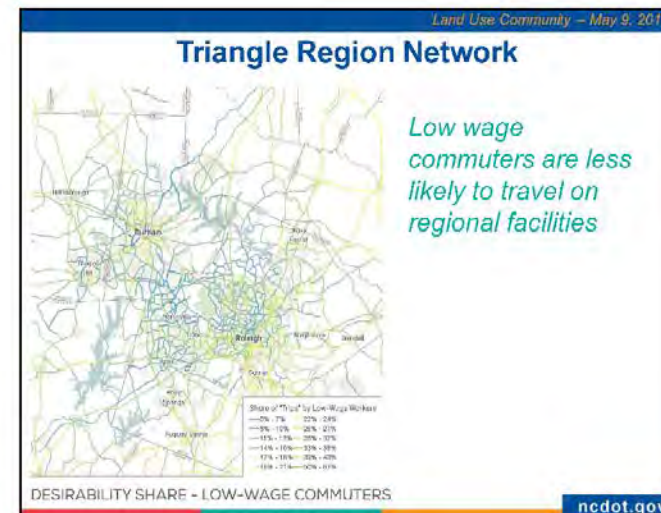
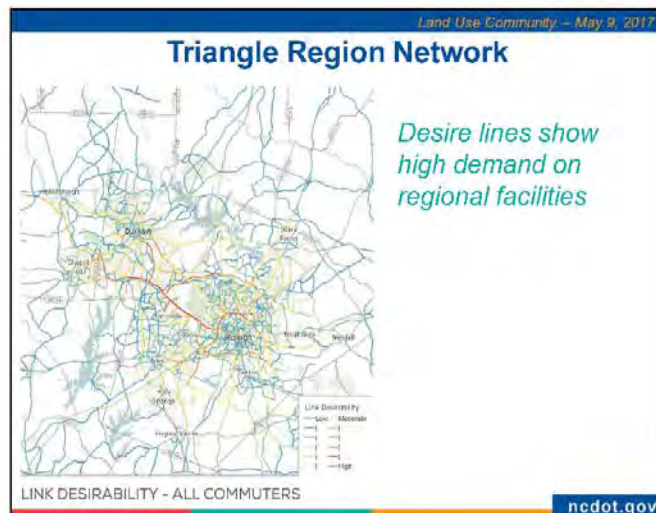
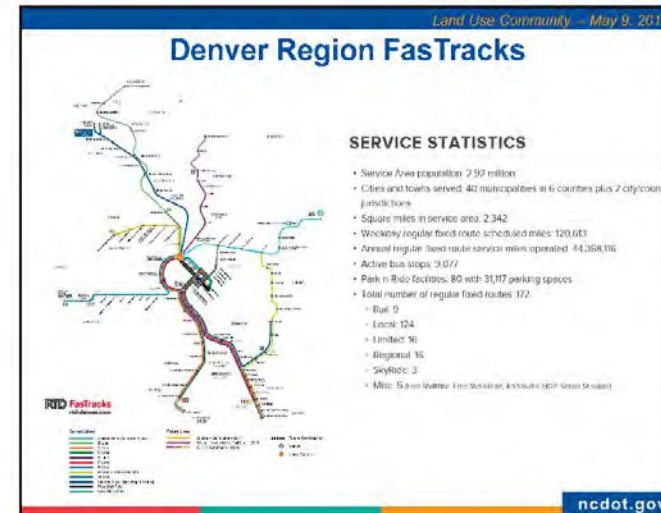
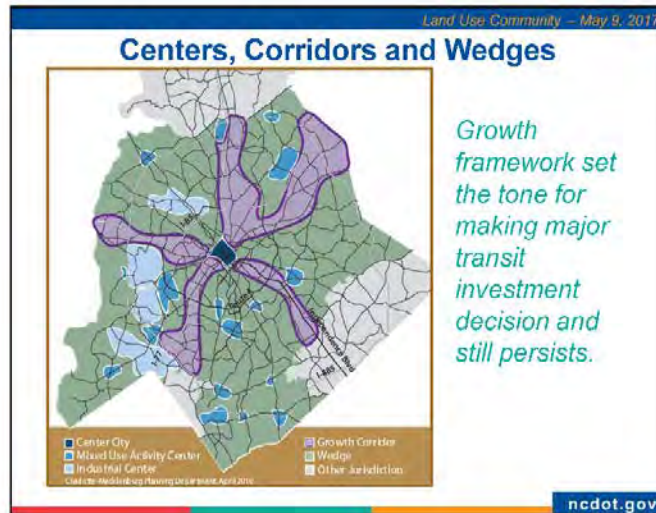




Figure A-17: continued

Land Use Community – May 9, 2017

TOPICS

- Transit-oriented development through the lens of regional and systems planning
- Supporting transit through placemaking, complete streets, and urban design
- North Carolina land use policy and development regulations
- *Transit supportive R.O.W.s*
- *Connecting people to transit corridors*
- *The transit experience doesn't end when you step off the bus, train, etc.*

ncdot.gov

Land Use Community – May 9, 2017

Every rider is a pedestrian at some point



ncdot.gov

Land Use Community – May 9, 2017

Most riders have to cross the street



ncdot.gov

Land Use Community – May 9, 2017

Most riders have to cross the street



ncdot.gov

Figure A-17: continued

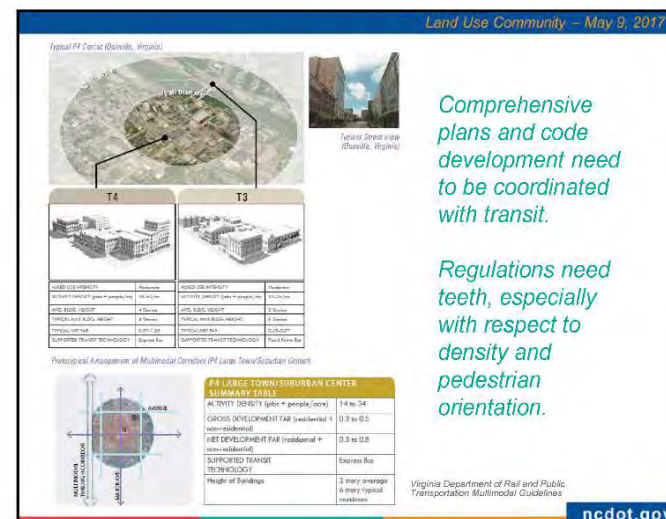




Figure A-17: continued

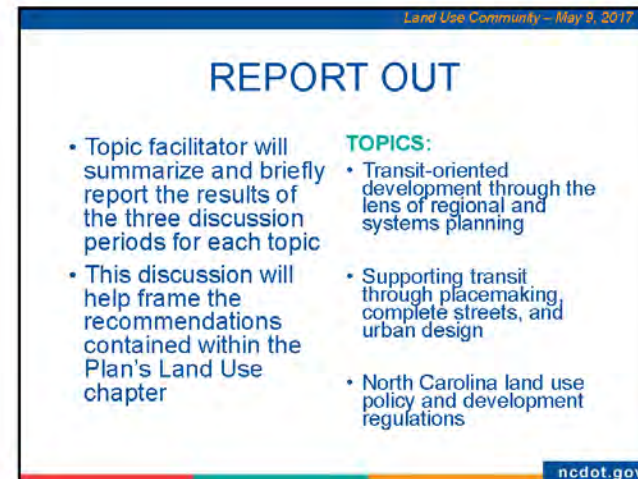
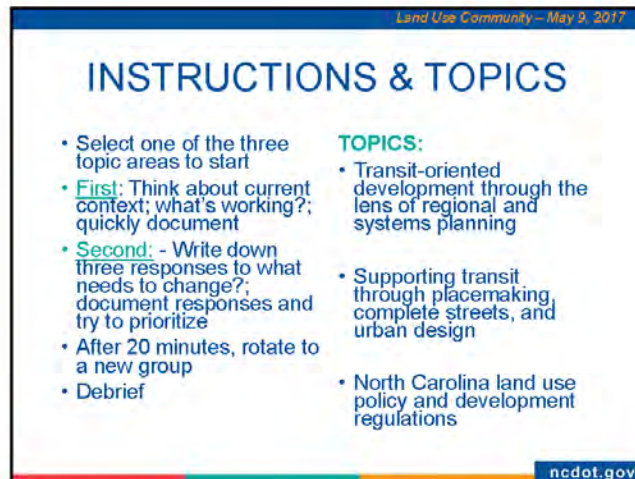
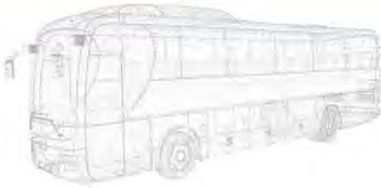




Figure A-17: continued

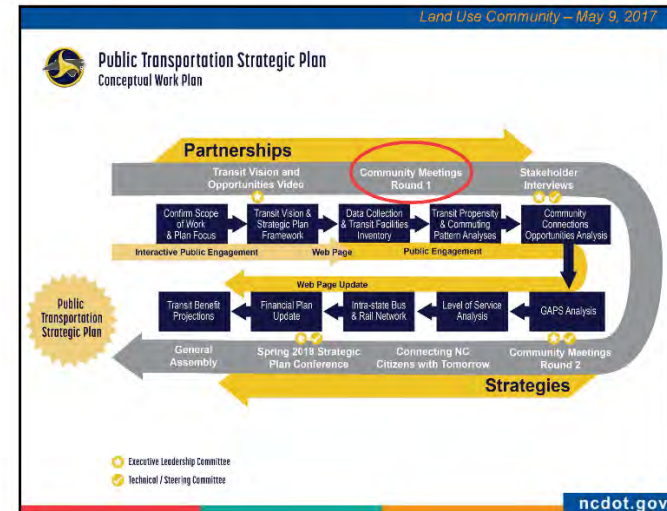
Land Use Community – May 9, 2017



CLOSING REMARKS |

WRAP UP, NEXT STEPS, AND POLL EVERYWHERE #2

ncdot.gov



Land Use Community – May 9, 2017

YOUR THOUGHTS

Poll Everywhere #2
Text Your Reply:

What is the greatest challenge facing Public Transportation in North Carolina? (choose one)

What word should be included in the North Carolina Public Transportation Vision Statement?

ncdot.gov


PUBLIC TRANSPORTATION
STRATEGIC PLAN
Connecting North Carolinians to Opportunities



THANK YOU!

Debbie Collins
dgcollins1@ncdot.gov
919.707.4684

Jim Ritchey
jritchey@wallp.com
404.433.1379



Figure A-18: Presentation Boards from October workshop





Figure A-18: continued

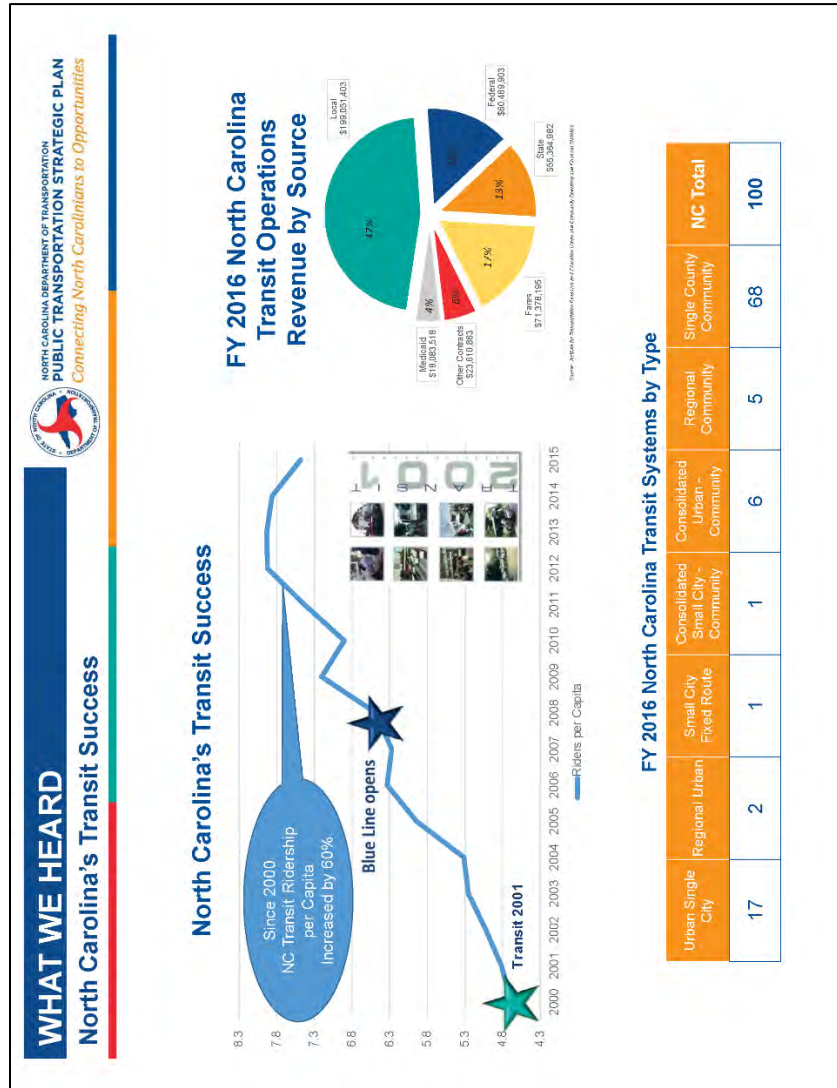




Figure A-18: continued

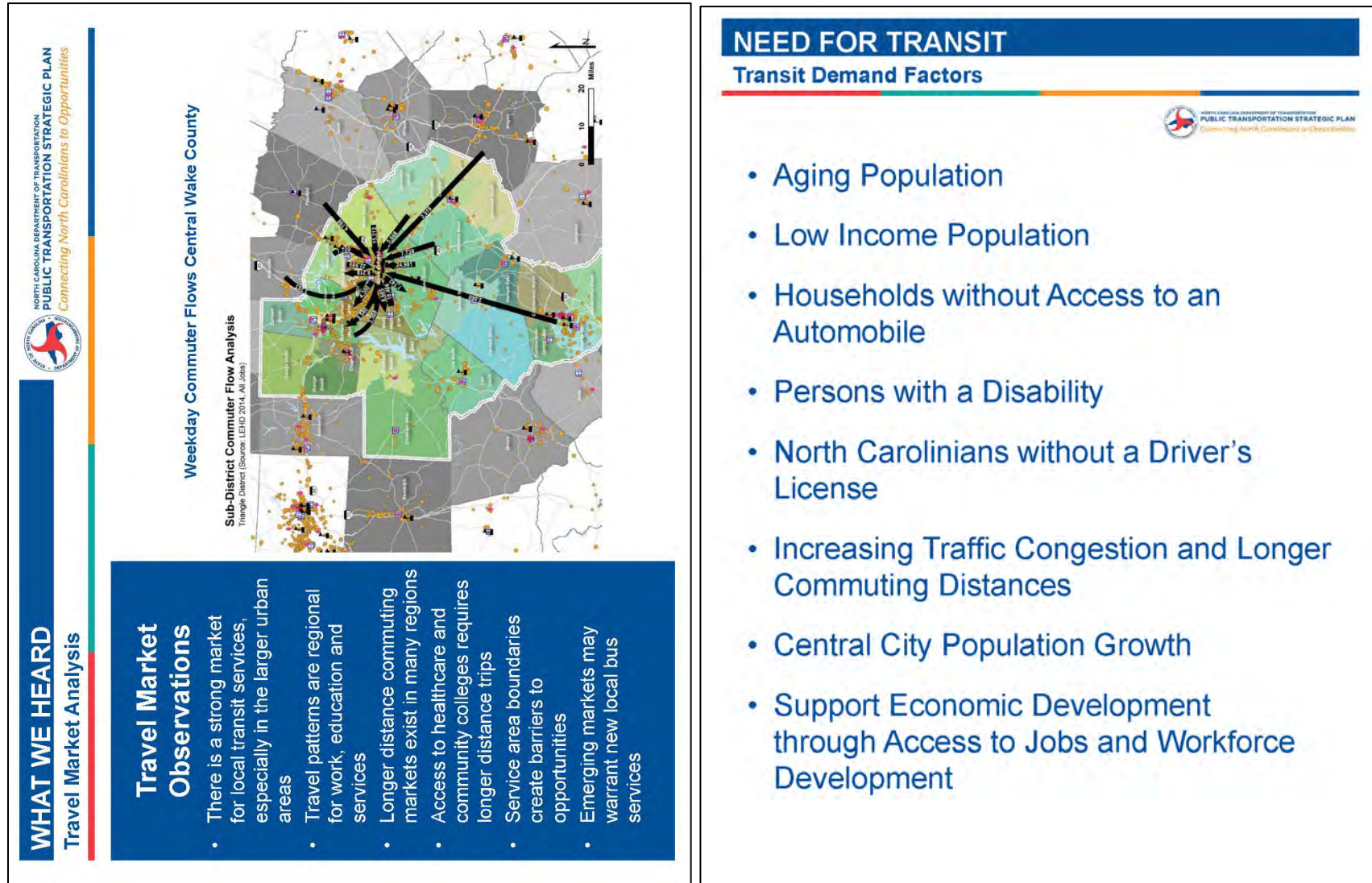




Figure A-18: continued

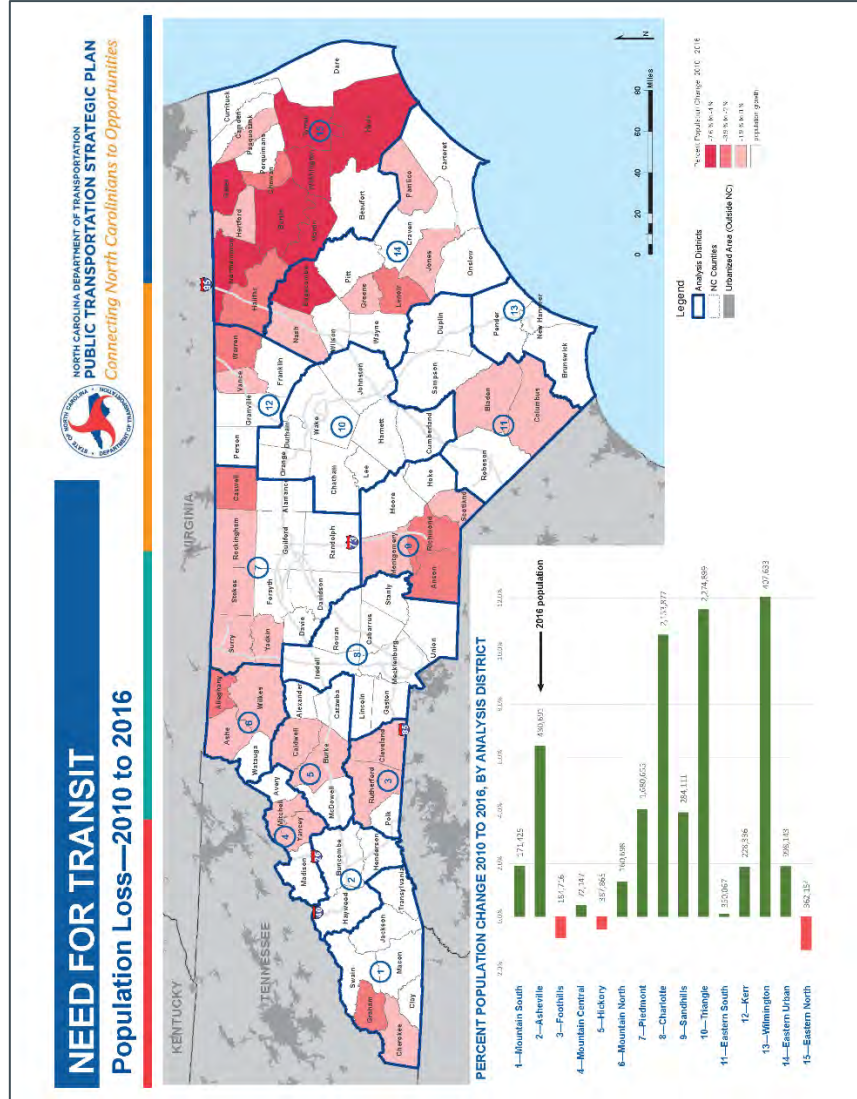
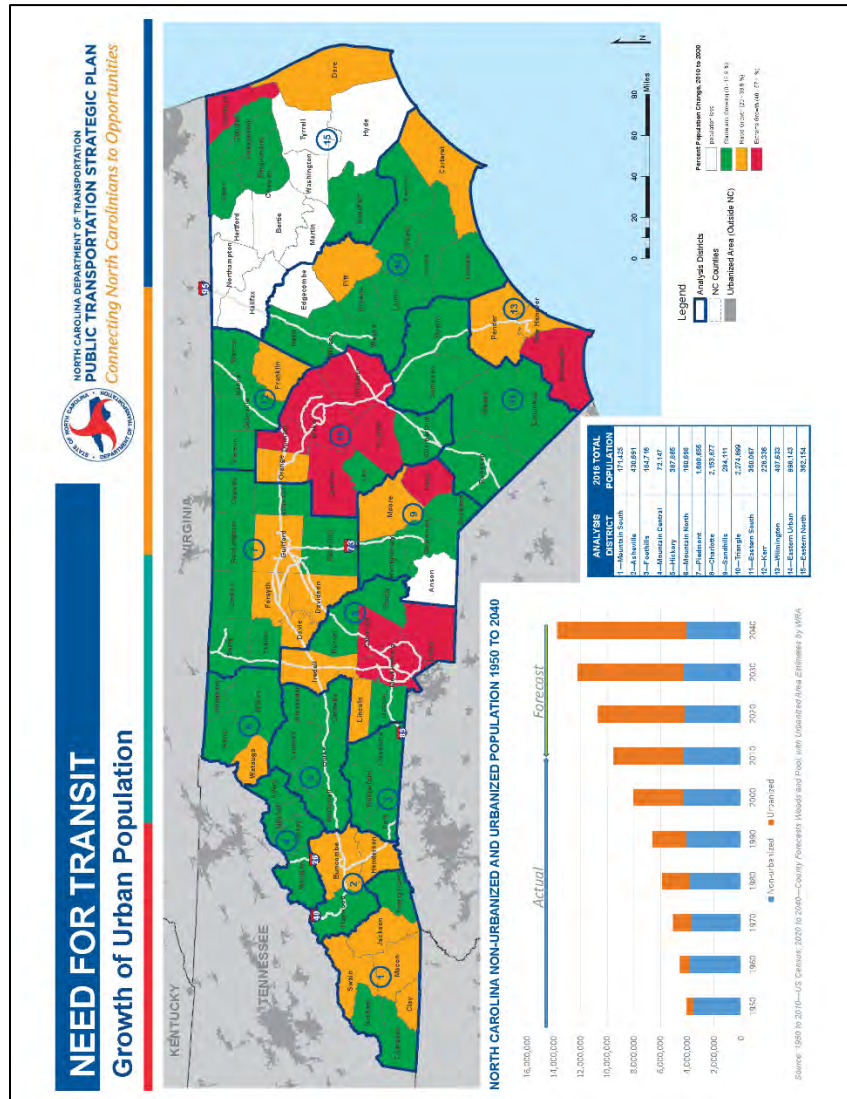




Figure A-18: continued

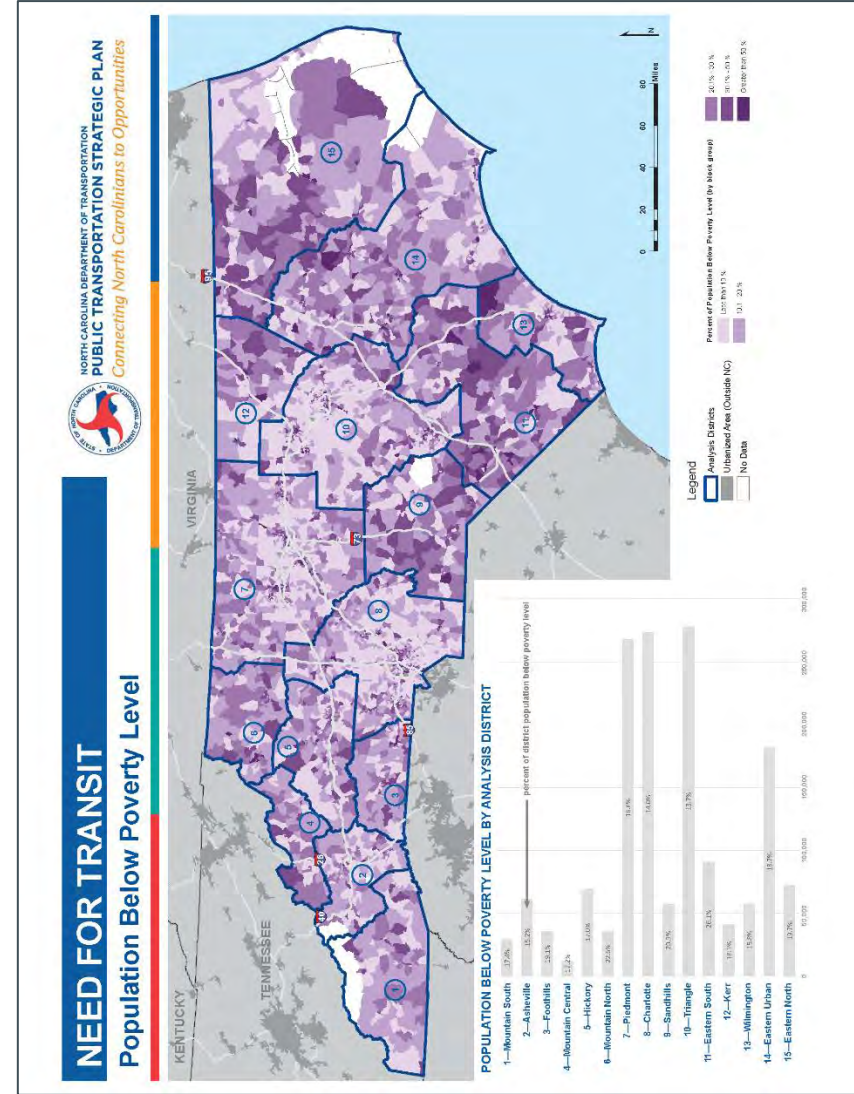
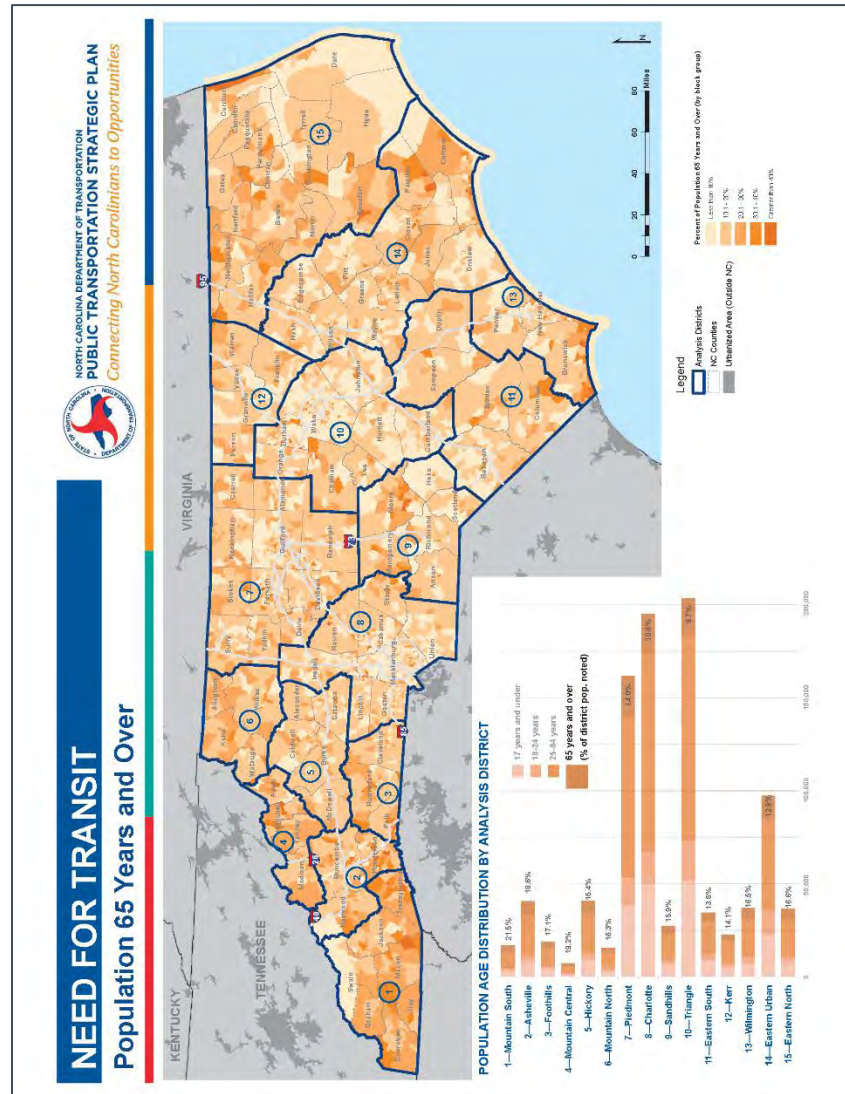




Figure A-18: continued

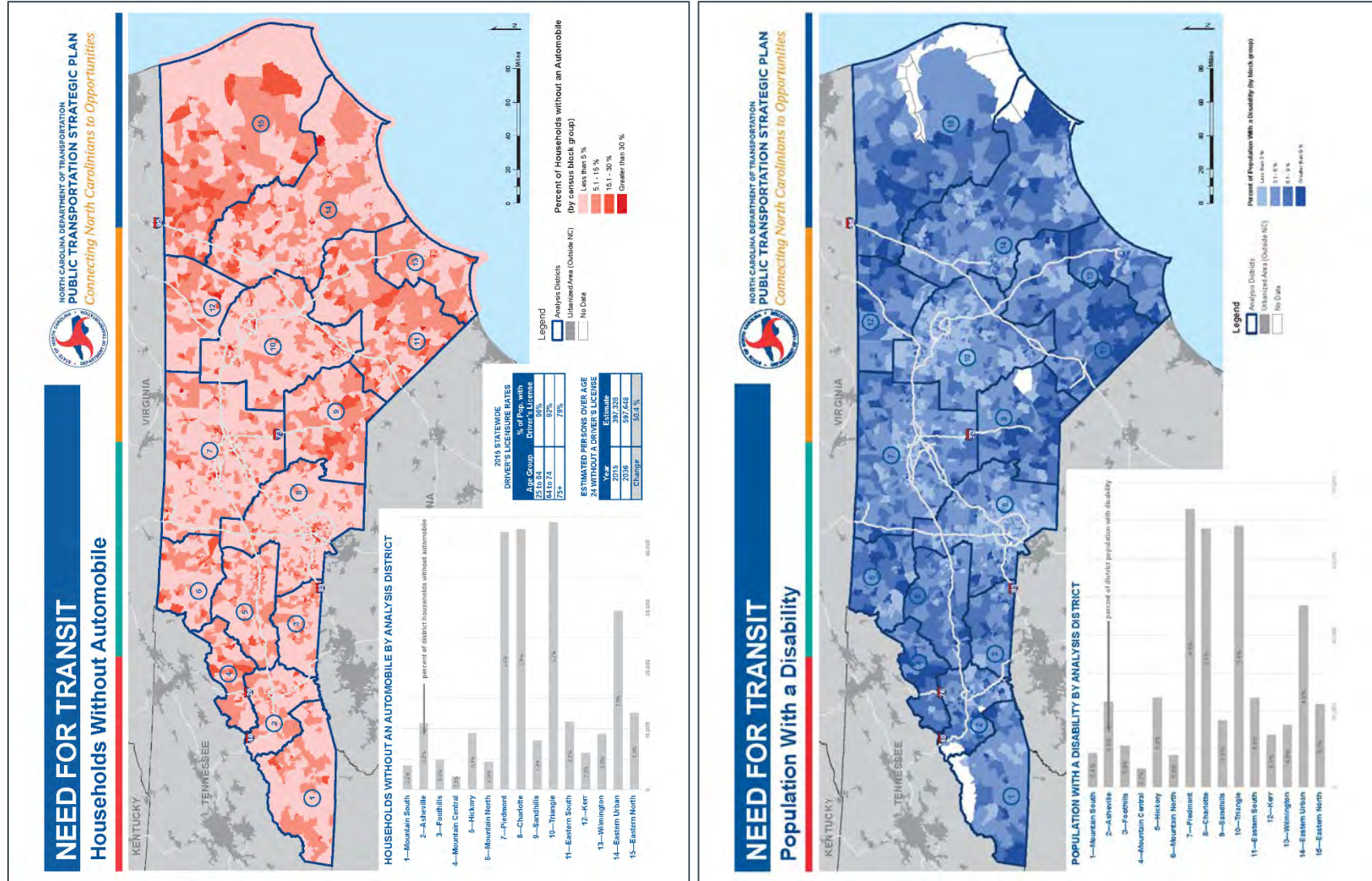
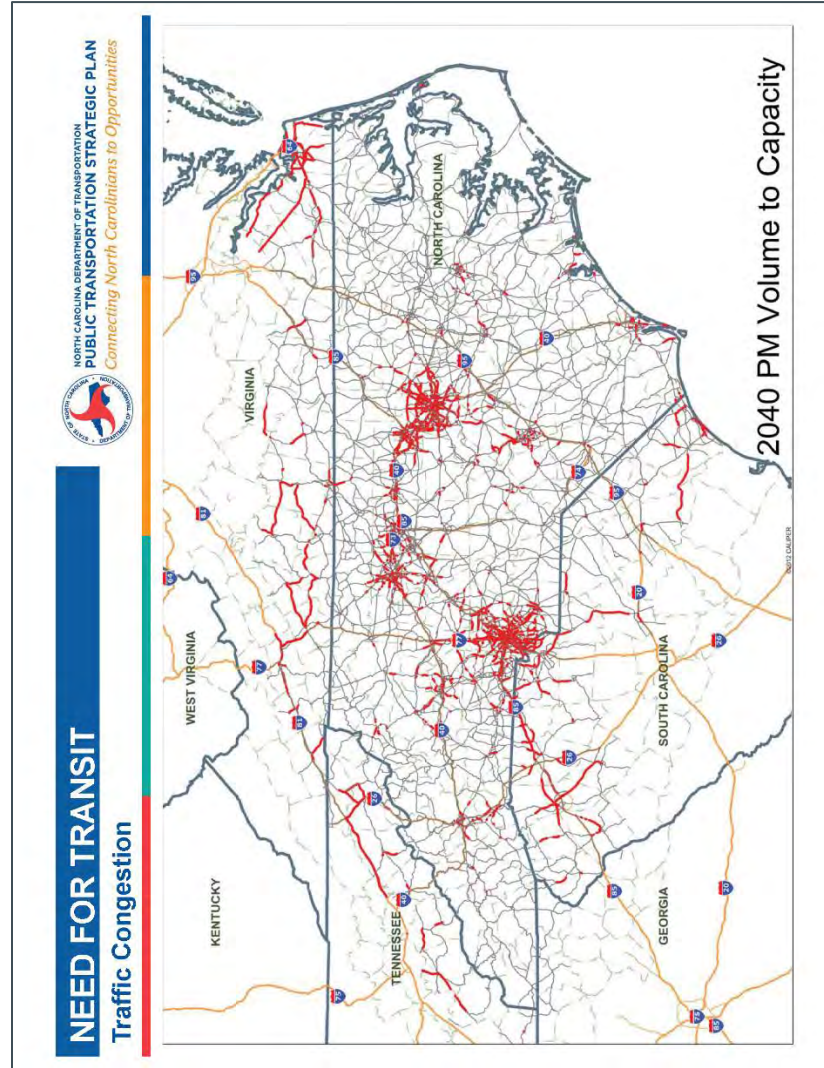




Figure A-18: continued



STRATEGIES
 Strategies for Statewide Mobility

Vision: *Connecting North Carolinians to Opportunities*

Missions:

- Statewide Seamless Frequent Transit Network
- Providing North Carolinians convenient access to employment, education, healthcare and recreation
- Improve the State's Quality of Life by:
 - Supporting economic development
 - Promoting healthy choices
 - Enabling independent living
 - Providing equality of access
- Increase Peak Period Capacity for Major Corridors

STRATEGIES

- Connected statewide network
- Support growth of existing systems and new local services
- Increase people capacity for congested corridors
- Statewide transit brand
- Promote state and local partnerships
- Employ emerging technologies
- Embrace transit supportive land use policies



Figure A-18: continued

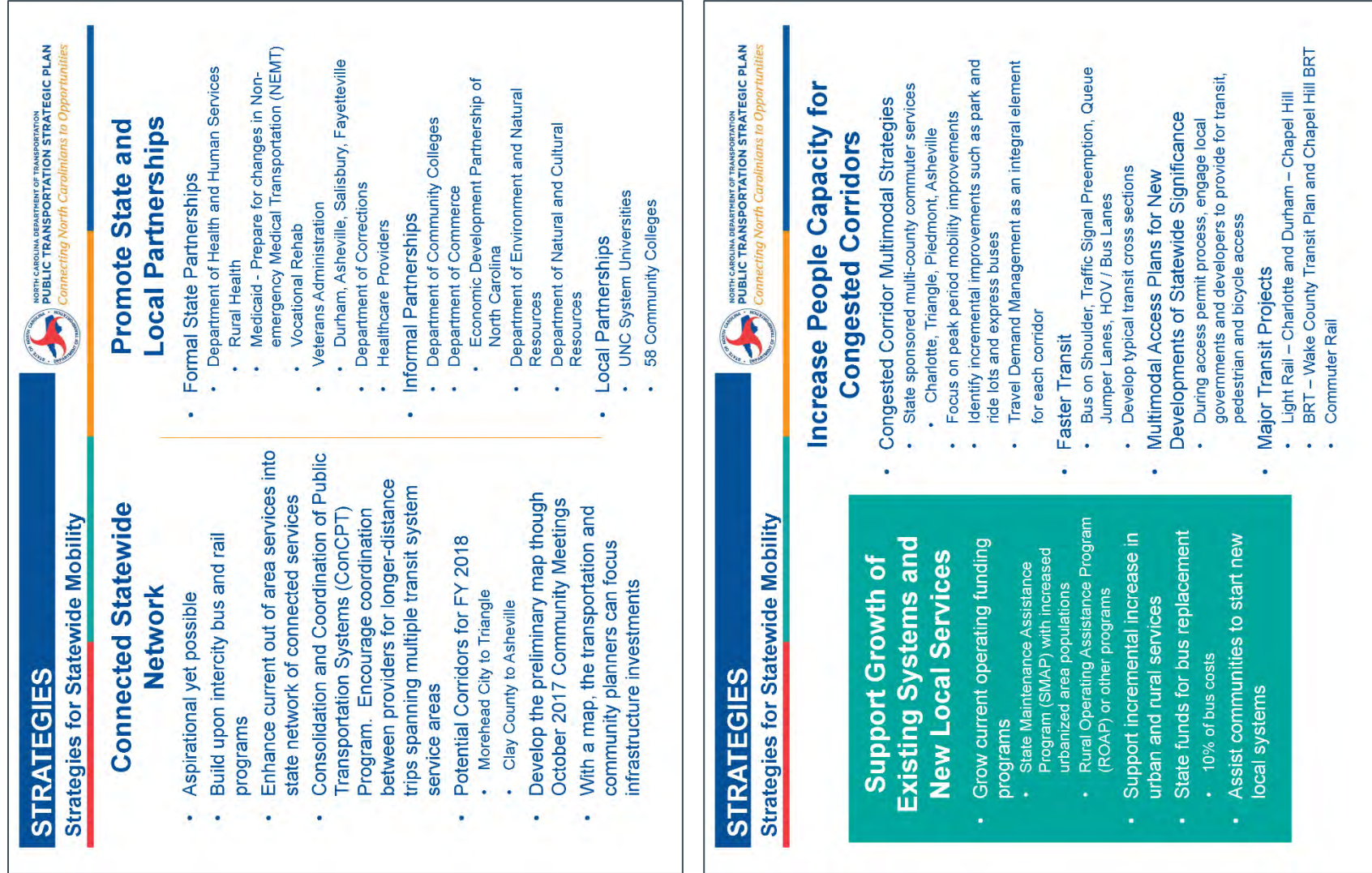




Figure A-18: continued





Figure A-18: continued

NETWORK PLANNING ACTIVITY

Concepts for Statewide Transit



Developing the Connected Statewide Network

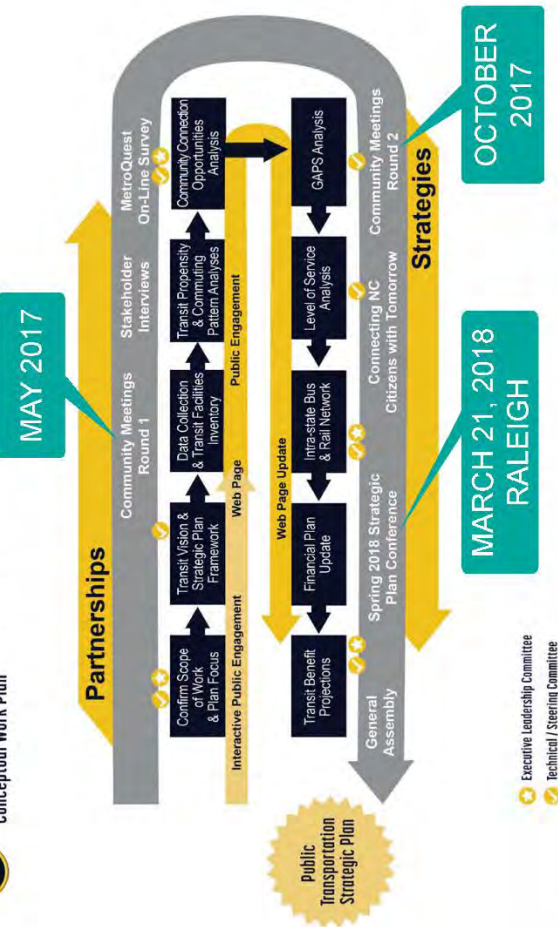
- Develop a statewide network map that transportation and community planners can use to focus infrastructure investments
- Build upon intercity bus and rail programs
- Enhance current out of area services into state network of connected services
- Connect community colleges, major healthcare and employment destinations
- Aspirational yet possible

DISCUSSION FORUM

Next Steps



Public Transportation Strategic Plan Conceptual Work Plan





NORTH CAROLINA DEPARTMENT OF TRANSPORTATION
PUBLIC TRANSPORTATION STRATEGIC PLAN
Connecting North Carolinians to Opportunities

Figure A-18: continued



PUBLIC TRANSPORTATION

STRATEGIC PLAN
Connecting North Carolinians to Opportunities



CONTACT US:

Debbie Collins, Director
Public Transportation Division
dgcollins1@ncdot.gov
(919) 707.4684

Jim Ritchey
WRA
jritchey@wrallp.com
(404) 433.1379

<https://www.ncdot.gov/nctransit/strategicplan>